

Peak Prog

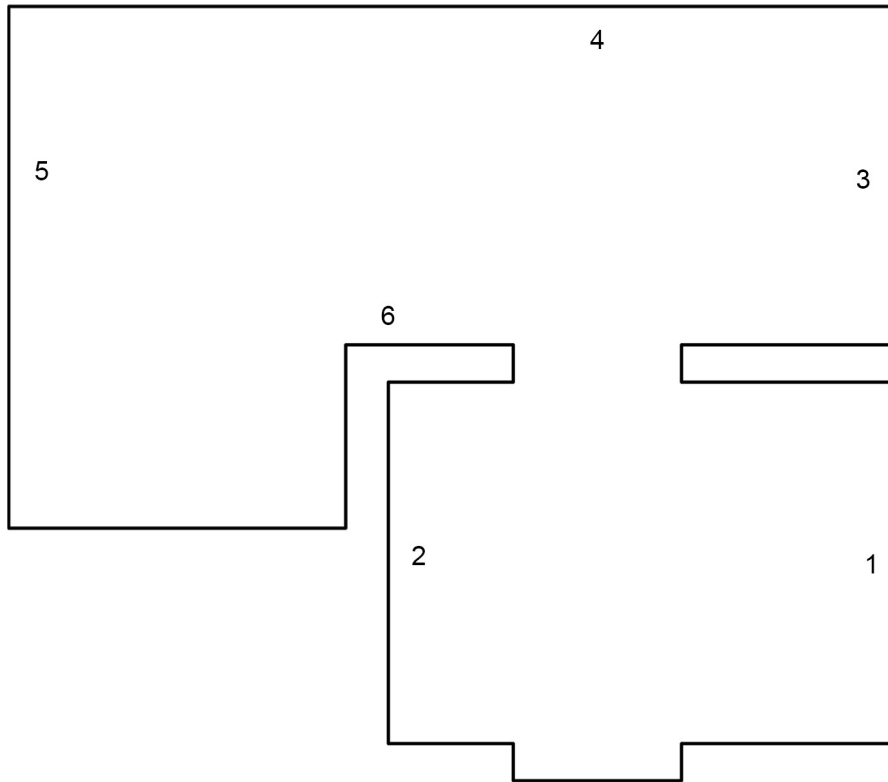
Jeff Zilm

12.09.2024 - 05.10.2024

Peak Prog, is an exhibition of recent paintings, presented without comment, at CHB-2, Berlin.

See Also: unmade painting in the style of Alex Hay, Magic Lantern Cycle 1966, AMOK Third Dispatch, Late-stage Low IQ Era Painting, Squat Theater, Zone, Anya Philips, Pat Hearn at MIT, Amon Düül II, The Contortions at Squat, Q for QUAD E for EQUINOX, John Held Jr., Too Many Last Exits, extreme and or slight horizontality, Zeitgeist Instant Amnesias, Schism GEN 3, *False Wall* (2024), frigid playgrounds, Honolulu Museum of Art, New York Correspondence School 1970, Cash Flagg, Op, *Inside Utter Capability*, 2010, Rosalind Krauss *On Frontality*, aaaaarg.fail RIP, Team Gallery 2000-2004, unmade painting in the style of Alex Hay, ink for marking cheese rind, 83% Christa 17% Biederbick-Tewes, *Keystrokes of the 1990s*, Five Mechanic Convention Streams, *Untitled (Herzmuster)*, 1965.

Jeff Zilm is an American artist living and working in Berlin.



1
Untitled
2024
Office, industrial,
and food marking inks on canvas
135 x 110 cm

2
Untitled
2024
Office, industrial,
and food marking inks on canvas
100 x 120 cm

3
Untitled
2024
Office, industrial,
and food marking inks on canvas
100 x 120 cm

4
Untitled
2024
Office, industrial,
and food marking inks on canvas
100 x 120 cm

5
Untitled
2024
Acrylic and office marking ink on
canvas
150 x 190 cm

6
Untitled (Anya Phillips Guest List)
2024
Embossed Dymo label tape
250 x 1 cm