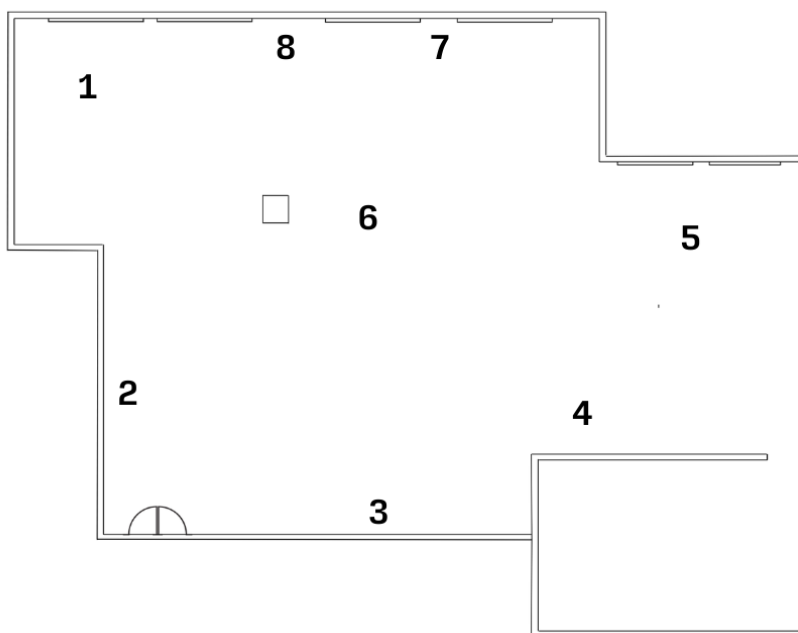


Three Sides Enclosed, the Fourth Open to a Wash of the Weather

September 13 - November 2, 2024

Tenant of Culture
 Jenine Marsh
 Amy Stober
 Bri Williams



1.
Amy Stober
When it Rains it Pours, 2024
 Cast Polyurethane, polyurethane pigments,
 umbrella, vinyl paint
 40 x 28 x 28 inches

2.
Amy Stober
Denim Friend, 2024
 Cast Polyurethane, polyurethane pigments,
 dry pigments
 9 x 14 x 4 inches

3.
Jenine Marsh
How To Fulfill a Wish (Bronze), 2023
 Cast bronze, coins, newspaper clippings,
 epoxy clay, powdered pigment, nails,
 acrylic varnish, polyethylene tarp,
 polymer based mortar, rigid foam
 68 x 68 x 14 inches

4.
Bri Williams
No Man's Land, 2024
 Soap, horse blinders
 17.5 x 8.5 6 inches

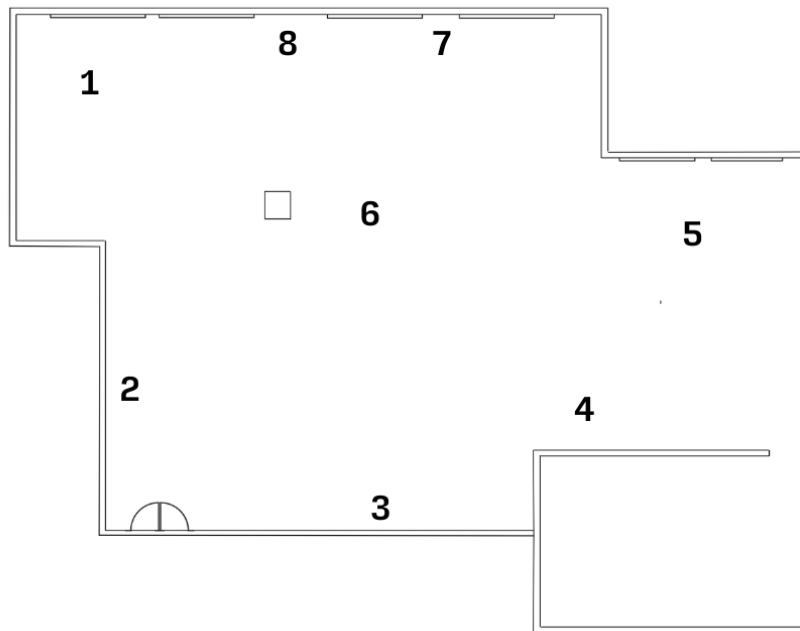
5.
Bri Williams
Medusa, 2024
 Carousel horse
 46 x 42 x 12 inches

6.
Tenant of Culture
Dry Fit (Series) Pink, 2022
 Recycled outerwear and sportswear,
 elastic, toggles, buckles, thread,
 fabric
 133 x 122 x 24 inches

Three Sides Enclosed, the Fourth Open to a Wash of the Weather

September 13 - November 2, 2024

Tenant of Culture
Jenine Marsh
Amy Stober
Bri Williams



7.

Jenine Marsh

Paradise is a Walled Garden (DYO), 2024

Flowers, synthetic rubber, acrylic UV
varnish, wire, plastic floral water tube,
coin, steel hardware

28 x 12 x 7 inches

71 x 30 x 17 cm

8.

Jenine Marsh

Paradise is a Walled Garden (Prototype), 2024

Flowers, ribbon, newspaper clippings,
synthetic
rubber, acrylic UV varnish, wire, plastic
floral

water tube, coin, steel hardware

39 x 9 x 4.5 inches

99 x 22 x 11 cm