

Stan Douglas: The Enemy of all Mankind
525 West 19th Street,
New York, NY 10011
September 12 - October 26, 2024

525 East Viewing Room:



Stan Douglas

Act I, Scene VIII: In which Mr. Ducat Argues to Mrs. Ducat that Polly has been Hired as Her Personal Maid while She Suspects Polly will be his Live-In Mistress, 2024

Inkjet print mounted on Dibond aluminum

48 1/4 x 84 1/4 inches

122.6 x 214 cm

Framed: 49 7/8 x 85 7/8 x 2 1/4 inches

126.7 x 218.1 x 5.7 cm

DOUST0574.1

525 Front Gallery:



Stan Douglas

Act III, Scene XII: In which Polly Reveals Herself to be a Woman Amid Discourse on Love with Pohetohee and Cawwawkee, 2024

Inkjet print mounted on Dibond aluminum

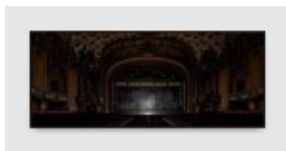
59 1/4 x 59 1/4 inches

150.5 x 150.5 cm

Framed: 60 3/4 x 60 3/4 x 2 1/4 inches

154.3 x 154.3 x 5.7 cm

DOUST0579.1



Stan Douglas

Ghostlight, 2024

Inkjet print mounted on Dibond aluminum

48 1/8 x 120 inches

122.2 x 304.8 cm

Framed: 49 5/8 x 121 7/8 x 2 1/4 inches

126 x 309.6 x 5.7 cm

DOUST0581.1



Stan Douglas

Africa Rock, 2024

Inkjet print mounted on Dibond aluminum

78 7/8 x 59 1/4 inches

200.3 x 150.5 cm

Framed: 80 3/8 x 60 3/4 x 2 1/4 inches

204.2 x 154.3 x 5.7 cm

DOUST0580.1



Stan Douglas

Act I, Scene XIV: In which Polly, with the Help of Damaris, Convinces Mrs. Ducat to Punish Her Husband by Granting Her Her Freedom, 2024

Inkjet print mounted on Dibond aluminum

59 1/4 x 59 1/4 inches

150.5 x 150.5 cm

Framed: 60 3/4 x 60 3/4 x 2 1/4 inches

154.3 x 154.3 x 5.7 cm

DOUST0576.1

525 Back Gallery:



Stan Douglas

Overture: In which Convicted Brigand Captain Macheath is Transported to the West Indies Where He will be Impressed into Indentured Labour, 2024

Inkjet print mounted on Dibond aluminum

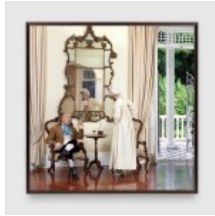
59 1/4 x 118 1/2 inches

150.5 x 301 cm

Framed: 60 7/8 x 119 7/8 x 2 1/4 inches

154.6 x 304.5 x 5.7 cm

DOUST0572.1



Stan Douglas

Act I, Scene XI: In which Polly Comes to Understand that Mrs. Trapes has Sold Her to Mr. Ducat as a Courtesan, 2024

Inkjet print mounted on Dibond aluminum

59 1/4 x 59 1/4 inches

150.5 x 150.5 cm

Framed: 60 3/4 x 60 3/4 x 2 1/4 inches

154.3 x 154.3 x 5.7 cm

DOUST0575.1



Stan Douglas

Act III, Scene VII: In which the pirate Morano (aka Captain Macheath) challenges, and is vanquished by, the Maroon Queen Pohotohee from the series, The Enemy of All Mankind: Nine Scenes from John Gay's Polly (1729), 2024

Inkjet print mounted on Dibond aluminum

59 1/4 x 118 1/2 inches

150.5 x 301 cm

Framed: 60 7/8 x 119 7/8 x 2 1/4 inches

154.6 x 304.5 x 5.7 cm

DOUST0570.2



Stan Douglas

Act II, Scene VI: In which the Wife of Pirate Captain Morano, Jenny Diver, Attempts to Seduce Polly, who is Disguised as a Man to Avoid Molestation, 2024

Inkjet print mounted on Dibond aluminum

59 1/4 x 59 1/4 inches

150.5 x 150.5 cm

Framed: 60 3/4 x 60 3/4 x 2 1/4 inches

154.3 x 154.3 x 5.7 cm

DOUST0577.1



Stan Douglas

Act II, Scene XII: In which Polly Convinces Pirates Laguerre and Capstern to Release their Captive, Prince Cawwawkee, for a Prize Rather than go to War Against His People with Morano, 2024

Inkjet print mounted on Dibond aluminum

59 1/4 x 78 7/8 inches

150.5 x 200.3 cm

Framed: 61 x 80 1/2 x 2 1/4 inches

154.9 x 204.5 x 5.7 cm

DOUST0578.1



Stan Douglas

Act I, Scene V: In which Polly Peachum is Greeted at the Ducat Estate by Family Friend Diana Trapes, who will Ultimately Betray Her, 2024

Inkjet print mounted on Dibond aluminum

59 1/4 x 59 1/4 inches

150.5 x 150.5 cm

Framed: 60 3/4 x 60 3/4 x 2 1/4 inches

152.4 x 154.3 x 5.7 cm

DOUST0573.1