

White Columns

CR[Ⓐ]SS OVER

Gee Vaucher: Crass & Beyond

September 12 - October 26, 2024

West Gallery:



Your Country Needs You, 1978

Original offset print from 1978

32 1/2 x 24 in.



Feeding of the 5000, 1978

Gouache

10 1/4 x 10 1/4 in.



Reality Asylum, 1979

Gouache and collage

11 3/4 x 9 1/2



Bloody Revolutions, 1980

Gouache

11 1/2 x 17 in.



Nagasaki Nightmare, 1980

Gouache and collage

8 1/4 x 11 3/4 in.



Stations of the Cross, 1979
Gouache and collage
22 3/4 x 32 1/4 in.



Penis Envy, 1981
Collage, ink and gouache
11 1/2 x 8 1/4 in.



Penis Envy, 1981
Collage, ink, gouache
15 x 19 1/2 in.



Irish Stew, 1981
Collage
15 x 11 in.



Pope and Queen, 1981
Gouache
14 x 11 3/4 in.



Thatcher CusTurd, 1982
Collage
11 3/4 x 11 3/4 in.



Still Life with Nude, 1983
Collage
11 1/2 x 8 1/4 in.



Welcome Home, 1982
Collage
13 1/4 x 9 1/2 in.



Hunger, 1983
Gouache
8 1/2 x 4 1/2 in.



Ideal Home, 1983
Collage
12 1/4 x 16 in.



Poor but Loyal, 1982
Collage
7 3/4 x 6 in.



The Spoils of War, 1983
Gouache
3 1/4 x 6 3/4 in.



Christ the Album, 1981
Gouache and collage
17 3/4 x 24 3/4 in.



Yes Sir I Will, 1982
Collage
12 1/2 x 9 3/4 in.



You're Already Dead, 1984
Gouache
12 1/2 x 7 3/4 in.



Best Before 1984, 1989
Color photographic print with
collage and hand-coloring
11 1/2 x 17 3/4 in.



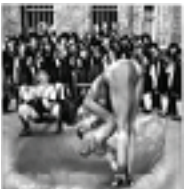
Best Before 1984, 1989
Gouache
8 1/2 x 8 1/4 in.



Family, 1977
Collage
16 1/2 x 11 1/2 in.



Education, 1977
Gouache
9 1/2 x 9 1/2 in.



Education, 1977
Gouache
8 1/4 x 7 3/4 in.



Smile, 1979
Collage
13 1/4 x 10 1/2 in.



Domestic Violence, 1979
Collage
22 x 14 1/2 in.



Domestic Violence, 1979
Gouache
11 3/4 x 11 1/2 in.



Domestic Violence, 1979
Collage
11 3/4 x 9 1/2



Pacify, 1982
Xerox print
13 x 11 in.



Meat with Everything, 1982
Collage
11 1/4 x 8 1/4 in.

1977/78	1978/79	1980	1981	1982
---------	---------	------	------	------

1982	1983
------	------

1983/ 84	1984
-------------	------

1984	Various Dates
------	------------------

1984	Various Dates
------	------------------

**On the walls (above framed work):
Facsimiles of Crass flyers, posters and printed ephemera.**

Lobby:



Cobblestones, 2014
16 black and white photographs
14 x 21 in. each



Crass Banner, c. 1983
Paint on bedsheet
69 x 89 in.

Window Bays:



Beethoven, 2004
Stone
10 1/2 x 7 x 5 in.

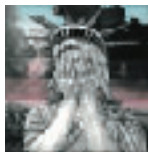


Wagner, 2004
Stone
5 1/2 x 3 1/2 x 3 in.



Bach, 2004
Stone
5 1/2 x 3 x 2 1/2 in.

East Gallery:



Oh, America, 1989
Gouache
9 1/2 x 9 1/2 in.



Pieta, 2010/2019
Digital print
27 x 25 in.



Welcome to Palestine, 2008
Digital print
27 x 25 in.



Knots, 2011-2020
27 collages
13 x 8 1/4 in. each

Vitrines:

A Week of Knots, 2011-2020
Pages from a series of publications
Dimensions variable



Great Scott, 2008
Digital print
29 1/2 x 35 1/2 in.



Flying High, 2008
Digital print
30 x 35 1/2 in.



MickeyAngelo, n.d.
Digital print
20 1/2 x 35 1/2 in.



All at Sea, c. 2021
Digital print
19 1/2 x 35 1/2 in.



Gee Vaucher / Penny Rimbaud
Oh, America (with text), 2006
Digital print
35 1/2 x 34 1/2 in.



Three Peace Suite, n.d.
Digital print
36 1/2 x 29 1/2 in.



Our Father, 2007
Digital print
43 1/2 x 30 1/2 in.



Welcome to Palestine, 2008
Digital print
35 1/2 x 24 1/4 in.



Onward Christian Soldier, 2008
Digital print
35 1/2 x 28 3/4



Lost: A Modern Bible, 2018
Book
12 1/2 x 9 1/2 in.



Children Who Have Seen Too Much Too Soon, c. 2006
Oil paint, acrylic, oil pastels on canvas
85 1/2 x 73 1/2 in.



Children Who Have Seen Too Much Too Soon, c. 2006
Oil paint, acrylic, oil pastels on canvas
85 1/2 x 76 1/2 in.



Children Who Have Seen Too Much Too Soon, c. 2006
Oil paint, acrylic, oil pastels on canvas
89 x 76 in.



Children Who Have Seen Too Much Too Soon, c. 2006
Oil paint, acrylic, oil pastels on canvas
85 1/2 x 67 in.



Children Who Have Seen Too Much Too Soon, 2024
Oil paint, acrylic, oil pastels on canvas
67 x 90 in.



The Great Contender, n.d.
Oil paint on canvas
72 x 96 in.



The Great Contender, 1997
Oil paint on canvas
72 x 96 in.



Much Ado About Something, 1996
Drawing and collage
14 framed drawings with collage,
22 x 18 in. each



Homage to Catatonia (1), 1975
Gouache
14 x 11 1/2 in.



Homage to Catatonia (2), 1975
Gouache
14 x 11 1/2 in.



Homage to Catatonia (3), 1975
Gouache
14 x 11 1/2 in.