

Emelie Luostarinen - fatto a mano

24.08 – 03.11.2024

The exhibition inside the gallery, the gallery inside the apartment, the liminal notion of the interior of a kitchen in the making, or whatever it could mean to you.

Mega Foundation is thrilled to present Emelie Luostarinen's first solo presentation, *fatto a mano*, in Stockholm. The kitchen elements, which at first glance resemble light-flecked, highly sought-after Carrara marble, are in reality, *fatto a mano*—a marbling technique, a testament to manual labor, and thus to be treated as the paintings they truly are. The exhibition follows Luostarinen's long-standing practice of treating all of her materials and objects as paintings, with the painting remaining the primary focus, despite the different object's inherent identity. Instead of presenting it as ready-mades, Luostarinen emphasizes on the brushstroke, and the time it took to make them, permitting all the details and irregularities to shine through. And to walk over the entrance under the portal at the door, into something else, she invites us to sit in energy of the in between—the void spaces that are often overlooked, yet are essential in shaping how we perceive the world and to be present within our bodies, Luostarinen's practice seeks to examine the relationship between embodiments, feelings and their interaction with its immediate surroundings.

Emelie Luostarinen's exhibition marks the beginning of three separate exhibition projects at Mega Foundation under the curatorial vision of public/private that invites you to reflect on the intrinsic meaning of a home and the accessibility to the outer and inner spheres that you come across in the life that you are destined to live from one day to the next.

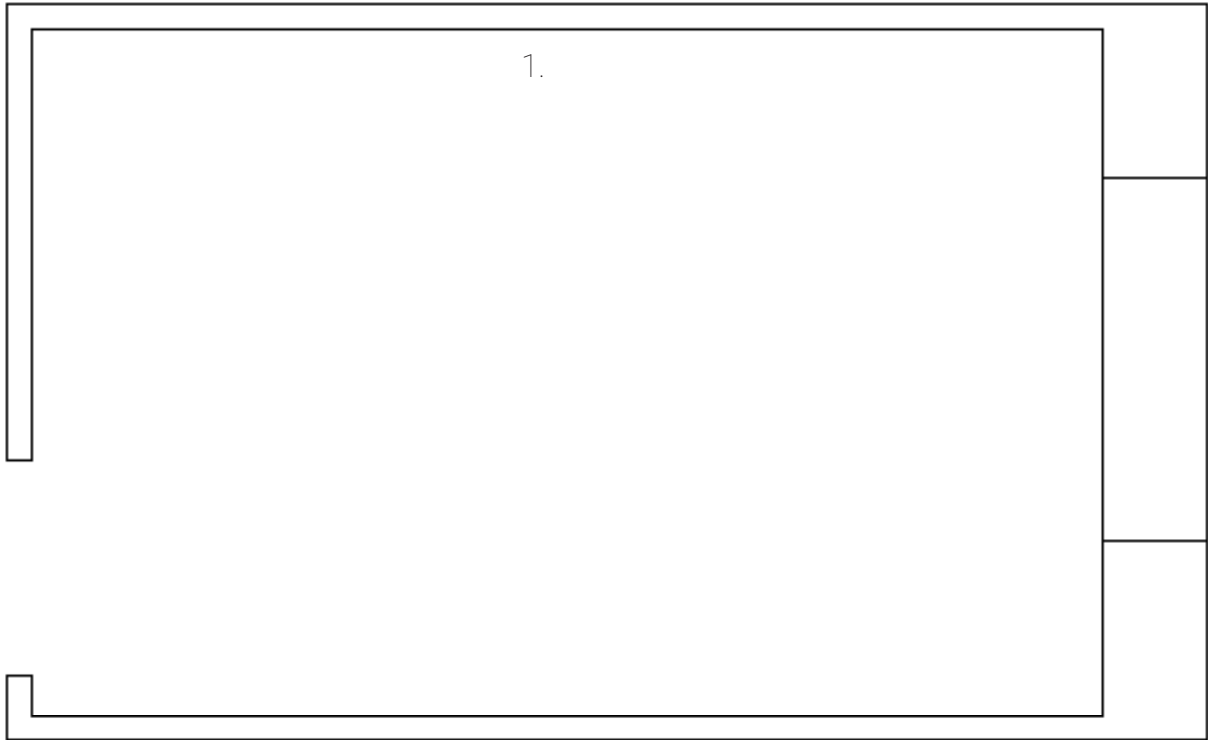
Maria Elena Guerra Aredal

Emelie Luostarinen (b. 1987, Stockholm) is a visual artist working between Helsinki and Stockholm. Her artistic practice includes painting and sculpture. The works are often autobiographical with a traceable narrative. Most recently, her work has been shown at gallery re.riddle and gallery Climate Control in San Francisco, gallery TM and Sinne in Helsinki and gallery Low in Riga. She holds a master's degree in visual arts from the Academy of Fine Arts in Helsinki (2020). In addition to her individual work, she participates in the artist duo P.I.L.E.

MEGA Foundation is a Stockholm-based independent gallery space, founded in 2015 by independent curator Maria Elena Guerra Aredal, exhibiting new contemporary work. The physical space in which it was originally situated had two simultaneous functions: a production facility for a fire-fighting system and an art space, thus giving the space its unique and experimental characteristics. Between 2018-2020, MEGA joined forces with yek (curator Asrin Haidari) to open a new contemporary art space, Tegel. The venue was shared between the two and they produced both joint and individual exhibitions and projects.

Today the gallery is working from the intimate sphere of the private apartment.

M



1. fatto a mano (1- 16), 2024
Masonite, styrofoam, putty, acrylic, ink

Glove - organza, sewing thread, beeswax,
black pigment

Variable dimensions

G

With support from The Swedish Cultural Foundation in Finland

