

# ***ETERNAL MACHINE***

a complex clock associating all the times

Disappearance is a process, Time's Mistress.

There are no rules or deadlines.

Eternal machine! You remain stable, but sometimes you fall.

Collapse is perpetuated by the persistence of certain states between flows and fluxes, winds and liquids.

A decision that you are forced to make is not a decision.

Balanced level-headedness.

Global stability of flowing movements.

Matter is swinging.

The less you move, the less the invariant is swept away.

Some people already see the flames.

Others don't even smell the smoke.

Life on Earth is evil.

I did love you once.

It is stable? Yes.

It is unstable? Yes, again.

Unstable? Yes, again.

The more you move, the more the fall prevails over equilibrium.

1. Iza Tarasewicz  
*Eternal machine (work hours) /Eternal machine (leisure time)*, 2024  
 galvanized steel  
 ø 360 cm

2. Iza Tarasewicz  
*Społem I*, 2024  
 oxidized steel  
 66 x 43 cm

3. Iza Tarasewicz  
*Future. Fraud. Frenzy.*, 2024  
 hemp fiber dyed with cochineal, aloe, and indigo natural dyes, galvanized steel frame  
 63.5 x 91 cm

4. Iza Tarasewicz  
*A long-forgotten ritual*, 2024  
 variable dimensions  
 stainless steel, patina

5. Iza Tarasewicz  
*Społem III*, 2024  
 oxidized steel  
 43 x 50 cm

6. Iza Tarasewicz  
*Life on Earth is evil. I did love you once.*, 2024  
 hemp fiber dyed with indigo and turmeric natural dye, galvanized steel frame  
 32 x 22.5 cm

7. Iza Tarasewicz  
*Some people already see the flames. Others don't even smell the smoke.*, 2024  
 hemp fiber dyed with cochineal natural dyes, galvanized steel frame  
 23 x 31.5 cm

8. Iza Tarasewicz  
*Collapse is perpetuated by the persistence of certain states between flows and fluxes, winds and liquids*, 2024  
 hemp fiber dyed with walnut and madder root natural dyes, galvanized steel frame  
 32 x 22.5 cm

9. Iza Tarasewicz  
*It is stable? Yes. It is unstable? Yes, again. Unstable? Yes, again.*, 2024  
 hemp fiber dyed with indigo and turmeric natural dyes, galvanized steel frame  
 32 x 22.5 cm

10. Iza Tarasewicz  
*It remains stable, but sometimes you fall*, 2024  
 hemp fiber dyed with cochineal and aloe natural dyes, galvanized steel frame  
 32 x 22.5 cm

11. Iza Tarasewicz  
*Disappearance is a process*, 2024  
 hemp fiber dyed with walnut natural dyes, galvanized steel frame  
 23 x 31.5 cm

In the garden:  
 Iza Tarasewicz  
*Time's Mistress*, 2024  
 oxidized steel  
 68 x 140 x 80 cm

*Huk*  
 Paweł Sakowicz

Saturday, September 28, 4 pm  
 Sunday, September 29, 4 pm  
 Tuesday, November 5, 5 pm

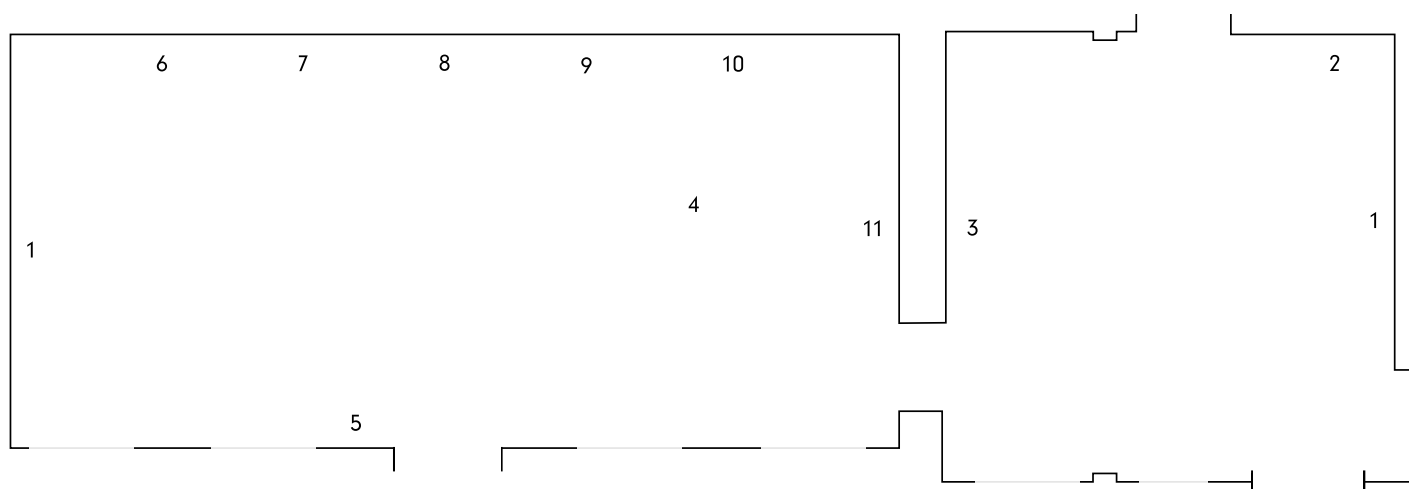
Choreography:  
 Paweł Sakowicz

Performers:  
 Karolina Kraczkowska, Agnieszka Kryst,  
 Katarzyna Sikora

Sound:  
 Gediminas Rimeika

Referencing the forms and rhythm of Iza Tarasewicz's works, the performance evokes the contemporary language of the mazurka and its traditional cyclical movements. *Huk* explores irregularity through the use of voice and footwork, resembling machines spiraling out of control. Originally created for Iza Tarasewicz's *The Rumble of a Tireless Land* exhibition at Tramway Glasgow in 2022, this new adaptation will be presented for the first time during Warsaw Gallery Weekend 2024. *Huk* (2024) is an adaptation composed specifically for Iza Tarasewicz's *Eternal Machine* exhibition as part of WGW 2024 and for the new space and garden of Gunia Nowik Gallery.

Paweł Sakowicz's performance *Huk* is supported by The ING Polish Art Foundation.



Special thanks to Syrena Real Estate and HOP Chmielna for supporting the exhibition.

^  
 entrance