

Tomas Leth  
Spoorless Analogues

24 October 24 – 23 November 24

ADZ Gallery  
Rua do Crucifixo, n.º 28, 1.º  
Lisboa 1100-183  
Portugal

Z

D

A

If I should die before I wake,  
All my bone and sinew take  
Put me in the compost pile  
To decompose me for a while  
Worms, water, sun, will have their way,  
Returning me to common clay  
All that I am will feed the trees  
And little fishies in the seas.  
When radishes and corn you munch,  
You may be having me for lunch  
And then excrete me with a grin,  
Chortling, "There goes Lee again."  
Twill be my happiest destiny  
To die and live eternally.

— Lee Hays

Tomas Leth  
Born 1981 in Denmark  
Lives and works in Copenhagen

Danish artist Tomas Leth's works combine delicacy and earthiness, surface and psychology. Working primarily in oil pastels, his pieces are replete with earthy reds, royal blues, and vermillion yellows. His wrought drawings use petal-like mark making to create dappled and evocative, non-objective tableau.

Speaking about his work, he describes his process as lengthy and intuitive - working on motifs in layers over several months until he finds a clear image which balances chaos and surprise in equal measures. Much like rust oxidising, or spores germinating, Leth's work retains a sense of movement and organic patterning: blooming, mutable, and intricately etched, they read as biologically informed, taking on a prehistoric grandeur. Present too is an emphasis on texture, tactility, and an oscillation between depth and surface, informed by the artist's time working with sculpture.

Quietly philosophical, at the heart of Leth's work is a faith in alternate ways of seeing, and a quiet cynicism about effects of a contemporary image economy on the psyche. His canvases are bound with a desire to explore a mind-body dualism, and seek more authentic, anti-pictorial ways of encountering the world. Much like the metaphysical poets, and later, the post structuralist philosophers, Leth is particularly interested in the ways we encounter, negotiate, and perceive reality, taking renewed interest in mediaeval and mystical ways of seeing over contemporary, modern vision. His work is the result of an active and ongoing project that seeks to 'tear holes' in perception, taking advantage of gaps, slippages and flux to make room for the unknown. He feels his way towards motifs that renegotiate space.

The artist gains imaginative inspiration from the Impressionists, and in particular the impressionist 'eye': their interest in the passage of time, their mutable canvases, and their fondness for soft, radiant lightscapes. Shoring darkness and rejuvenation against one another, Leth's works create sublime, intricate, nebulous drawings.

Tomas Leth  
Born 1981 in Denmark  
Lives and works in Copenhagen

Education:

2021 Royal Danish Art Academy, Copenhagen, Denmark

Solo Exhibitions

2024 Spoorless Analogues, ADZ, Lisbon, Portugal  
2023 'The Suns of Half Sleep', Matthew Brown, Los Angeles, USA  
Ekstatisk pollen, Paulina Caspari, Munich, Germany  
2022 Orfila, ADZ, Lisbon, Portugal

Group Exhibitions

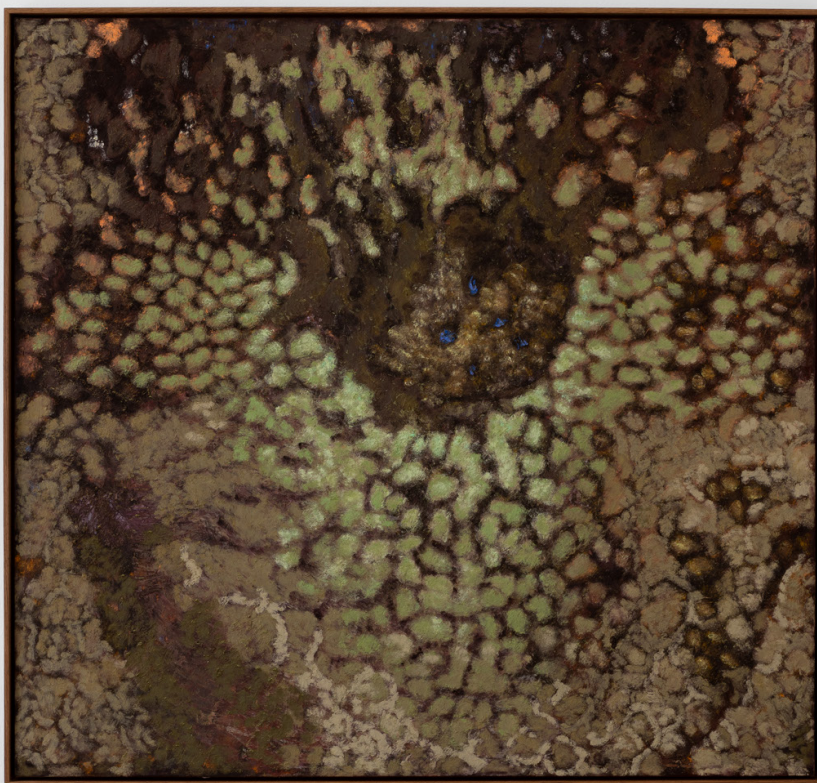
2024 Bernheim X ADZ, Zurich  
2023 'In the Shadow', White Cube  
'Doll-Soul', ADZ gallery, Lisbon, Portugal  
2021 Fragments, ADZ, Lisbon, Portugal  
Degree Show, The Royal Academy of Fine Arts, Copenhagen, Denmark  
2020 Galleri Tom Christoffersen, Copenhagen, Denmark  
2019 Arcways Nightland Connector, Copenhagen, Denmark  
2018 Galleri Tom Christoffersen, Copenhagen, Denmark

Art Fairs

2024 Art Brussels, ADZ (Brussels, Belgium)  
Frieze London, Croy Nielsen (London, UK)







Tomas Leth  
Possession Key / Ancient Bloodstreams, 2024  
oil and pastel on canvas  
122 x 129 cm  
(ADZTL049)







Tomas Leth  
Possession Key / Ancient Bloodstreams, 2024  
oil and pastel on canvas  
122 x 129 cm  
(ADZTL049)



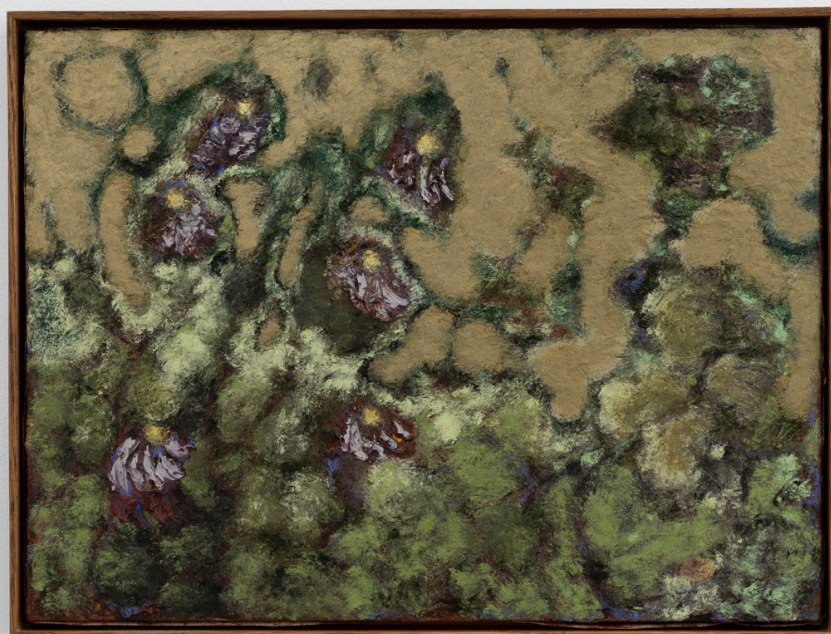






Tomas Leth  
Bog Child, 2024  
oil and pastel on canvas  
118 x 148 cm  
(ADZTL052)

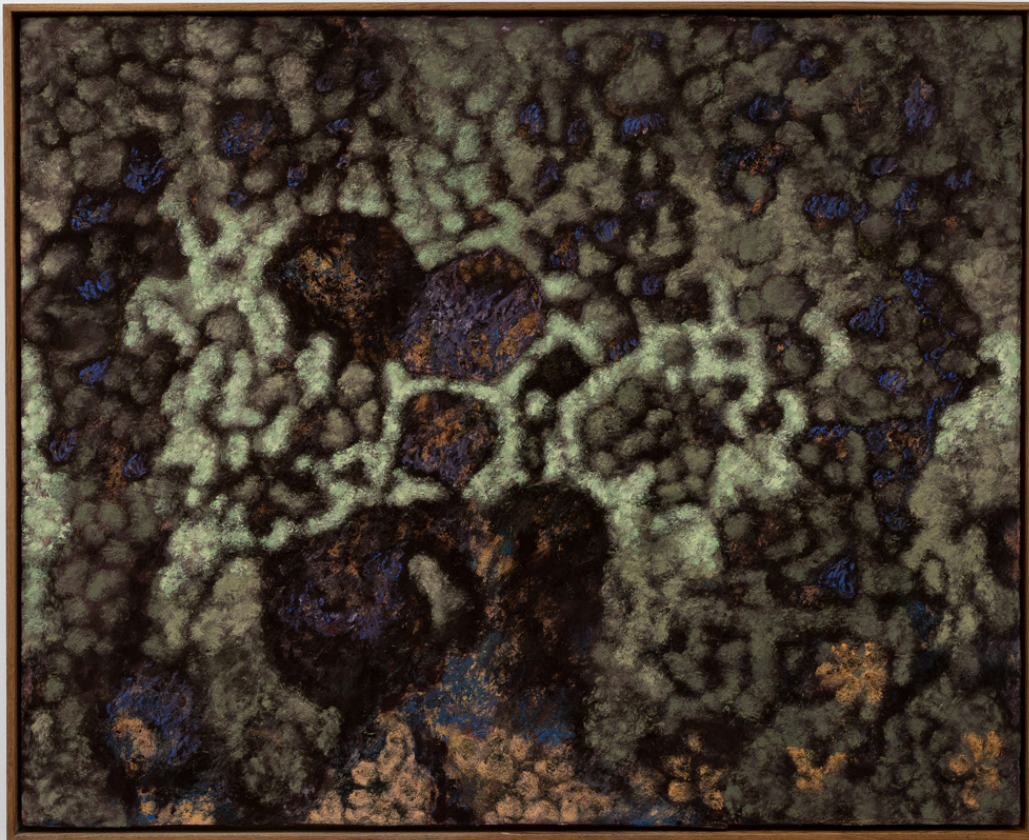




Tomas Leth  
Untitled, 2024  
oil and pastel on canvas  
35 x 47cm  
(ADZTL055)



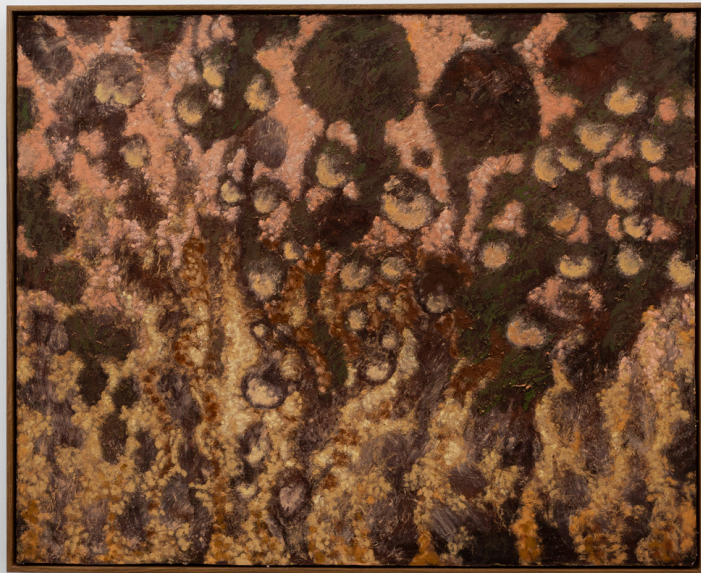




Tomas Leth  
Those are pearls that were his eyes, 2024  
oil and pastel on canvas  
90 x 111cm  
(ADZTL060)







Tomas Leth  
Hymn, 2024  
oil and pastel on canvas  
90 x 111,5 cm  
(ADZTL053)

Z

D

A