

Exhibition checklist

THE WORD TODAY SERVES NO ONE EXCEPT TO SAY TO THE GROCER GIVE ME A POUND OF LENTILS, Supportico Lopez, Berlin, November 14 - December 20, 2014



Charlie Billingham
Bonnet 9, 2014
Oil and acrylic on linen
100 x 80 cm (39 3/8 x 31 1/2 inches)



Charlie Billingham
Eau de Vie, 2014
oil and acrylic on linen
100 x 80 cm (39 3/8 x 31 1/2 inches)



Charlie Billingham
Guests, 2014
Oil and acrylic on Linen
100 x 80 cm (39 3/8 x 31 1/2 inches)



Michael Dean
LB (Working Title), 2014
Concrete on unprimed linen
170 x 150 cm (66 7/8 x 59 inches)



Kim Fisher
Aluminum #10 (Vertical Tear), 2014
Aluminum on dyed linen
95.5 x 96.5 x 4.5 cm (37 5/8 x 38 x 1 3/4 inches)



Kim Fisher

Magazine Painting (Faded Coral Pink), 2014
Oil on dyed linen
96.5 x 96.5 x 4.5 cm (38 x 38 x 1 3/4 inches)



Kim Fisher

Magazine Painting (Night Ocean), 2014
Oil on dyed linen
96.5 x 96.5 x 4.5 cm (38 x 38 x 1 3/4 inches)



Channing Hansen

CMBR, 2013
Hand-spun and dyed Corriedale, Romney, Cheviot, Cedar
37.5 x 43 x 3 cm (14 3/4 x 16 7/8 x 1 1/8 inches)



Channing Hansen

Untitled (Grid Horizon), 2014
Hand-spun ecru Coopworth, ecru Blue Faced Leicester, Cedar
42 x 49 x 3 cm (16 1/2 x 19 1/4 x 1 1/8 inches)



James Hoff

Milking the flat cow, 2012
Oil on canvas
76 x 101 cm (29 7/8 x 39 3/4 inches)



Tom Humphreys

Untitled, 2014

Gouache and on paper mounted on canvas
230 x 150 cm (90 1/2 x 59 inches)



Natalie Häusler

like a jellyfish within architecture, 2011

Pigment print on aludibond, wood, lacquer, metal brackets
Hand rail: 15 x 610 x 220 cm (5 7/8 x 240 1/8 x 86 5/8 inches)
3 Prints, each: 116 x 80 cm (45 5/8 x 31 1/2 inches)



David Korty

Blue Shelf #25, 2014

vinyl paint, paper, pencil and ink on canvas
183 x 137 x 4 cm (72 x 53 7/8 x 1 5/8 inches)



Matthew Lutz-Kinoy

Mussel plates: snail arena, 2014

Glazed vitrified ceramic
10 x 37 x 37 cm (3 7/8 x 14 5/8 x 14 5/8 inches)
Edition of an edition of 1



Matthew Lutz-Kinoy

Mussel plates: snail arena, 2014

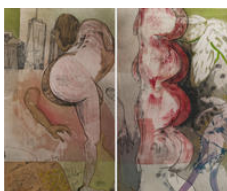
Glazed vitrified ceramic
10 x 37 x 37 cm (3 7/8 x 14 5/8 x 14 5/8 inches)



Matthew Lutz-Kinoy

Mussel plates: snail arena, 2014

Glazed vitrified ceramic
10 x 37 x 37 cm (3 7/8 x 14 5/8 x 14 5/8 inches)



Matthew Lutz-Kinoy

New York mirror shows, whats a body for?, 2014
dyptych

acrylic and charcoal on unprimed canvas
each canvas: 233 x 140 cm (91 3/4 x 55 1/8 inches)



Sophie Reinhold

Axis, 2014

Graphite, marble dust on canvas, 50 x 40 cm



Shozo Shimamoto

Untitled, 1952

Japanese black ink on paper

25.7 x 36.1 cm (10 1/8 x 14 1/4 inches)



Shozo Shimamoto

Untitled, 1952

pencil on paper

12.3 x 12.7 cm (4 7/8 x 5 inches)



Zin Taylor

Alphabet City, 2013

MDF, Paint, Ink

200 x 800 cm (78 3/4 x 315 inches)



Douglas Gordon

un kilo de lentilles, 2014

stainless steel and silver spray

100 x 100 cm (39 3/8 x 39 3/8 inches)