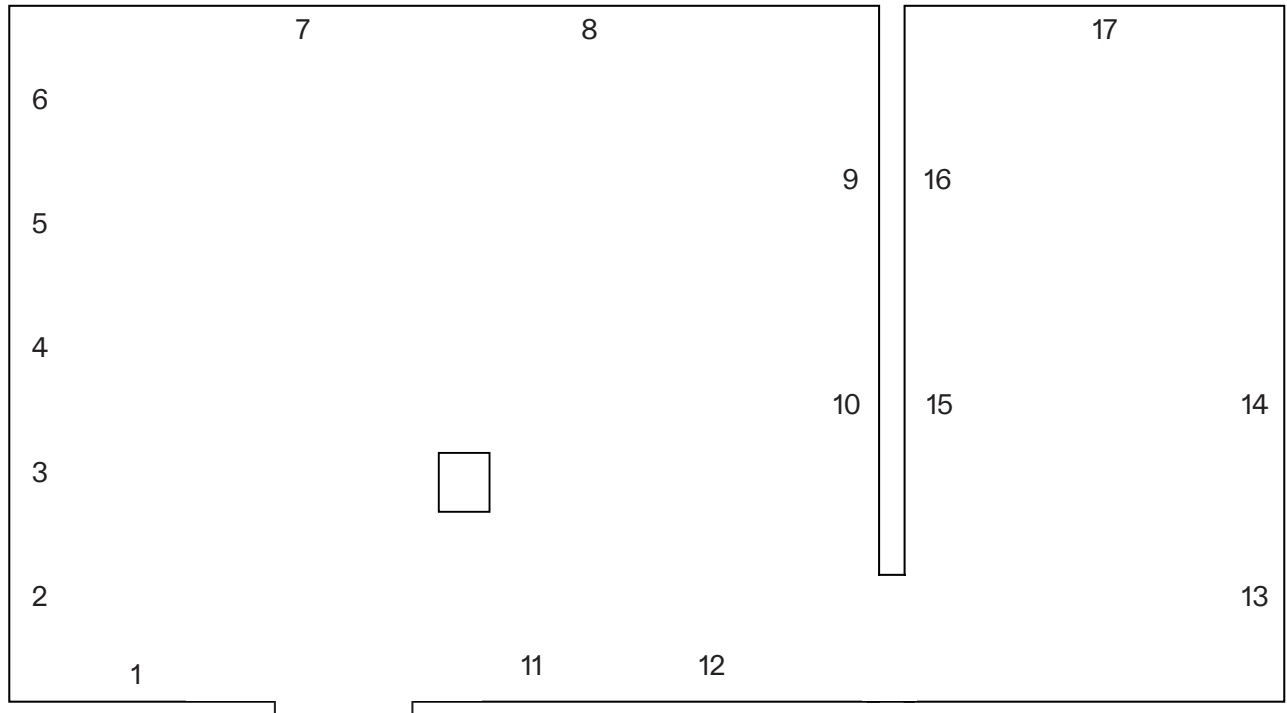


CARLOS/ISHIKAWA

Unit 4, 88 Mile End Road, London E1 4UN
www.carlosishikawa.com
gallery@carlosishikawa.com
+44 (0) 20 7001 1744

Evelyn Taocheng Wang: *Patternmaster*
21 November – 21 December 2024



1
Pulling Pushing Dragging, 2024
Mineral color, calligraphy ink on silk
110 × 158.5 × 5 cm, framed

2 – 6
Diagram 1, 2024
Diagram 2, 2024
Diagram 3, 2024
Diagram 4, 2024
Diagram 5, 2024

Acrylic on canvas and wall
124 × 95 × 2.5 cm, each of 5

7
Bodymentalbody Strength and Imitation of Agnes Martin, 2024
Acrylic, gesso, pencil on linen canvas
185 × 185 × 2.5 cm

8
Clayarks (With Feather) and Mirror and Imitation of Agnes Martin, 2024
Acrylic, gesso, pencil on linen canvas
185 × 185 × 2.5 cm

9
Untitled, 2024
Calligraphy ink, mineral colour, glue, and artist's seal on paper
48.3 × 42 × 3.5 cm, framed

10
Four Paintings' Techniques and Imitation of Desert Flower, 2024
Acrylic, gesso, pencil on linen canvas
185 × 185 × 2.5 cm

11
Teray's End, 2024
Oil, acrylic, and pencil on canvas
100 × 100 × 2.5 cm

12
Betrayal, and Independence, 2024
Oil and pencil on canvas
100 × 100 × 2.5 cm

13
Teray's Empty World, Raw Chicken Legs, 2024
Oil on canvas
30 × 40 × 2 cm

14
The World That Amber Can't Heal, 2024
Oil on canvas
150 × 150 cm

15
The Solaris in Sunny Dutch Window, 2024
Oil on linen canvas
100 × 80 × 2.5 cm

16
Teray's Empty World, Raw Chicken Wings, 2024
Oil on canvas
30 × 40 × 2 cm

17
I Would Never Like to Have Any Mental Links with My Bookkeeper, 2024
Oil and pencil on canvas
200 × 200 × 2.5 cm