



*violet sissy*  
*fleur pinkie*

Matt Morris

November 9, 2024 – January 11, 2025

EXHIBITION CHECKLIST  
Clockwise from entrance



*There She Goes, 2024*  
reduced scale French windows, wood, adhesive vinyl lettering,  
hinges, miniature doorknobs, green latex paint matched to  
Rose Sélavy's 1920 sculpture *Fresh Widow*, gallery white  
latex paint, McDonald's drink carriers  
60" x 27" x 10"  
MM092



*The Women (Gay Block. Untitled (Brooch), 1994), 2024*  
oil, costume jewelry brooches, rice powder on  
Belgian linen over aluminum panel with poplar cradle  
20" x 24"  
MM093

R U S C E H M A N



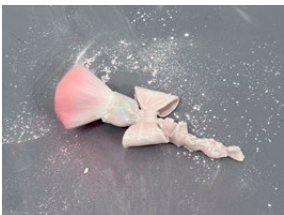
*levee, 2024*  
ruched curtain of tulle netting with satin ribbon cords  
MM094



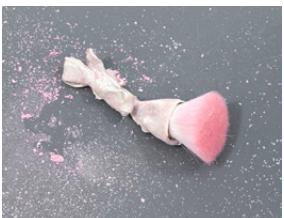
*Homage to the Romantic Hellfire Club Grotto, 2024*  
plastic action figure, glazed porcelain, miniature white fishnet stockings, Dresden embossed foil paper witch, antique velveteen red heart, crushed Ambien, silk, embroidery floss, digitally printed satin, polyfil stuffing, plastic beauty counter doll furniture  
7" x 9.5" x 4"  
MM095



*even the moon crisis makeup! is wearing makeup – naruse, 2024*  
porcelain, glazed stoneware, vintage kimono silk, Mary Kay consultant Glamour Shade organizer tray ca. 1985, Odette Parfum Co. bubble mailers, satin digitally printed with detail view of Joe Brainard's 'If Nancy Was a Boy,' 1972, polyfil stuffing, thread, tapered end false eyelashes on plastic backing, vintage velvet orchids, pleated and bound antique ribbon ornament  
8" x 14.5" x 15"  
MM096



*Madge Garland, the siren of the powder magazines, 2024*  
porcelain, cosmetic makeup brush bristles, Hermes Silky Blush powder in 'Rose Plume' and Dior Rouge Blush in 'Poison'  
1.5" x 6.5" x 3"  
MM097



*lady woolworth – lil picard, 2024*  
porcelain, cosmetic makeup brush bristles, Covergirl Cheekers blush in 'Pink Candy'  
1.5" x 4.5" x 2"  
MM098

R U S C E H M A N



*silk chiffon silk hotel, 2024*

velvet upholstered desk chair on casters, porcelain, makeup brush bristles, antique ostrich plume (gift from Emmy Bright), chicken feathers, dyed goose coquille, duck down, embroidery flosses, shards of mother of pearl shank buttons, Serge Lutens paper smelling strips, ABS plastic artificial nails with crystal ornaments, stolen nail varnish, oil paint, perfumed powder, incense ash, PVA glue, ground white hominy

34" x 25" x 25"

MM099



*yharnam, pthumerian queen is a chalice dungeon boss, and adoration for soshiro matsubara, 2024*

porcelain, glass, velvet, candles, parfum, rice flour, corn starch, silk peptide powder, lambs wool powder puff, polyfil, waxed thread

16.5" x 9" x 9"

MM100

*tallulah – a powder that can turn into anything – wishes, 2024*

parfait of rice flour, corn starch, silk peptide powder perfumed with compositions comprising violet, iris, carrot seed, heliotrope, rose, carnation, aldehydes, lavender maillette, peony, orange blossom, bergamot, raspberry, clove, anise, black peppercorn, pink peppercorn, cocoa, labdanum, white musks, cedar, fir balsam, palo santo, ho wood, sandalwood, leather, butter CO2, beeswax, wet clay, artemisia, elemi, basil, eucalyptus, tea tree oil, peppermint, celery seed, tonka bean, vanilla absolute, civet



*Grotto to the Romantic Avon Calling Grotto, 2024*

novelty perfume bottles, glazed porcelain, polymer clay, silk, embroidery floss, digitally printed satin, polyfil stuffing, stolen nail varnish, plastic beauty counter doll furniture, plastic vanity doll furniture

8" x 10.5" 7"

MM101

R U S C E H M A N



*destroy, she sulked, 2024*

reduced scale French windows, wood, adhesive vinyl lettering, hinges, miniature doorknobs, green latex paint matched to Rose Sélavy's 1920 sculpture *Fresh Widow*, gallery white latex paint, rose stained glass, porcelain, handmade paper collage by André Marin (*Milkshake, 2021*, handmade paper), cosmetic brush bristles, marabou feathers, antique dyed ostrich plumes, duck down, geisha coloring book pages with marker, satin pillows printed with images of copies of Florine Stetthaimer's *A Model (Nude Self Portrait)*, ca. 1915, miniature Schiaparelli Shocking perfume bottle, miniature chaise lounges, miniature vanities, mother of pearl gambling chips, glass vial, Cathy figurine, Revlon powder blush in 'Mauvelous,' Vicky Tiel 1994 Sirene eau de parfum, Valentina Poudre perfume bottle, Etat Libre d'Orange Putain de Palaces perfume bottle, bottle, parfum, ash, Chinese flowering jasmine tea gift from Matt Ryan, rice flour, corn starch, silk peptide powder, pink setting powder, translucent setting powder, candles, wax, Lisa Eldridge Velvet Blush Lightly lipstick, polymer clay, artificial pearls, glitter, iris incense, violet incense, rose incense, heliotrope incense, embossed oil cloth, velvet, silk, silk ribbon, rayon satin ribbon, sequins, glass beads, paper tablecloth, plastic, duct tape, stolen nail varnish, antique plastic comb with satin ribbonwork, plastic Mardi Gras king cake baby, Clue: The Great Museum Caper game piece, color laser print of collage by Sabrina Ward Harrison, color laser print of Antoine Watteau's *Pierrot (Gilles)*, c. 1718–1719, plastic cloche with antique silk chrysanthemum, porcelain beads stained with watercolor, makeup applicator sponge, Hermes blush compact applicator, underwear label, tissue paper, laminated corrugated paper board, polyfil, silver permanent marker, ink, waxed thread, collapsible sewing table

60" x 48" x 23"

MM102



*mama madame, 2024*

porcelain, cosmetic brush bristles, Revlon powder blush in 'Mauvelous'

1.5" x 4.5" x 2.25"

MM103

R U S C E H M A N



*she was at the heart of the writing because she was naive, because she was very young, she didn't know what she was lugging around inside herself, this tremendous force, this tremendous power of pain that she could bring – duras, 2024*

porcelain, velvet, marabou feathers, parfum, rice flour, corn starch, silk peptide powder

13" x 8" x 8"

MM104



*you were an old lady and a young lady and a very little girl – hilst, 2024*

porcelain

10" x 9" x 6"

MM105



*the obscene madame d – hilst, 2024*

porcelain, cosmetic brush bristles, L'Oreal Paris Colour Riche Monos Eyeshadow in 'Mademoiselle Pink'

1.75" x 8" x 3"

MM104



*Damenklub Violetta, 2024*

flashe on Belgian linen over aluminum panel with poplar cradle

30" x 26"

MM105

R U S C E H M A N



*she's a fantasist you know. that lady.*  
*hotel lobbies are full of them – duelle, 2024*  
 porcelain, cosmetic brush bristles, BBIA powder cheek in 'Powder Pink,' Etat Libre d'Orange Putain de Palaces eau de parfum  
 1" x 3.5" x 3.5"  
 MM106



*spoon woman – bourgeois (white okra), 2024*  
 porcelain (two elements), cosmetic brush bristles, Wet n Wild blush in 'Pearlescent Pink,' kakashow blush palette  
 1.25" x 6" x 1.25" and 1" x 2" x 1.5"  
 MM107



*this is what makes us girls – white witch, 2024*  
 flashe, antique silk appliqué on Belgian linen over aluminum panel with poplar cradle  
 89" x 43"  
 MM108



*i work in a market as a checkout girl – i had a feeling that i belonged – dream girl, 2024*  
 flashe, antique moire ribbon, porcelain, perfumed powder on Belgian linen over aluminum panel with poplar cradle  
 89" x 43"  
 MM109

R U S C E H M A N



*Ms. Scheherazade Dalloway-Havisham, 2024*  
porcelain vase  
11" x 9" x 9"  
MM110



*Mrs. Estelle Lestrangle, 2024*  
dyed marabou feathers, duck down, perfumed powder, porcelain,  
vintage silk ribbon (gift from Laurie Stern), silk ribbon, rayon satin  
ribbon, Bvlgari ribbon, digitally printed satin, vintage kimono silk,  
molded plastic bows, waxed thread, hot glue,  
polyfil, dowel, MDF panel  
17" x 8" x 5" (full length with ribbons 28")  
MM111



*madame de..., 2024*  
porcelain, cosmetic brush bristles, Maybelline New York FIT ME blush  
in 'Mauve,' Sephora Colorful mat eyeshadow in 'Strawberry Macaron'  
.75" x 9.5" x 3"  
MM112



*women, world, whimsy, wonder – vaginal davis – it was a she named  
tuffy – viola davis, out of sight, soderbergh – only the chorines, bull  
daggers, aesthetical Negroes, lady lovers, pansies, and anarchists  
supported her experiments in living free. she was their avenging angel.  
only the wayward appreciated her riotous conduct; only they could  
discern the beautiful plot against the plantation she waged each and  
every day – saidiya hartman, 2024*  
porcelain, antique moire silk ribbon, custom MDF shelf  
8.5" x 7" x 6.5"  
MM113

R U S C E H M A N



*I don't dress like this because I want to look like a girl,  
I dress this way because I want to look like a faggot!*  
(Sherrie Levine. *Salubra 3, 2007*) ii, 2024  
oil on mahogany  
27" x 24"  
MM114



*I don't dress like this because I want to look like a girl,  
I dress this way because I want to look like a faggot!*  
(Sherrie Levine. *Salubra 3, 2007*), 2024  
oil on mahogany  
27" x 24"  
MM115



*The Women* (Ishiuchi Miyako. *Frida by Ishiuchi #39, 2013*), 2024  
oil, silk fiber rosettes ca. 1800s on Belgian linen  
over aluminum panel with poplar cradle  
27.75" x 18"  
MM116



*Garage to the Romantic McDonald's Girl Toy Grotto*, 2024  
plastic figurine, glazed porcelain, antique miniature bottle of Caron  
French Cancan perfume from J Kent, satin appliqués, plastic pearl, silk  
ribbons, silk, embroidery floss, digitally printed satin, polyfil stuffing,  
plastic beauty counter doll furniture  
6.5" x 9" x 4"  
MM117



R U S C E H M A N

In lavatory:



*The Horizontal Mourners*, 2007, recreated 2024  
video, 2 min 54 sec.  
edition of 3 + AP  
MM118

In office:



Lori Larusso  
*Creme Puff USA*, 2021  
acrylic on panel  
9" x 8"  
LL001



Alan Reid  
*Medusa's Melancholia*, 2021  
acrylic on linen  
20" x 14"  
AR011

RUSCHMAN



Mari Eastman  
*Pink Kitty Cats*, 2018  
 oil and pen on bleached linen  
 20" x 16"  
 ME042



Marcia Hafif  
*Double Glaze Painting: Cadmium Red / Payne's Grey*, 2002  
 oil on canvas  
 16" x 16"  
 HAFB17

I wish to extend heartfelt thanks to Eric and the Ruschman team for hosting, supporting, and partnering in life and in the vision for this project. This is the world I live in; this world lives in me. André—a lover, a helper, a dearest conversant in our companion exhibition *Pink Days and Terroir Days*, and in the ongoing conversation of our lives. Nicole Mauser and Matt Brown and Space & Time for hosting André and my sister exhibition. Alan Reid, Lori Larusso, and Mari Eastman: thank you for befriending me, inspiring me, and being such good company in this infernal boudoir. My darling Eia Radosavljevic, the gestures and techniques and heart you've shared with me show up again and again throughout these works. Thank you Judith Brotman for being a sister sorceress. Thank you Jill H. Casid, Anna Campbell, Dushko Petrovich, Mark Harris, Morgan, and Matthew Girson for key moments of encouragement as this dream took shape. I am so very grateful to Gnarware Workshop where I have been developing work in porcelain: Liz McCarthy, Frenchy Villagrana, Ike Floor, and the other staff have epitomized support, patience, and community. To my birds of a feather—Laurie Stern, J Kent, Emmy Bright, Odette Fontaine—thank you for your generosity of spirit and the gifts; and likewise, Matt Ryan, who was my student, studio assistant, and friend who brought me flowering tea from China. This installation is replete with referentiality—adoring appropriations, citations, and analyzed works: I am humbled by this chosen family, by this [madame's] web. During the making, I have been accompanied by the memory of Marcia Hafif, her openness to sharing her practice with me years ago, and the legacy she has left behind. Most of all, my gratitude is in excess for my twin Michael J. Morris with whom I have navigated a sensitive, psychic childhood; all sorts of attachments, doubling, and parallel play; a lifetime of queer, femme practices. We are white witches and dream girls, all of us.

—Matt Morris // November 2024