

# Graham Foundation

**Martine Syms: *Incense Sweaters & Ice***  
September 28, 2018 — January 12, 2019

*All works by Martine Syms and courtesy the artist; Bridget Donahue, New York; and Sadie Coles HQ, London.*



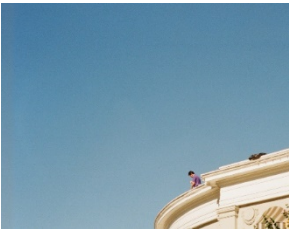
*Incense Sweaters & Ice*, 2017, video, color, sound, 72:00



*Belief Strategy XIV*, 2016, colored window film, dimensions variable



*GIRRRLGIRLLLGGGIRLGIIRL*, 2017, wall painting, dimensions variable



*Half Sheet*, 2017, archival pigment print on found poster, 28 x 22 in.

Printed on *The Legend of ...* (1972)



*40 x 60*, 2017, archival pigment print on found poster, 60 x 40 in.

Printed on *The T.A.M.I Show* (1964)

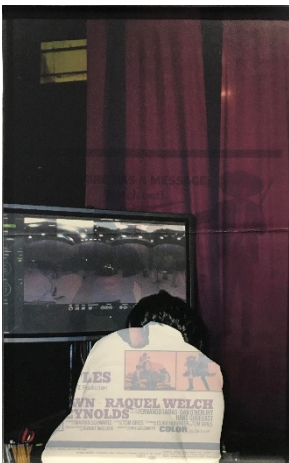
GF



*One Sheet*, 2017, archival pigment print on found poster, 40 x 27 in.  
Printed on *Putney Swope* (1969)



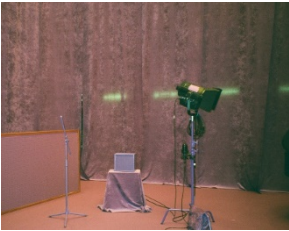
*Insert*, 2017, archival pigment print on found poster, 36 x 14 in.  
Printed on *Black Girl* (1972)



*Window Card*, archival pigment print on found poster, 22 x 14 in.  
Printed on *100 Rifles* (1969)



*Insert*, 2017, archival pigment print on found poster, 36 x 14 in.  
Printed on *Souder, Part 2* (1976)



*Half Sheet*, 2017, archival pigment print on found poster, 22 x 28 in.  
Printed on *Black Gunn* (1972)



*Window Card*, archival pigment print on found poster, 22 x 14 in.  
Printed on *Hi-De-Ho* (1947)

GF



*One Sheet*, 2017, archival pigment print on found poster, 40 x 27 in.  
Printed on *Boyz N the Hood* (1991)



*40 x 60*, 2017, archival pigment print on found poster, 60 x 40 in.  
Printed on *Truck Turner* (1974)



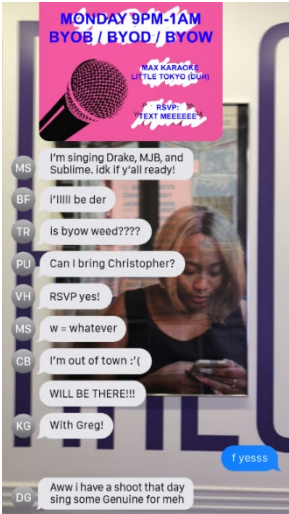
*Three Sheet*, 2017, archival pigment print, 81 x 41 in.  
Printed on *The Learning Tree* (1969)

GF



*Three Sheet*, 2017, archival pigment print, 81 x 41 in.

Printed on *Super Fly T.N.T* (1973)



*wyd rn?*, 2017, iOS app