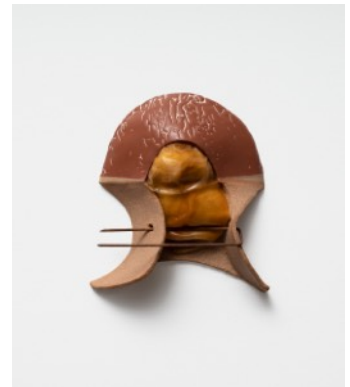


XYZ_BIO_SC_24_01

B. INGRID OLSON
Animal's Pull, 2020-2024
glazed ceramic, polyester fill, sun-aged
latex, rusted steel
22 x 20.5 x 6.5 cm
8 . x 8 x 2 . in



XYZ_BIO_SC_24_02

B. INGRID OLSON
Carriage (Impression), 2023-2024
cast aluminum
20.5 x 38 x 10 cm
8 x 15 x 4 in



XYZ_BIO_PH_24_03

B. INGRID OLSON
Draft of Errata (Hys), 2024
inkjet print and UV printed matboard in
powder-coated aluminum frame
68.5 x 45.5 x 3 cm
27 x 18 x 1 . in



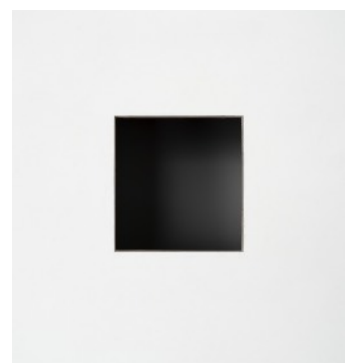
XYZ_BIO_Sc_24_04

B. INGRID OLSON
Cocks Juliet, 2020-2024
polyurethane foam, acrylic primer, latex
paint, epoxy, urethane adhesive, hollow
eggshells of unfertilized chicken eggs
two reliefs, installation variable
6.3 x 13.3 x 30.5 cm
2 . x 5 . x 12 in



XYZ_BIO_Sc_24_0

B. INGRID OLSON
Storage (Limen), 2024,
hole cut through a wall into a hidden storage space
22.5 x 21.7 cm



XYZ_BIO_Sc_24_0

B. INGRID OLSON

Living Sculpture (Hys), 2024

a corner of a room painted floor to ceiling in a tonal variant of the floor color with all light sources removed from the room, except fixtures directly over the painted wall
dimensions variable



XYZ_BIO_Sc_24_

B. INGRID OLSON - 2 -

Bird's Eye, n.d.

high-speed steel, rust

3.5 x 3.5 x 5 cm , 1 1/2 x 1 1/2 x 2 in



XYZ_BIO_Sc_24_

B. INGRID OLSON - 1 -

Both full face and from the side at once, Answer with the tip of a triangle, n.d.

, high-speed steel, rust

6 x 6 x 11 cm , 2 1/2 x 2 1/2 x 4 1/2 in



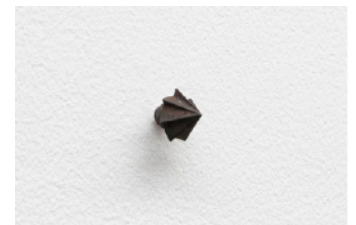
XYZ_BIO_Sc_24_

B. INGRID OLSON - 6 -

(a) condition (b) receiver; the, way, someone, something, called, an, which, itself, suggestion, of, this, are, quality, has, giving, n.d.

high-speed steel, rust

2 x 2 x 1.8 cm , 1 x 1 x 1/2 in



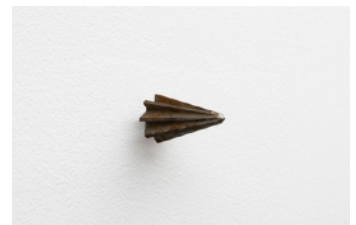
XYZ_BIO_Sc_24_

B. INGRID OLSON - 3 -

Presence Excess, n.d.

high-speed steel, rust

4 x 4 x 7.5 cm , 1 1/2 x 1 1/2 x 3 in



XYZ_BIO_Sc_24_

B. INGRID OLSON - 4 -

Too: face, instrument, name, n.d.

high-speed steel, rust

2.5 x 2.5 x 9.5 cm , 1 x 1 x 4 in



XYZ_BIO_Sc_24_

B. INGRID OLSON - 8 -

Ours and read it like a stage direction: lays a trail and denies the goal, n.d.

high-speed steel, rust

6 x 6 x 9.5 cm , 2 1/2 x 2 1/2 x 3 1/2 in



XYZ_BIO_Sc_24_

B. INGRID OLSON - 5 -

She, the third person, n.d.

high-speed steel, rust

4 x 4 x 7.5 cm , 1 1/2 x 1 1/2 x 3 in



XYZ_BIO_Sc_24_

B. INGRID OLSON - 7 -

There's nothing to describe as you become a part of that which is described and you have no perspective, n.d.

high-speed steel, rust

6 x 6 x 11 cm , 2 1/2 x 2 1/2 x 4 1/2 in



XYZ_BIO_Sc_24_

B. INGRID OLSON - 9 -

No, it is open on one position, no, it is opposition

high-speed steel, rust

5 x 5 x 10 cm

XYZ_BIO_Sc_24_

B. INGRID OLSON - 10 -

One figure mine, one other, also different from you

1.5 x 1.5 x 2 cm

XYZ_BIO_Sc_24_

B. INGRID OLSON - 11 -

No door, no window, no ceiling, but in it, a separation from personality

3.8 x 3.8 x 7.4 cm

XYZ_BIO_Sc_24_

B. INGRID OLSON - 12 -
Runner
3.5 x 3.5 x 7 cm

XYZ_BIO_Sc_24_

B. INGRID OLSON - 13 -
Constructor
3.5 x 3.5 x 7.8 cm

XYZ_BIO_Sc_24_

B. INGRID OLSON - 14 -
Actor
3.8 x 3.8 x 7 cm

XYZ_BIO_Sc_24_

B. INGRID OLSON - 15 -
Her entry into the room itself marked by a question, from where, to where
6 x 6 x 10.8 cm

XYZ_BIO_Sc_24_

B. INGRID OLSON - 16 -
*the roam or the narrow, other or order, eye foot alignment do you hereby still want,
or rather still want to sit still, hey you, opposable woman*
1.3 x 1.3 x 10 cm

XYZ_BIO_Sc_24_

B. INGRID OLSON - 17 -
I arrange my papers; I stop being human
5.8 x 5.8 x 11 cm

XYZ_BIO_Sc_24_

B. INGRID OLSON - 18 -
Where are my coat, my ideas, my name?
3.5 x 3.5 x 7 cm

B Ingrid Olson at XYZcollective
2024.10.26 - 11.24

XYZcollective
2-13-4-B02 Sugamo , Toshima-ku , Tokyo 170-0002
xyz.cobra@gmail.com

XYZ_BIO_Sc_24_

B. INGRID OLSON - 19 -
oneself, world, fun
3.8 x 3.8 x 7 cm

XYZ_BIO_Sc_24_

B. INGRID OLSON - 20 -
searching on all fours
6 x 6 x 11 cm

XYZ_BIO_Sc_24_

B. INGRID OLSON - 21 -
I'm not the spectator I'm accustomed to being; I'm not in front of him, nor am I
3 x 3 x 6.2 cm

XYZ_BIO_Sc_24_

B. INGRID OLSON - 22 -
Ours, conditional
4 x 4 x 7 cm

XYZ_BIO_Sc_24_

B. INGRID OLSON - 23 -
4 - telescoped (time collapsed) 7 - antecedents (life relations) 8 - subject (subject)
6 x 6 x 10.2 cm

XYZ_BIO_Sc_24_

B. INGRID OLSON - 24 -
Masculine Material
1.8 x 1.8 x 2 cm

XYZ_BIO_Sc_24_

B. INGRID OLSON - 25 -
my finger tracing her and she
3.7 x 3.7 x 6.9 cm

XYZ_BIO_Sc_24_

B. INGRID OLSON - 26-
says and spits out something that used to be a part of her body but now no longer is
4 x 4 x 7 cm

XYZ_BIO_Sc_24_

B. INGRID OLSON - 27-
Every Animal, stand in
3.9 x 3.9 x 7.5 cm

XYZ_BIO_Sc_24_

B. INGRID OLSON - 28-
Instinct's Attention fastens itself to nothing but a single point
4.5 x 4.5 x 7.3 cm

XYZ_BIO_Sc_24_

B. INGRID OLSON - 29-
Hole, stet
2 x 2 x 7.9 cm

XYZ_BIO_Sc_24_

B. INGRID OLSON - 30-
Sum, mirrored: 4 brains, 4 sexes, 2 channels, 2 reservoirs
5.5. x 5.5 x 10.5 cm

XYZ_BIO_Sc_24_

B. INGRID OLSON
psycho index, machine, per hys, 2014-2024
inkjet print, laser print, transparency, lithographic print, adhesive, masking tape, staple
14 x 11.5 x 1 cm , 5 1/2 x 4 1/2 x 1/2 in



XYZ_BIO_Sc_24_

B. INGRID OLSON

Psycho Index (Painting Index), 2024

polyurethane modeling foam, PVA size, vinyl paint, enamel paint, graphite, sand, aluminum tape, staple, tissue paper, inkjet print, laser print, transparency, artists tape plastic
14 x 11.5 x 1 cm , 5 1/2 x 4 1/2 x 1/2 in



XYZ_BIO_Sc_24_

B. INGRID OLSON

Artists Book, 2008-2024

aluminium, Plexiglass; including Portrait of an Architect, 2019, ink on yupo paper; Excess, 2008, gouache on paper; Excess Daily Drawing, 2010, watercolor on paper; Excess, 2007, gouache on paper; Copy Drawing, 2010, xerox on paper
30.5 x 23 x 5 cm , 12 x 9 x 2 in



XYZ_BIO_Sc_24_

B. INGRID OLSON

Artists Book, 2012-2024

aluminium, Plexiglass, including Soft Drawing, two figures, 2012, grease pencil on tissue paper; Architects' Portrait, 2019, ink on Velum; Storage, 2024, glazed ceramic
28 x 43 x 5.cm , 11 x 17 x 2 in



XYZ_BIO_Sc_24_

B. INGRID OLSON

Artists Book, 2007-2024

aluminium, Plexiglass, including Reverse Clock Painting, 2024, gouache and acrylic on door edge paper; Rebirth Head in Shirt, 2008, graphite on post-it note; Mask Drawing, 2008, ink on paper; Proof for Errata, 2015, silver gelatin print; Dark Drawing, 2011, charcoal on paper; Architect's Thought, 2019, ink on Yupo paper; Drawing for Why Does my Vestibule Hurt, 2022, graphite and ink on velum paper
27.9 x 36.8 x 5.1 cm , 11 x 14 . x 2 in

