

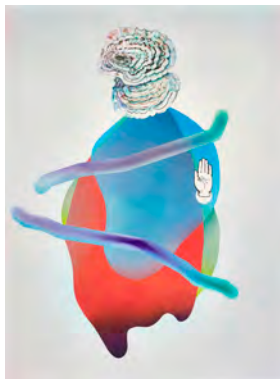
Kadel Willborn
Birkenstr. 3
D – 40233 Düsseldorf

info@kadel-willborn.de
www.kadel-willborn.de

Benedikt Hipp



Benedikt Hipp
neonatal refractions No 31, 2018
oil and varnish on MDF,
188 x 139 cm



Benedikt Hipp
neonatal refractions No 32, 2018
oil and varnish on MDF,
188 x 139 cm



Benedikt Hipp
neonatal refractions No 33, 2018
oil and holographic glitter on MDF,
188 x 139 cm

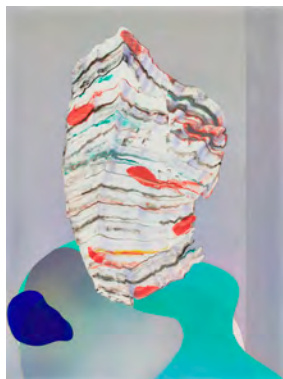


Benedikt Hipp
neonatal refractions No 30, 2018
oil and varnish on MDF,
104 x 76 cm

Kadel Willborn
Birkenstr. 3
D – 40233 Düsseldorf

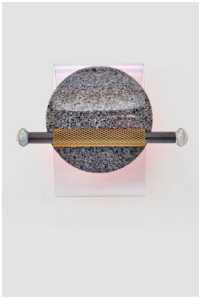
info@kadel-willborn.de
www.kadel-willborn.de

Benedikt Hipp



Benedikt Hipp
neonatal refractions No 28 (Head), 2018
oil and holographic glitter on wood,
58 x 43 cm

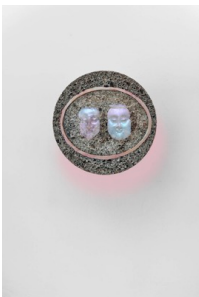
Benedikt Hipp



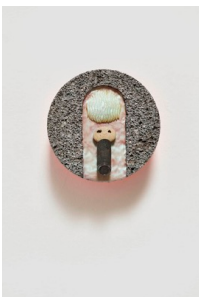
Enlarged chip implant (ancient recordings) No 1, 2018
aluminium foam, PVC, brass,
polyurethane cast, iron, color,
approx. 30 x 40 x 10 cm



Enlarged chip implant (ancient recordings) No 2, 2018
aluminium foam, PVC, brass,
found stone, aluminium, color,
approx. 30 x 24 x 10 cm



Enlarged chip implant (ancient recordings) No 3, 2018
aluminium foam, polyurethane
cast, glass, color, mica, liseed
oil cement,
approx. 24 x 10 cm



Enlarged chip implant (ancient recordings) No 4, 2018
aluminium foam, polyurethane cast,
found stone, color, mica, liseed oil
cement, approx. 24 x 10 cm

Kadel Willborn

Birkenstr. 3 & 20

D – 40233 Düsseldorf

info@kadel-willborn.de

www.kadel-willborn.de



Enlarged chip implant (ancient recordings) No 5, 2018
aluminium foam, polyurethane cast, color, cable, approx. 24 x 40 cm