

MADELEINE ROGER-LACAN

PIERRE

KLOSSOWSKI



# MADELEINE ROGER-LACAN

## PIERRE KLOSSOWSKI

13 October - 9 November 2024

### **Atrata by Gil Presti**

30 galerie de Montpensier  
Jardin du Palais Royal  
75001 Paris

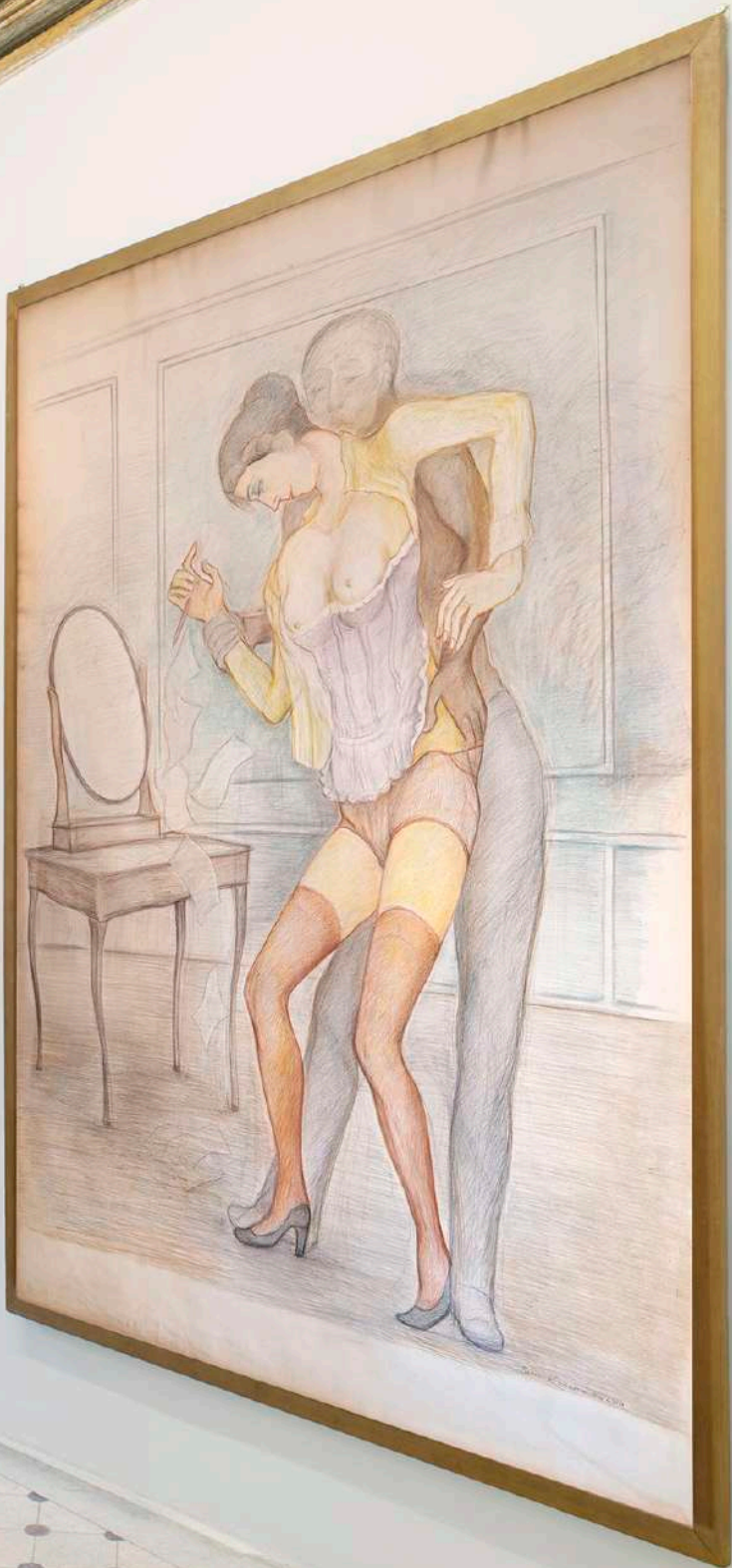
The exhibition presents a selection of works by French artist Madeleine Roger-Lacan in resonance with an iconic drawing of Pierre Klossowski. Roger-Lacan's work explores themes of love, loss and sexuality. She often interrogates the limits of paintings through assemblages and paintings getting out of the classical frame.

**Madeleine Roger-Lacan** (born in 1993 in Paris) is a French artist based in Paris. She graduated from the École Nationale Supérieure des Beaux-Arts in Paris and the Slade School of Fine Art in London. Her recent group exhibitions include *Lacan, When Art Meets Psychoanalysis* at the Centre Pompidou-Metz (2024), *Al Dente* at Berntson Bhattacharjee Gallery in London (2023), *Entre tes yeux et les images que j'y vois* at Fondation Ricard in Paris (2022), *Salto In Altro* at Palazzo Monti in Brescia (2021), and *Cinématissime* curated by Dominique Païni at the Musée Matisse in Nice (2019). Roger-Lacan's work was the subject of solo exhibitions, including *Lay Down With Me* at Galerie Eigen+Art in Berlin (2024) and *Painting Under My Skirt* at galerie frank elbaz in Paris (2022).

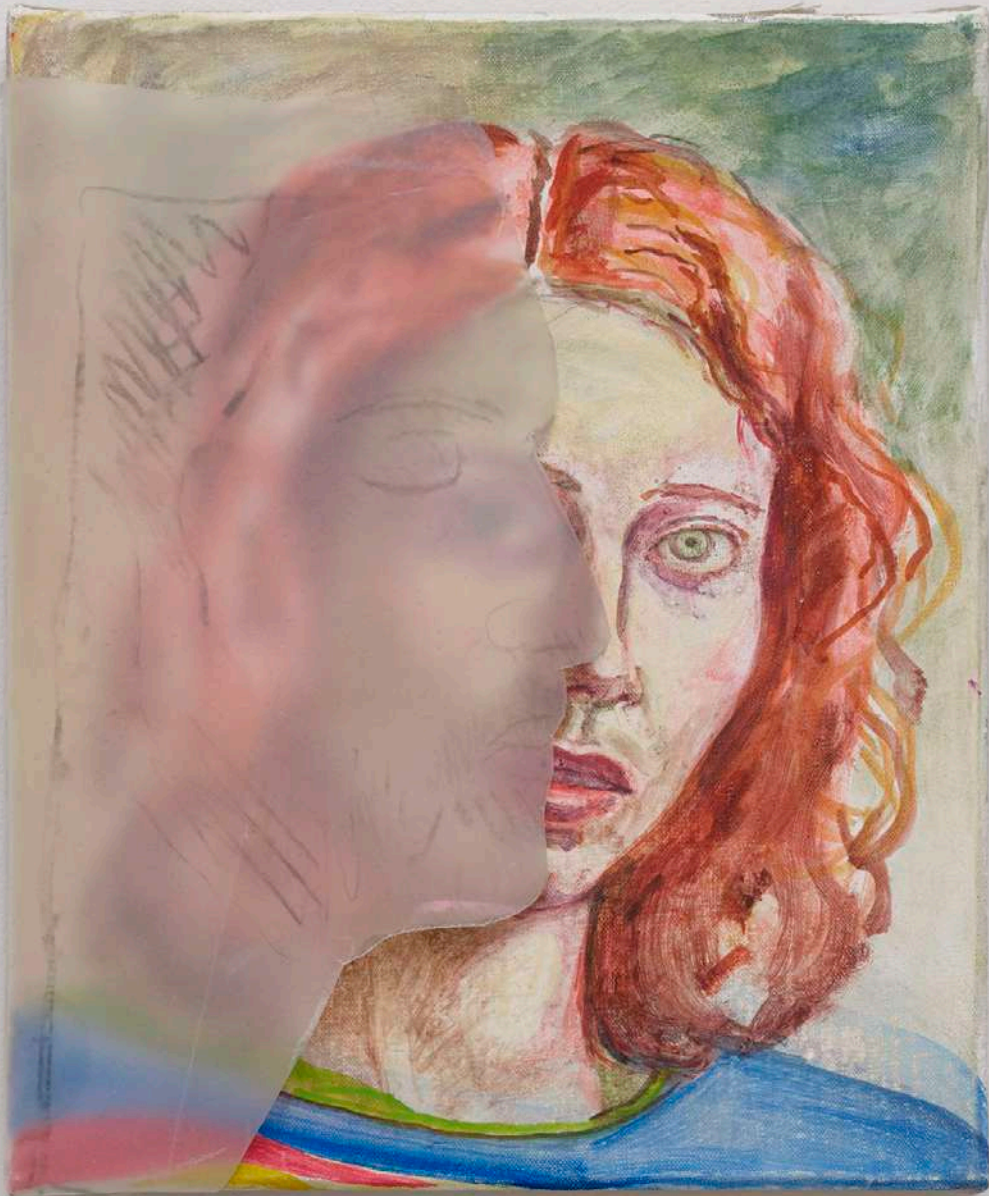
**Pierre Klossowski** (1905, Paris – 2001, Paris) was a French writer, philosopher, translator, and artist known for his intellectual contributions to literature and art, as well as his provocative and erotic works. He was the elder brother of the famous painter Balthus and was deeply influenced by themes of desire, transgression, and theology. He has often depicted characters inspired by his own mythology, including Roberte, who appears in his trilogy "The Laws of Hospitality."

The presented drawing is one of the largest created by Pierre Klossowski and features the figure of Roberte. In her public life, she is a powerful intellectual woman, serving as an inspector for the censorship commission. In her private life, she is part of a libertine couple with her husband, willingly staging herself in erotic scenes. This artwork stands at the boundary between her two worlds, public and private, depicting the struggle between freedom and sensuality, embodied by the male phantom figure, and censorship, embodied by Roberte.









Madeleine Roger-Lacan  
Autoportrait au calque, 2024  
Oil and tracing paper on canvas  
27 x 22,5 cm / 10.6 x 8.5 inches









Pierre Klossowski  
Vittorio interrompant la censure de Roberte, 1979  
Coloured pencils on paper  
220 x 150 cm / 86.6 x 59 inches





Madeleine Roger-Lacan  
Silence de ma chambre, 2022  
Watercolour on paper  
23.5 x 31.5 cm / 9 x 12.2 inches unframed

Madeleine Roger-Lacan  
Pink Room Study 2 (Finding You in My Dream), 2023  
Watercolour on paper  
42 x 29.7 cm / 16.5 x 11.4 inches unframed







Madeleine Roger-Lacan  
Pink Room Study 3, 2023  
Watercolour on paper  
42 x 29.7 cm / 16.5 x 11.4 inches unframed



Madeleine Roger-Lacan  
Pink Room Study 1, 2023  
Watercolour on paper  
29.7 x 42 cm / 11.4 x 16.5 inches unframed







Madeleine Roger-Lacan  
Destruction annoncée, 2024  
Oil, acrylic, paper on wood  
110 x 90 cm / 43.3 x 35.4 inches





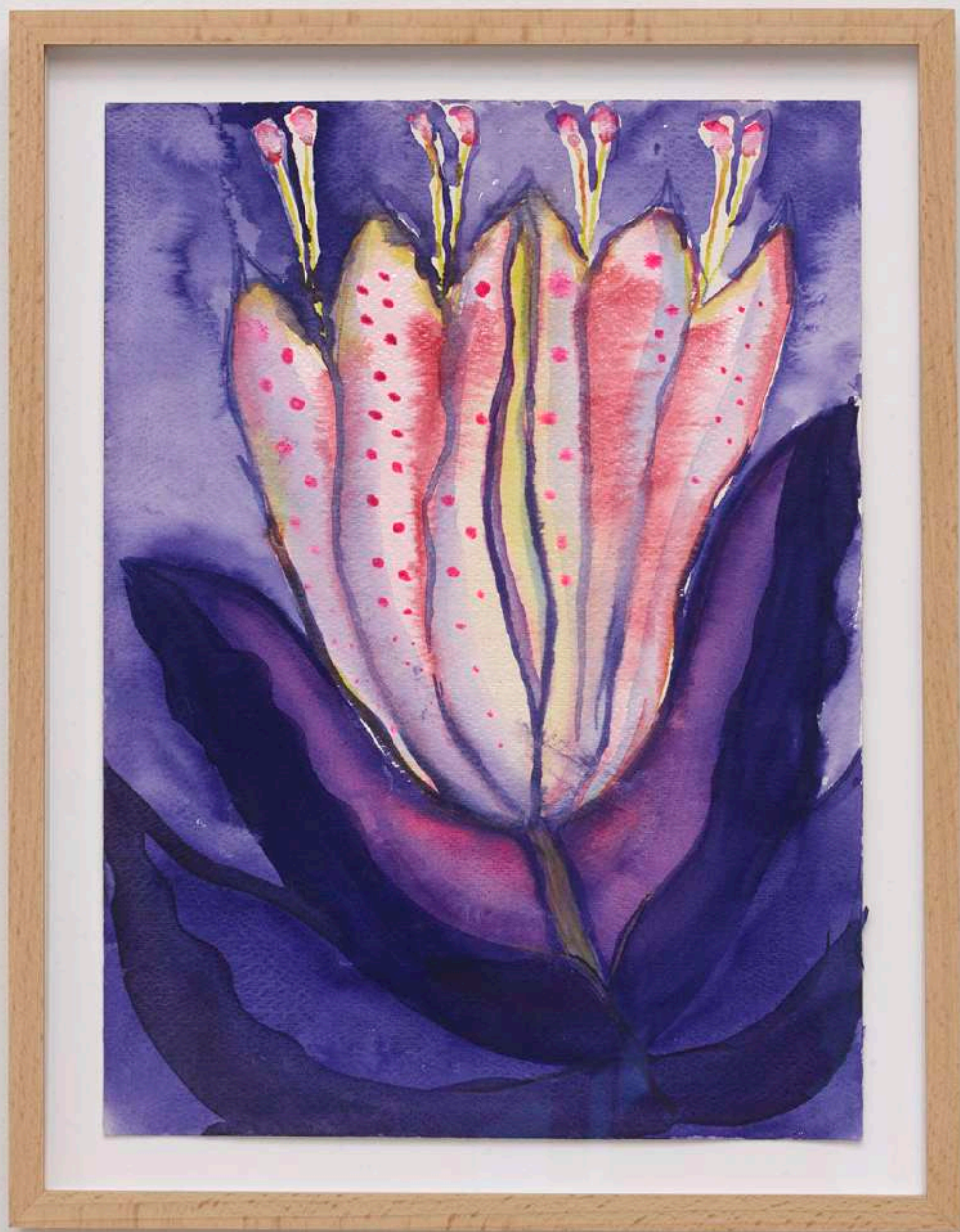
Madeleine Roger-Lacan  
Watching Us, 2021  
Watercolour and pencil on paper  
29.7 x 21 cm / 11.4 x 8.2 inches unframed



Madeleine Roger-Lacan  
Fente, 2021  
Watercolour and pencil on paper  
29.7 x 21 cm / 11.4 x 8.2 inches unframed







Madeleine Roger-Lacan  
Fleur, 2023  
Watercolour and pencil on paper  
31 x 22.5 cm / 12.2 x 8.6 inches unframed

