

# ULTERIOR

**E'wao Kagoshima / Kazumi Tanaka / Mamie Tinkler**

*Voyage*

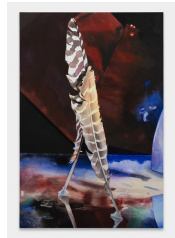
November 15—December 21, 2024



E'wao Kagoshima  
*Lone Sharking*, 2010  
Colored pencil and graphite on paper  
11 <sup>7</sup>/<sub>8</sub> x 11 <sup>3</sup>/<sub>8</sub> in (30.2 x 28.9 cm)  
KAGew-006



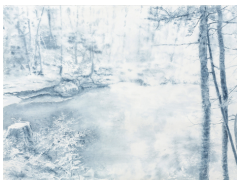
Mamie Tinkler  
*Dress Rehearsal*, 2024  
10 <sup>5</sup>/<sub>8</sub> x 8 <sup>1</sup>/<sub>8</sub> in (27 x 20.6 cm)  
TINma-042



Mamie Tinkler  
*The Embrace*, 2023  
Yorick in Space  
Watercolor and gouache on paper mounted to dibond  
24 x 16 in (61 x 40.6 cm)  
TINma-041



E'wao Kagoshima  
*Utopia / Dystopia*, 2016  
Acrylic and mixed media on canvas  
16 x 20 x <sup>3</sup>/<sub>4</sub> in (40.6 x 50.8 x 1.9 cm)  
KAGew-004



Kazumi Tanaka  
*Blue Hole*, 2022  
Organic indigo ink on paper  
22 <sup>1</sup>/<sub>2</sub> x 30 in (57.2 x 76.2 cm)  
TANKa-003

# ULTERIOR



Mamie Tinkler  
*Amethyst Cavarn*, 2024  
9 x 12 in (22.9 x 30.5 cm)  
TINma-044



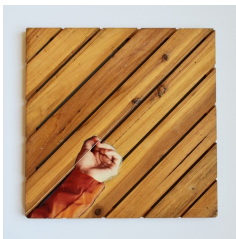
Mamie Tinkler  
*Malachite Voyage*, 2024  
Oil on dibond  
9 x 12 in (22.9 x 30.5 cm)  
TINma-043



Kazumi Tanaka  
*Star*, 2024  
Male deer skull, brass strings, brass mount with wooden pedestal  
15 x 14 x 18 in (38.1 x 35.6 x 45.7 cm)  
32 x 14 x 18 in (81.3 x 35.6 x 45.7 cm) Pedestal  
TANKa-002



Kazumi Tanaka  
*Harmony*, 2021  
Fragments of one animal skull, mother of pearl, metal string, brass, old piano key Two string  
10 <sup>1</sup>/<sub>2</sub> x 3 <sup>1</sup>/<sub>4</sub> x 2 <sup>1</sup>/<sub>4</sub> in (26.7 x 8.3 x 5.7 cm) Bass guitar  
1 <sup>3</sup>/<sub>4</sub> x 2 <sup>1</sup>/<sub>2</sub> x 2 <sup>1</sup>/<sub>2</sub> in (4.4 x 6.4 x 6.4 cm) Harmonica  
TANKa-001



E'wao Kagoshima  
*UNTITLED*, 2016  
15 <sup>7</sup>/<sub>8</sub> x 15 <sup>7</sup>/<sub>8</sub> x <sup>3</sup>/<sub>4</sub> in (40.3 x 40.3 x 1.9 cm)  
KAGew-005

# ULTERIOR



**In the viewing room:**

E'wao Kagoshima

*White Circle*, 1976

Mixed media on paper board

13 <sup>1</sup>/<sub>8</sub> x 10 <sup>7</sup>/<sub>8</sub> x <sup>5</sup>/<sub>8</sub> in (33.3 x 27.6 x 1.6 cm)

KAGew-001



**In Kitchen:**

Mamie Tinkler

*Daybreak*, 2023

Watercolor and gouache on paper mounted on dibond

20 x 30 in (50.8 x 76.2 cm)

TINma-032