

Reina Sugihara
Respirare

Empty Gallery
3 Yue Fung Street
18th & 19th Floor
Tin Wan, Hong Kong

Reina Sugihara

Respirare

Empty Gallery, Hong Kong

8 December 2024 – 1 March 2025

Empty Gallery is pleased to present *Respirare*, Tokyo-based painter Reina Sugihara's first solo exhibition with the gallery. Sugihara's enigmatic canvases emerge from a gradual and ritualistic process of tracing, layering, and effacement often enacted over a period of months or years. Her paintings first coalesce around the intuitive selection of a found object, whose essential mystery and perceptual ambiguity become a site of sustained phenomenological investigation. Mediated first through the sieve of embodied consciousness and then through the hand of the artist, these objects are transmuted into luminous deposits of gesso and oil, pigment and binder—emergent and quivering contours whose contingent organicism suggests a self-sustaining reality. Striking in their anachronistic approach to a medium often fraught with its own history, Sugihara's paintings share affinities with the automatism of the Surrealists, the corporeal tendencies of post-war Japanese and European painting, and the contemplative traditions of religious art, but are, quietly, all their own.

At first glance, the category of landscape painting might seem a strange heuristic for approaching the work of Sugihara. However, these paintings—with their feral palettes evoking rust, tar, and mud—do speak to us of the earth, even if they do so in a way which we may not be used to. They recall it in their very materiality, in their sulfurous eruptions of color and their pellucid swirls of milky pigments, their resinous encrustations and shimmering mineral hazes. They bear a certain resemblance to geological processes or formations—but the question still remains, how are they landscapes? If the classical landscape tradition held up a certain notion of the autonomous subject (or the disembodied ego) as both source and model, then from whence does Sugihara's painting depart?

In a moment when the methodology of plein air painting is experiencing a kind of hesitant return, Sugihara proceeds in the opposite direction, moving from sun-filled expanse to dusky interior, from triumphant vision to halting touch; a deliberate return to the cave. Her practice embraces not only the primacy of the haptic, but foregrounds a sort of active

dwelling or charged co-existence through the temporal project of tracing an external object. This humble daily recording of fragmentary impressions might be thought of as psychosomatic snapshots—deposits of heterogeneous time. They display an embodied sensation or cognition unspooling itself, revealing its essential messiness. These “streams of alarming plasticity” steadily accumulate into dense masses of marks. Forms which, as if through a kind of heliotropism, struggle against their own negation towards the light of reception. This absorption and self-erasure of past images into the abyss of the painterly ground—the material support on which expression is held—becomes an analog for the generative entropy of the earth or “ground” itself, a plenum already containing both everything and nothing; empty and yet full in its essential material richness.

Certain spiritual practitioners refer to the act of breathing as the swinging of a door, imagining the body/ego as mere envelope—an active fulcrum between the esoteric and the exoteric. Sugihara's paintings allow us not to get behind phenomena, but to get between them. They strive to escape from language, to be depictions not of interior states, but evidence of immanent processes which can never be completely assimilated into the domain of visual. In so doing, they disclose the manner in which our perception of the world forms itself through that subtle threshold, that fertile and ambiguous void between subject and object. They are records of a kind of solitude, of a quality of space-time which is simultaneously familiar and remote from the everyday—a grasping towards the origins of all that we experience. Nishida Kitaro has written that “the inside is thoroughly the outside, the outside is thoroughly the inside, from the inside to the outside and from the outside to the inside, the form means to be formed, the world forms itself.” One could say the same of Sugihara's paintings. They aim not at representation or a certain predetermined effect on the viewer, but exist foremost as records of a deeply-felt interior research, which, looked at another way, might be nothing more than the process of simply living.

Reina Sugihara (b. 1988) is a Tokyo-based artist. She received her BA from Tokyo University of the Arts in 2013, and an MA in Painting from the Royal College of Art in London in 2018. She has held solo exhibitions at Arcadia Missa; London (2024), MISAKO & ROSEN; Tokyo (2022) and Lavender Opener Chair; Tokyo (2021). Sugihara has also participated in group exhibitions internationally, including Tokyo Photographic Art Museum; Tokyo, ROH; Jakarta (2024), 47 Canal; New York (2023), Park View/ Paul Soto; Los Angeles, N/A; Seoul, MISAKO & ROSEN (2022).

Sugihara is a member of the artist collective im labor, through which she co-ran an exhibition space in Tokyo called 2x2x2 with Toru Otani.



Digestion (Respirare), 2024

Oil on canvas, artist's frame

64 $\frac{7}{8}$ x 52 $\frac{1}{2}$ x 2 in

164.9 x 133.3 x 5 cm

Unique



Digestion (Respirare) (detail), 2024

Respirare, 2024

Oil on canvas, artist's frame

64 $\frac{7}{8}$ x 52 $\frac{1}{2}$ x 2 in

164.9 x 133.3 x 5 cm

Unique







Manere, 2024

Oil on canvas, artist's frame
36 $\frac{7}{8}$ x 29 $\frac{5}{8}$ x 1 $\frac{3}{4}$ in
93.6 x 75.2 x 4.4 cm

Unique



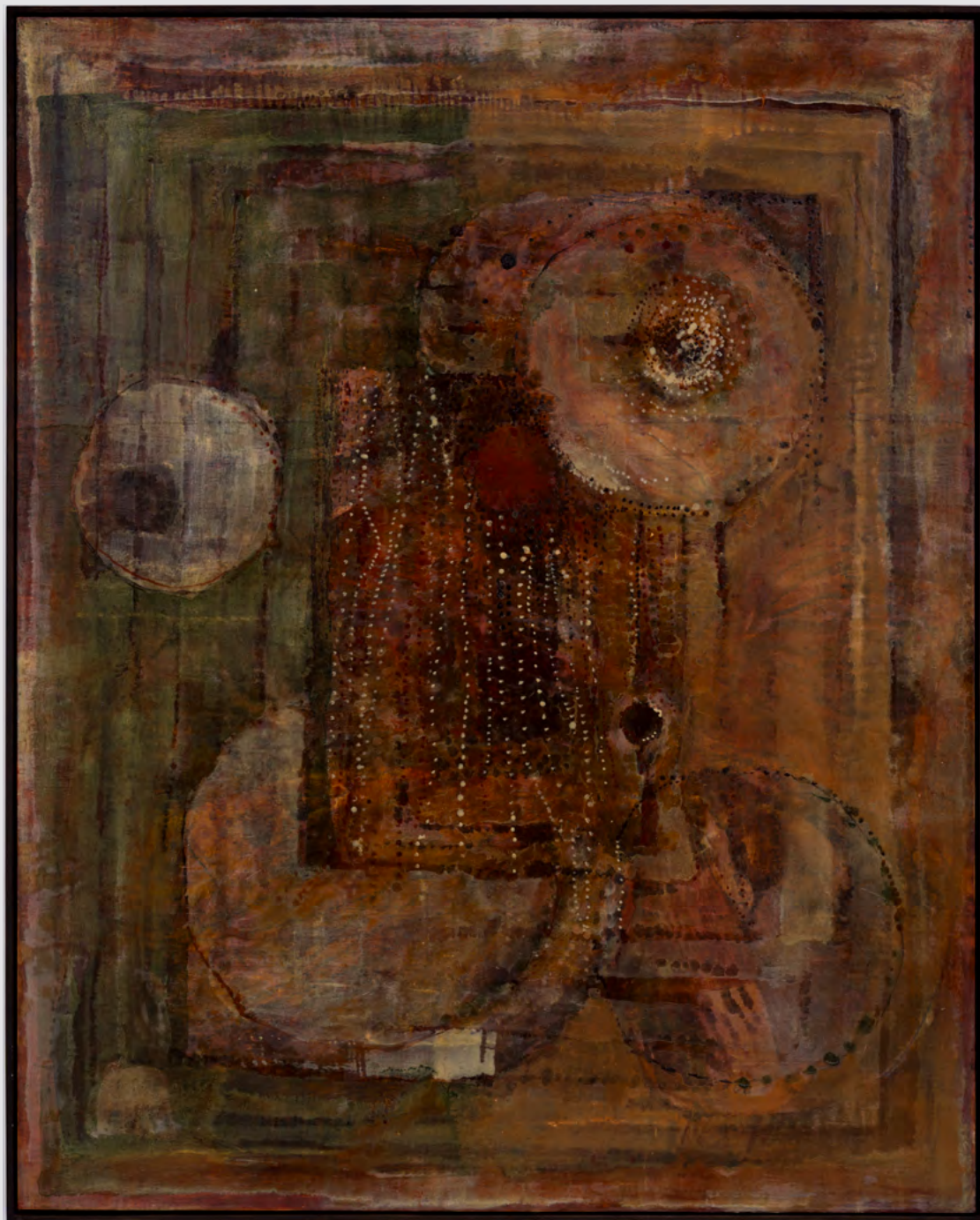
Molt (winter), 2024

Oil on canvas, artist's frame
46 $\frac{7}{8}$ x 29 $\frac{5}{8}$ x 1 $\frac{3}{4}$ in
119.1 x 75.2 x 4.4 cm

Unique



Molt (winter) (detail), 2024



Morning Window, 2024

Oil on canvas, artist's frame

64 $\frac{7}{8}$ x 52 $\frac{1}{2}$ x 2 in

164.9 x 133.3 x 5 cm

Unique



Morning Window (detail), 2024

Brood, 2024

Oil on canvas, artist's frame
36 ¾ x 36 ¾ x 1 ¾ in
93.4 x 93.4 x 4.5 cm

Unique





Brood (detail), 2024

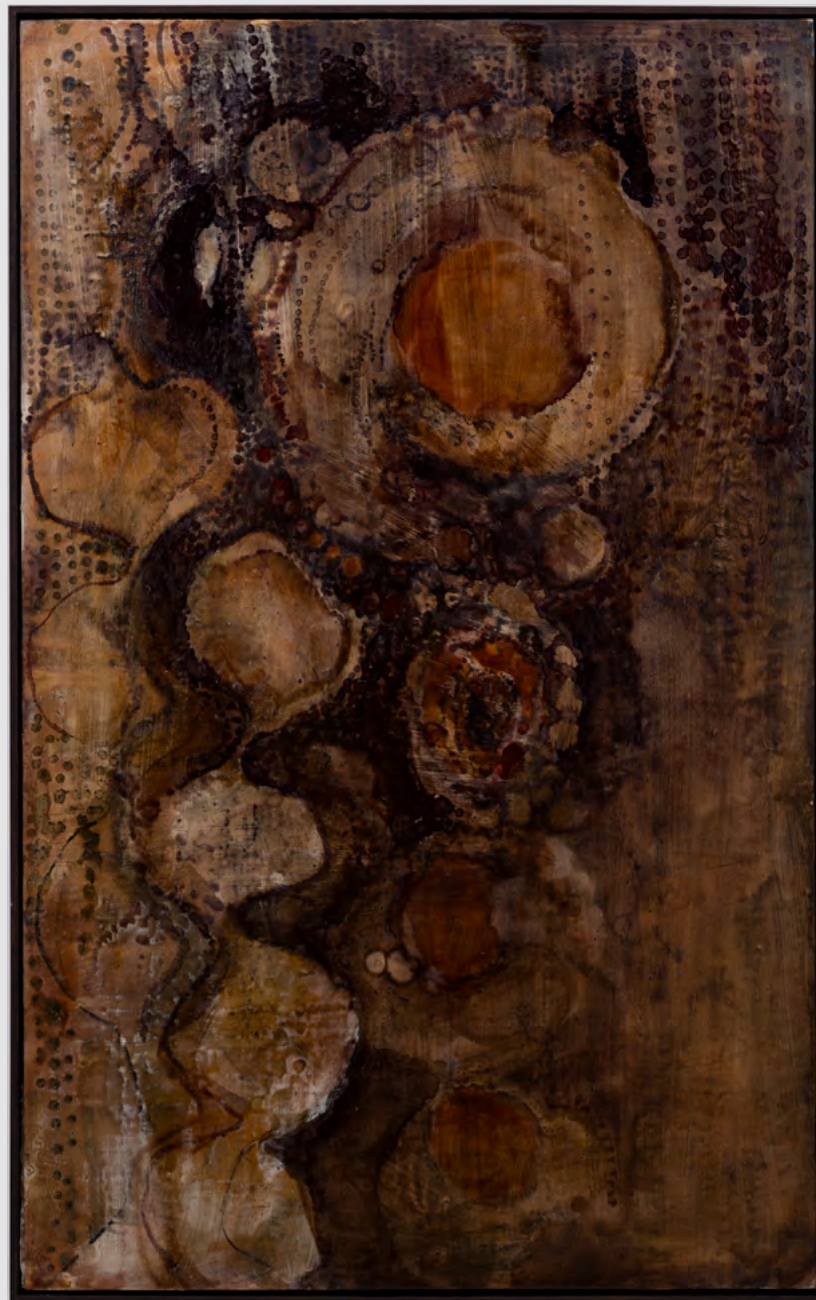
Molt, 2024

Oil on canvas, artist's frame

46 $\frac{7}{8}$ x 29 $\frac{5}{8}$ x 1 $\frac{3}{4}$ in

119.2 x 75.2 x 4.5 cm

Unique





Their View, 2024

Oil on canvas, artist's frame
26 ½ x 32 ½ x 1 ¾ in
67.3 x 82.4 x 4.5 cm

Unique







Quiet Ending, 2024

Oil and wax on canvas, unframed

16 x 12 x $\frac{3}{4}$ in

40.5 x 30.5 x 2 cm

Unique



Perch, 2024

Oil on canvas, artist's frame

21 $\frac{7}{8}$ x 14 $\frac{1}{8}$ x 1 $\frac{3}{4}$ in

55.5 x 35.8 x 4.4 cm

Unique



Perch (detail), 2024



Cuddle, 2024

Oil on canvas, artist's frame

21 7/8 x 14 1/8 x 1 3/4 in

55.5 x 35.8 x 4.4 cm

Unique





Cuddle (detail), 2024



Flock, 2024

Oil on canvas, artist's frame

14 $\frac{1}{8}$ x 21 $\frac{7}{8}$ x 1 $\frac{3}{4}$ in
36 x 55.5 x 4.5 cm

Unique



