



Aliyah Cydonia

Axiomatic Womb to the Proverbial Tomb

DEC 14-FEB 1, 2025

TUREEN

A: where is the wind bound to ?

C: well of course isn't that what we all try to configure? All of us all got the humor.

A: im aware that we began toward tompkins and then we rerouted
to head west what happen

C: she helped me in the moment where i couldn't find it within so im headed
west now. Though it left me at the corner i'm still trying to remember the
moment so i can pull from it. to witness and endure.

A: does she represent the east bound wind

C:

A: is the wind a real-----

C: the witnessing and the enduring is.

A: when por''''''traying the human form wh----y do you se--e it
refe/////rencing or pay////////ing tribute to ancestral history?

C: Do you? to witness and endure.

A: do you really want to be a fly on the wall through their moments and see myself in them?

C: Well of course isn't that what we all try and configure? All of us all
got the humor. to witness and endure.

A: The body is a stand in or- is it a stand in?

C: i like that phrase but, maybe, who knows fr. give me about 10 years to get back to you on that one.

A: For a while i was thinking of the bodies as a life lived, exploration of the corporeal nature of our body in relation to the experiences and the entropic memories ---- but to witness and endure but it doesnt seem to work like that.

C: is that so.

A: The east bound woman helped conjure more ideas. The word 'corporeal' alone. The northbound wind took part. Looking at artists' work. And finding words that i liked.

C: This whole process seems like it has been a self clock ?? i dont know how to word it the repetitiveness and obsessive nature. Is that true?

A: Where does the repetition began to be

C: a emanation of my lack of

A: A hunt for control.

C: Yes but I already explain this.

A: but does she represent the east bound we=ind

C:

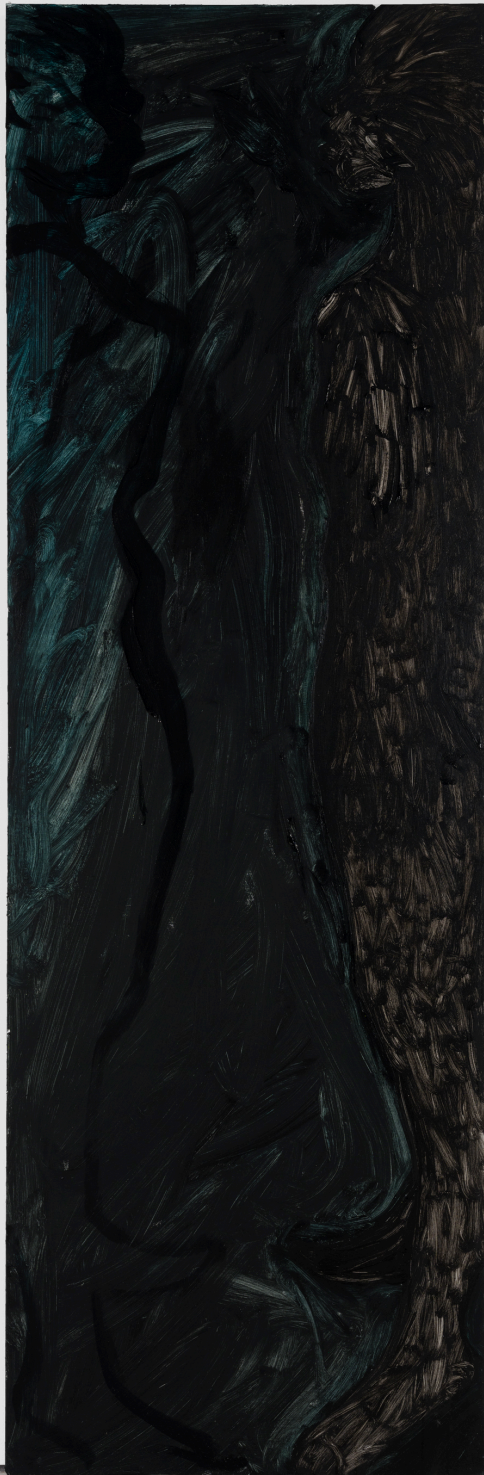
A: and the title?

C: from Richard Powell's book Black Art: A Cultural history.

Where we find glimpses of our great grandmother's hum. Seen through the eyes of our mother as she lies on an outside daybed joining in on the humming and the cicadas singing.







Aliyah Cydonia

Bone Black, 2024

Oil on panel

72 x 24 in.

182.88 x 60.96 cm

AC0008



Bone Black (detail), 2024





Aliyah Cydonia

Eastbound, 2024

Oil on panel

72 x 47¼ in.

182.88 x 120.02 cm

AC0012

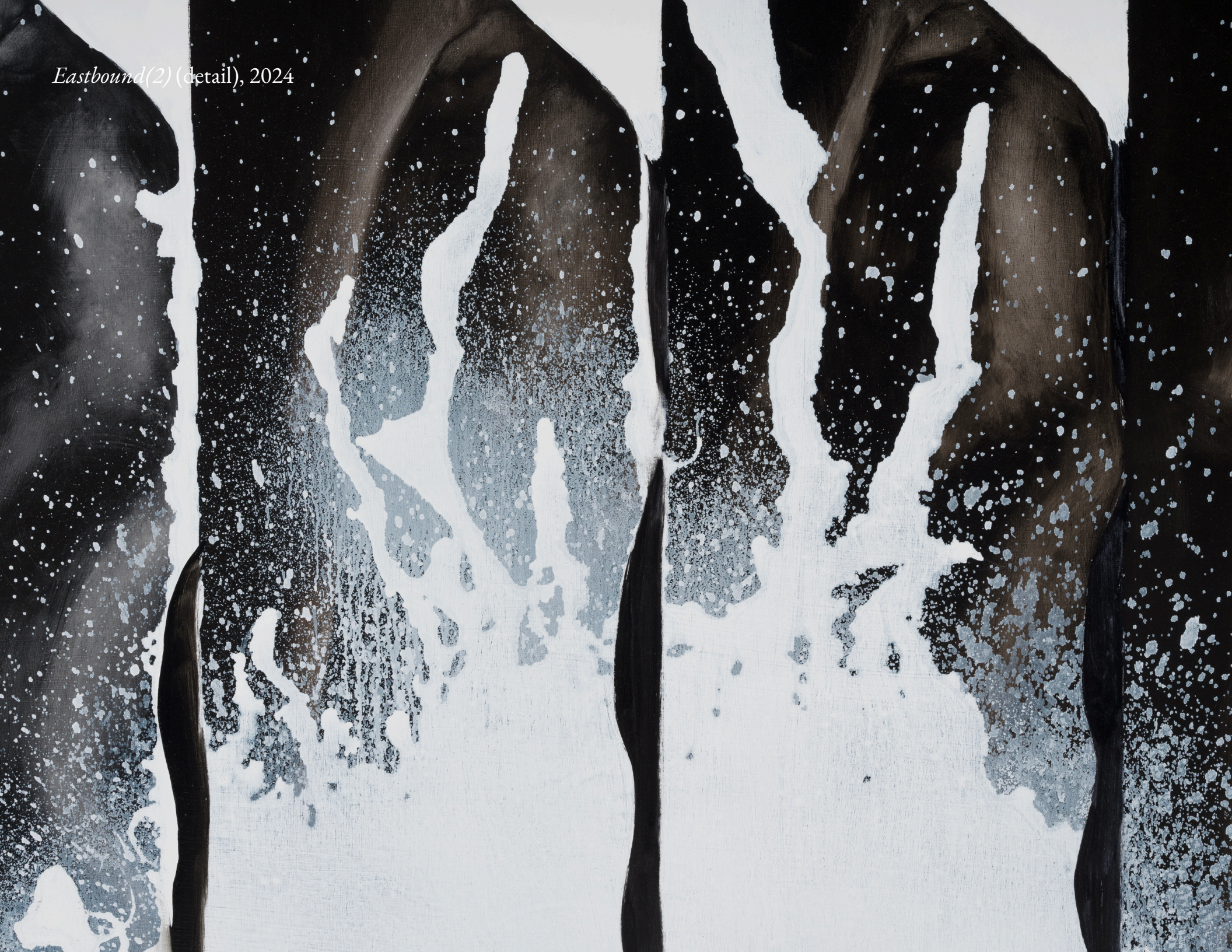


Eastbound (detail), 2024



Aliyah Cydonia
Eastbound(2), 2024
Oil on panel
72 x 47¼ in.
182.88 x 120.02 cm
AC0004

Eastbound(2) (detail), 2024









Aliyah Cydonia

Eastbound (3), 2024

Oil on panel

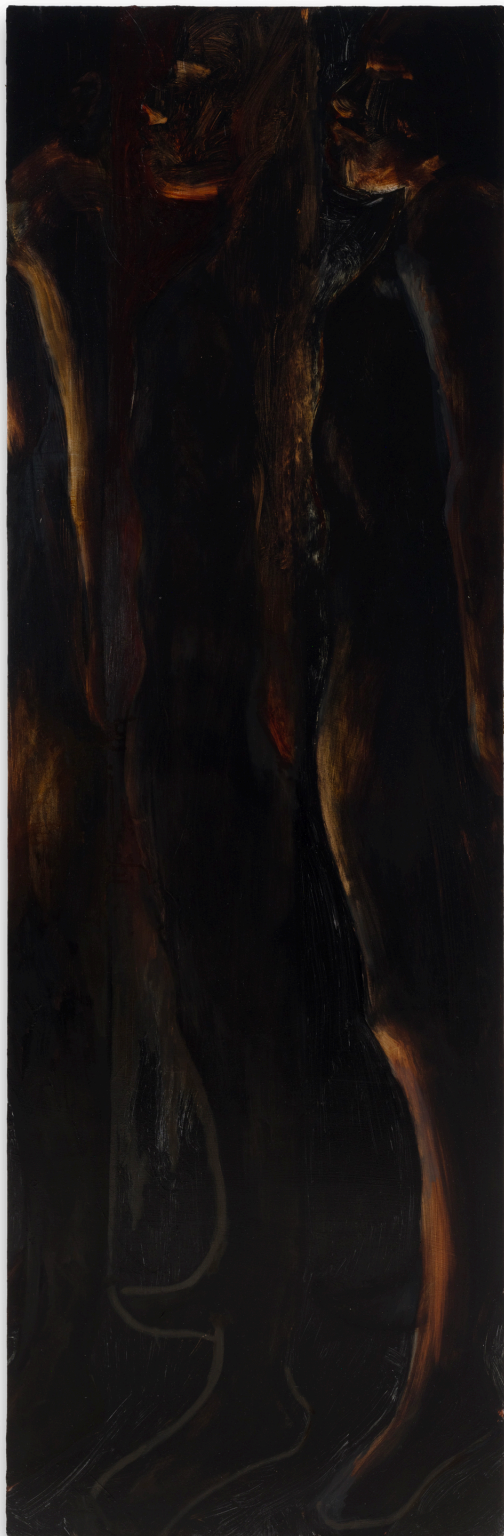
72 x 12 in.

182.88 x 30.48 cm

AC0005



Eastbound(3) (detail), 2024



Aliyah Cydonia

Eastbound (4), 2024

Oil on panel

72 x 24 in.

182.88 x 60.96 cm

AC0009



Eastbound(4) (detail), 2024





Aliyah Cydonia

Eastbound (5), 2024

Oil on panel

72 x 12 in.

182.88 x 30.48 cm

AC0007

Eastbound(5) (detail), 2024





Aliyah Cydonia

Bone Black(3), 2024

Oil on panel

72 x 47¼ in.

182.88 x 120.02 cm

AC0003



Bone Black(3) (detail), 2024





Aliyah Cydonia
Bone Black(2), 2024
Oil on panel
72 x 36 in.
182.88 x 120.02 cm
AC0011

Bone Black(2) (detail), 2024







Aliyah Cydonia
Eastbound (6), 2024
Oil on panel
72 x 24 in.
182.88 x 60.96 cm
AC0002

Eastbound(6) (detail), 2024





Aliyah Cydonia

Drowning in Bell Hooks Words, 2024

Oil on panel

72 x 47¼ in.

182.88 x 120.02 cm

AC0010



Drowning in Bell Hooks Words (detail), 2024



Aliyah Cydonia (b. 2002, Dallas, TX) is an artist that lives and works in Dallas. She recently completed her BFA in Studio Art with an emphasis on painting and drawing from University of North Texas. Her work was recently shown in Fig. 361 at the Belmont Hotel featuring works from Hannah Baskin, Jose Vasquez, and Aliyah Cydonia, curated by Jillian Wendel. She has exhibited works at The MAC, 500X Gallery, SP/N Gallery at the University of Texas at Dallas, and the gallery at Richland DCCCD Campus, and Union Art Gallery at the University of North Texas and Daisha Board Gallery. Axiomatic Womb to the Proverbial Tomb is the the most significant exhibition of her work to date.

TUREEN

*901 West Jefferson Boulevard
Dallas, Texas 75208*