

Sonia Gechtoff

Objects on the New Landscape

Bortolami (The Upstairs at 39 Walker St) 12 Jan – 2 Mar 2024

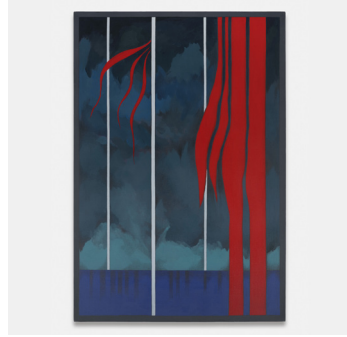
Andrew Kreps Gallery (394 Broadway) 12 Jan – 17 Feb 2024

1



Hiroshige Revisited II, 1988
Acrylic on canvas
55 x 39 in (139.5 x 100 cm)

2



Streamers II, 1989
Acrylic on canvas
45 x 31 in (114.5 x 78.5 cm)

3



Devouring Wave, 1984
Acrylic and graphite on
paper mounted to linen
49 x 40 ½ in
(124.5 x 102.9 cm)

4



Big Red Rock in the Sea, 1984
Acrylic and graphite on
paper
48 x 40 ½ in (123 x 103 cm)

5



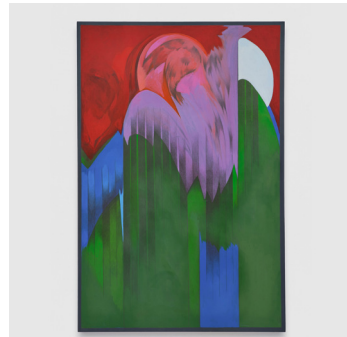
Lucia and the Wave, 1961-62
Oil on canvas
50 ½ x 54 ½ in
(128 x 138.5 cm)

6



Red Map, 1961
Oil on canvas
20 x 20 ⅛ in (51 x 51 cm)

7



Moon Rising, 1989
Acrylic and graphite on
canvas
60 ¼ x 40 ¼ in (153 x 102 cm)

8



Untitled, 2004
Acrylic and graphite on
board
Framed: 20 1/2 x 16 1/2 in
(52.1 x 41.9 cm)

Sonia Gechtoff

Objects on the New Landscape

Bortolami (The Upstairs at 39 Walker St) 12 Jan – 2 Mar 2024

Andrew Kreps Gallery (394 Broadway) 12 Jan – 17 Feb 2024

9



Untitled, 2004
Acrylic and graphite on
board
Framed: 20 ½ x 16 ½ in
(52 x 42 cm)

Continued at Andrew Kreps Gallery



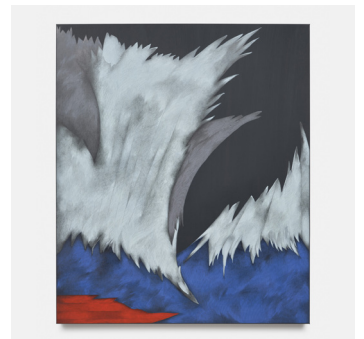
Kynance Cove, 1984 Acrylic
and graphite on paper
mounted to linen
49 x 40 in (124.5 x 101.5 cm)



*Untitled (Round Icon
Collage), 1962*
Acrylic, pastel, graphite on
paper
Framed: 29 ¾ x 29 ¾ in
(75.5 x 75.5 cm)



Untitled, 1986
Acrylic and graphite on
paper mounted to linen
37 ½ x 45 in (95.5 x 114.5 cm)



Ghost Waves IV, 1984
Acrylic and graphite on
paper mounted to linen
48 x 40 ½ in (122 x 103 cm)