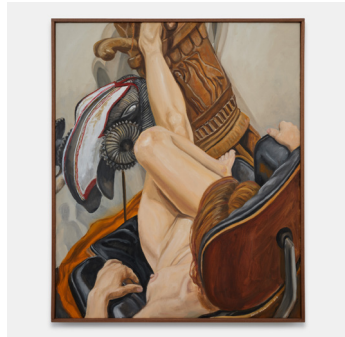


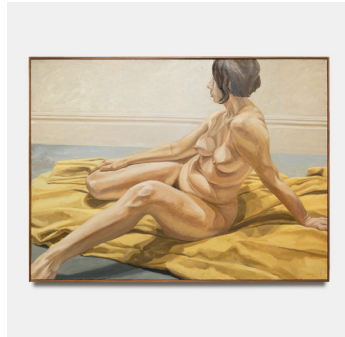
Philip Pearlstein
Figures, Props, Objects, and other things
8 Mar–27 April 2024
39 Walker



Seated Male Nude, 1963
Oil on canvas
30 ¾ x 26 ¾ x 1 ½ in
(78 x 68 x 4 cm)



Model on Eames Chair with African Drum and Mask, 2018
Oil on canvas
34 ¾ x 28 ¾ x 1 ¾ in
(88.5 x 73 x 4.5 cm)



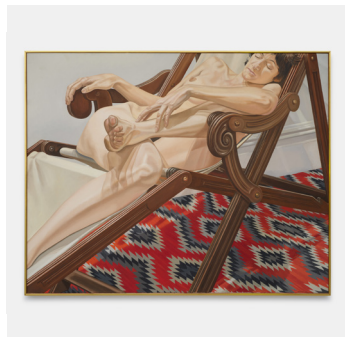
Female Nude on Yellow Drape, 1965
Oil on canvas
55 x 72 ½ x 2 ¼ in
(140 x 184.5 x 6 cm)



Reclining Nude, 1969
Sepia on paper
23 ¼ x 31 ½ x 2 in
(59 x 80 x 5 cm)



Two Models Lying on Floor, 1964
Pencil on paper
15 ½ x 18 ½ x 2 in
(39.5 x 47 x 5 cm)



Female Model on Deck Chair, 1978
Oil on canvas
49 x 61 x 1 ½ in
(124.5 x 155 x 4 cm)



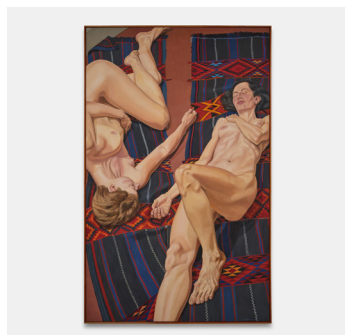
Male Model, Profile, 1986
Charcoal on paper
23 ¾ x 32 x 2 in
(60.5 x 81.5 x 5 cm)



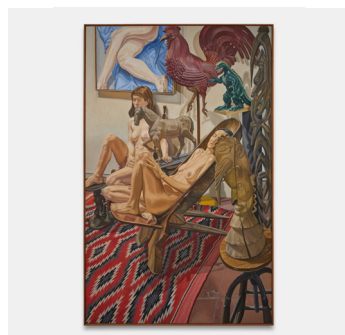
Study for "Nude on a Dahomey", 1976
Pencil on paper
29 ½ x 25 ¾ x 2 in
(75 x 65.5 x 5 cm)



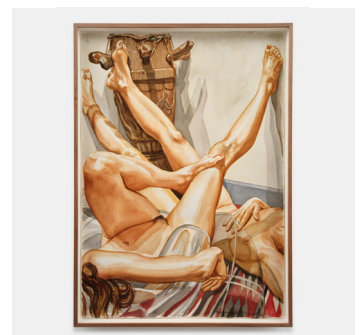
Reclining Nude with Mirror, 1972
Pencil on paper
24 ½ x 30 ½ x 2 in
(62.5 x 77.5 x 5 cm)



Two Models with Bedouin Rug, 1987
Oil on canvas
97 x 61 x 2 in
(246.5 x 155 x 5 cm)

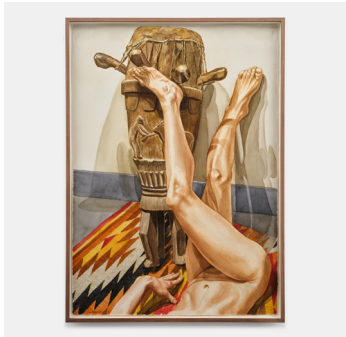


Models with Godzilla, Etc., 1990
Oil on canvas
97 x 61 x 1 ½ in
(246.5 x 155 x 4 cm)

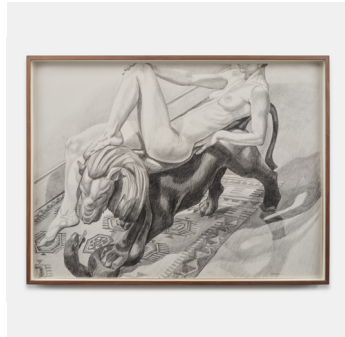


Two Models on Blow-Up Chair with Old African Drum, 1999
Watercolor on paper
42 ¾ x 30 ¾ x 2 ¾ in
(108.5 x 78 x 7 cm)

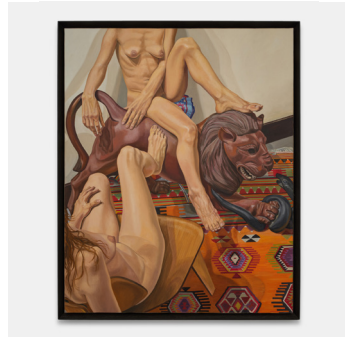
Philip Pearlstein
Figures, Props, Objects, and other things
8 Mar–27 April 2024
39 Walker



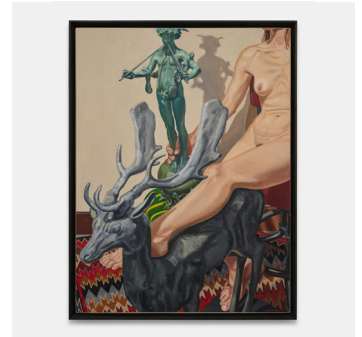
Legs with African Drum, 1997
Watercolor on paper
43 x 31 x 1 3/4 in
(109 x 79 x 4.5 cm)



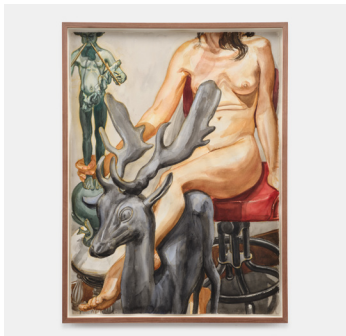
Female Reclining on Lion, 1991
Pencil on paper
31 1/2 x 41 1/2 x 2 in
(80 x 105.5 x 5 cm)



Two Models with Luna Park Lion, 2003
Oil on canvas
62 1/2 x 50 3/4 x 2 1/4 in
(159 x 129 x 6 cm)



Nude with Lead Stag and Universal Pan, 2009
Oil on canvas
50 3/8 x 38 3/8 x 2 in
(128 x 97.5 x 5 cm)



Nude with Lead Stage and Universal Pan, 2009
Watercolor on paper
31 1/2 x 23 3/4 x 2 in
(80 x 60.5 x 5 cm)