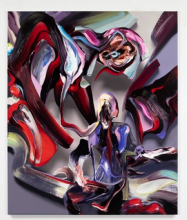


Petzel

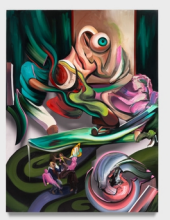
Pieter Schoolwerth
Supporting Actor
September 5 - October 26, 2024



The Last Song (Supporting Actor #14)
2024
Oil, acrylic, and inkjet on canvas
85 1/2 x 112 3/4 in
217.2 x 286.4 cm
PS 24/028



Realy (sic) (Supporting Actor #10)
2024
Oil, acrylic, and inkjet on canvas
70 1/4 x 58 in
178.4 x 147.3 cm
PS 24/031



Behind the World (Supporting Actor #4)
2024
Oil, acrylic, and inkjet on canvas
95 3/4 x 72 1/4 in
243.2 x 183.5 cm
PS 24/007



SPLOOOSH! (Supporting Actor #17)
2024
Oil, acrylic, and inkjet on canvas
52 x 44 in
132.1 x 111.8 cm
PS 24/035



Green Loner with a Dog (Supporting Actor #11)
2024
Oil, acrylic, and inkjet on canvas
67 3/4 x 58 in
172.1 x 147.3 cm
PS 24/036



Mantis Descends Into the Cranial Layer of StainMan (Supporting Actor #3)
2024
Oil, acrylic, and inkjet on canvas
72 1/4 x 90 in
183.5 x 228.6 cm
PS 24/004

Petzel



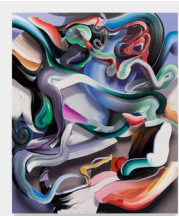
Is This Real? (The Apotheosis of StainMan) (Supporting Actor #13)
2024
Oil, acrylic, and inkjet on canvas
119 1/2 x 89 3/4 in
303.5 x 228 cm
PS 24/027



Lost Painting of an Abstract Configuration of Mermaids (Supporting Actor #18)
2024
Oil, acrylic, and inkjet on canvas
82 3/4 x 97 in
210.2 x 246.4 cm
PS 24/037



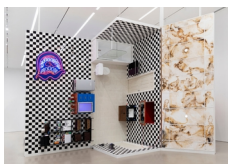
OpenWorld (Supporting Actor #12)
2024
Oil, acrylic, and inkjet on canvas
54 x 65 1/4 in
137.2 x 165.7 cm
PS 24/033



Sapience and Chill (Supporting Actor #15)
2024
Oil, acrylic, and inkjet on canvas
83 x 68 1/2 in
210.8 x 174 cm
PS 24/029



FlashBack: Noone Believes Anything, and They Believe Everything (Supporting Actor #6)
2024
Oil, acrylic, and inkjet on canvas
96 x 78 3/4 in
243.8 x 200 cm
PS 24/006



Supporting Actor
2024
Architectural scale model of domestic bathroom with mixed-media components, hand-painted celotex, custom neon, and accompanying video "Supporting Actor"
192 x 262 x 121 in
487.7 x 665.5 x 307.3 cm
PS 24/018

Petzel



Supporting Actor
2024
Custom neon with acrylic backing
46 x 48 x 8 in
116.8 x 121.9 x 20.3 cm
PS 24/024



Relief Router C6 (Noone Believes Anything, and They Believe Everything), 2024
2024
CNC-routed Sintra in custom frame with 1/4" input plug
21 1/2 x 17 1/2 x 5 1/2 in
54.6 x 44.5 x 14 cm
PS 24/023



Relief Router A3 (Mantis Descends Into the Cranial Layer of StainMan)
2024
CNC-routed Sintra in custom frame with 1/4" input plug
17 1/2 x 21 1/2 x 5 in
44.5 x 54.6 x 12.7 cm
PS 24/019



Relief Router B7 (Heckling the Jester)
2024
CNC-routed Sintra in custom frame with 1/4" input plug
21 1/2 x 25 1/2 x 5 3/4 in
54.6 x 64.8 x 14.6 cm
PS 24/022



Relief Router E14 (The Last Song)
2024
CNC-routed Sintra in custom frame with 1/4" input plug
19 1/2 x 25 1/4 x 6 1/2 in
49.5 x 64.1 x 16.5 cm
PS 24/020

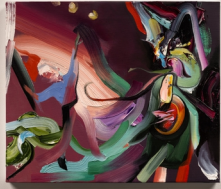


Relief Router D10 (Realy [sic])
2024
CNC-routed Sintra in custom frame with 1/4" input plug
25 1/2 x 21 1/2 x 6 in
64.8 x 54.6 x 15.2 cm
PS 24/021

Petzel



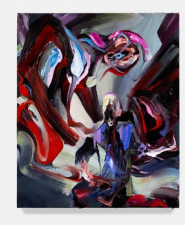
Texture Tile #6 (Noone Believes Anything, and They Believe Everything)
2023
Oil on linen
20 x 16 in
50.8 x 40.6 cm
PS 24/009



Texture Tile #7 (Heckling the Jester)
2024
Oil on linen
20 x 24 in
50.8 x 61 cm
PS 24/010



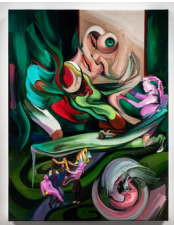
Texture Tile #3 (Mantis Descends Into the Cranial Layer of StainMan)
2023
Oil on linen
16 x 20 in
40.6 x 50.8 cm
PS 24/038



Texture Tile #10 (Realy [sic])
2024
Oil on linen
24 x 20 in
61 x 50.8 cm
PS 24/041



Texture Tile #14 (The Last Song)
2024
Oil on linen
18 x 24 in
45.7 x 61 cm
PS 24/045



Texture Tile #4 (Behind the World)
2023
Oil on canvas
24 x 18 in
61 x 45.7 cm
PS 24/012

Petzel



Supporting Actor

2024

4K video with sound by Aaron Dilloway

10:48 min (looped)

Dimensions Variable

Installed at Petzel Gallery:

Edition of 5 + 3AP

PS 24/026