

既然我的爱已耗尽 (影像-剧目)
And since my love is spent (an image-repertoire)

策展人 Curator:

张耀南 Eugene Yiu Nam Cheung

艺术家 Artists:

罗瑞·康 Lotus L. Kang

马琳·卡尔松 Maren Karlson

山姆·利普 Sam Lipp

潘岱静 Pan Daijing

凯·瓦西科夫斯基 Kai Wasikowski

展期 Duration:



2025.1.10-2.28

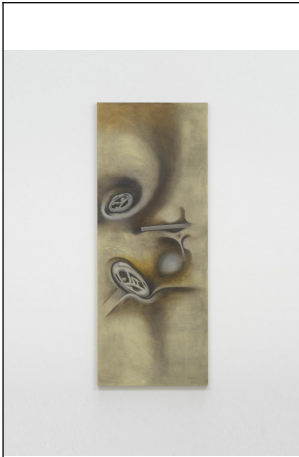
天线的线 Antenna-tenna

上海市静安区曲阜路9弄B1层7号

B1-7, 9 Qufu Road, Jing'an, Shanghai

Captions:

	<p>Sam Lipp 山姆·利普 <i>Gaslight</i>, 2023 《煤气灯》, 2023 Oil on steel, screws 钢版油画, 螺丝 68.6 x 55.9 cm</p>
	<p>Kai Wasikowski 凯·瓦西科夫斯基 <i>Bounded in a Nutshell / King of Infinite Space</i>, 2023 《关禁在果壳里 / 广袤宇宙之王》, 2023 Inkjet print on cotton rag paper 纯棉照片纸上喷墨式打印 150 x 240 cm</p>



Maren Karlson

马琳·卡尔松

Staub (Störung) 7, 2024

Oil and graphite on linen

亚麻布面上油彩和石墨

213 x 83 cm



Maren Karlson

马琳·卡尔松

Staub (Störung) 6, 2024

Oil and graphite on linen

亚麻布面上油彩和石墨

43 x 25 cm



Lotus L. Kang

罗瑞·康

Molt (Woodridge-New York-Shanghai-), 2024

《蜕变（伍德里奇-纽约-上海）》，2024

Tanned and unfixed film (continually sensitive), spherical magnets, steel tubular mount, one cast aluminum kelp knot

晒制与未定影胶片（持续感光），球形磁铁，钢制管状卡口

Installation dimensions / 展示尺寸

292 x 127 x 21 cm



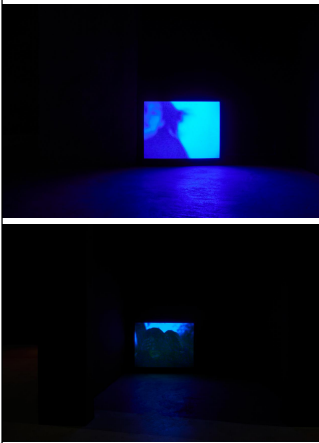
	<p>Lotus L. Kang 罗瑞·康</p> <p><i>Molt (New York-Woodridge-Shanghai), 2024</i> 《蜕变（纽约-伍德里奇-上海）》，2024</p> <p>Tanned and unfixed film (continually sensitive), spherical magnets, steel tubular mount 晒制与未定影胶片（持续感光），球形磁铁，钢制管状卡口</p> <p>Installation dimensions / 展示尺寸 292 x 127 x 21 cm</p>
	<p>Lotus L. Kang 罗瑞·康</p> <p><i>Mesoderm (Azaleas III), 2024</i> 《中胚层（杜鹃花 III）》，2024</p> <p>Photographic paper, darkroom chemicals, oil pastel, cast aluminum anchovies, nylon, nail 照片纸，暗房化学品，彩铅，铝制凤尾鱼，尼龙，钉子</p> <p>Approx. 22.5 x 16 x 1.5 in (57 x 41 x 4 cm)</p>
	<p>Pan Daijing 潘岱静</p> <p><i>Untitled, 2023–2024</i> 《无题》，2024–2024</p> <p>Two channel video installation 双通道影像装置</p>

Image courtesy to artists and Antenna Space
图片致谢艺术家及天线空间

媒体联络 Media contact:
media@antenna-space.com