

CARLOS/ISHIKAWA

Carlos/Ishikawa presenting Sable Elyse Smith

Condo London 2025

18 Jan-15 Feb 2025

About the Artist

Sable Elyse Smith (b. 1986, Los Angeles) lives and works in NYC. Her work has been exhibited at The Museum of Modern Art (MoMA); Solomon R. Guggenheim Museum; 59th Venice Biennale, Venice; New Museum, NY; amongst others.

Image Credits

Carlos/Ishikawa requests to receive a digital copy or scan (& physical copy where relevant) of any article or publication in which images are reproduced for our archive.

Reproductions must include captions and credits as specified below.
The artist and Carlos/Ishikawa retains all copyright of images.

Further image usage may be requested from Carlos/Ishikawa on a case by case basis.

Please contact saskia@carlosishikawa.com with any questions.

Artwork Images



Sable Elyse Smith, *LAUGH TRACK, OR WHO'S THAT PEEKING IN MY WINDOW*, 2021

High-definition video, color, sound, 7:56 mins, Edition of 3

© **Sable Elyse Smith** 2025, courtesy the artist and Carlos/Ishikawa, London and Regen Projects, LA.



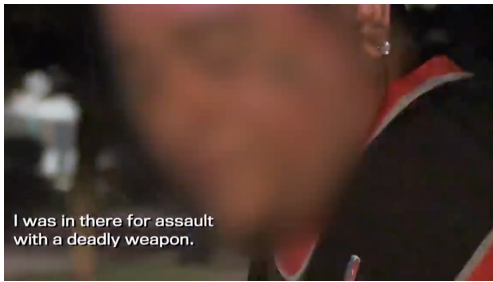
Sable Elyse Smith, *LAUGH TRACK, OR WHO'S THAT PEEKING IN MY WINDOW*, 2021

High-definition video, color, sound, 7:56 mins, Edition of 3

© **Sable Elyse Smith** 2025, courtesy the artist and Carlos/Ishikawa, London and Regen Projects, LA.



Sable Elyse Smith, *LAUGH TRACK, OR WHO'S THAT PEEKING IN MY WINDOW*, 2021
High-definition video, color, sound, 7:56 mins, Edition of 3
© **Sable Elyse Smith** 2025, courtesy the artist and Carlos/Ishikawa, London and Regen Projects, LA.



Sable Elyse Smith, *LAUGH TRACK, OR WHO'S THAT PEEKING IN MY WINDOW*, 2021
High-definition video, color, sound, 7:56 mins, Edition of 3
© **Sable Elyse Smith** 2025, courtesy the artist and Carlos/Ishikawa, London and Regen Projects, LA.