

Back Grounds: Impressions Photographiques (2) Organized with
Olivier Renaud-Clément
June 28 – August 15, 2014
Main Gallery



CHARGESHEIMER

Harlekinade

1961

vintage gelatin silver chemigram

12 1/8 x 9 5/8 inches (30.8 x 24.4 cm)

Plexi frame: 20 1/2 x 18 x 1 7/8 inches (52.1 x 45.7 x 4.8 cm)

ARG# CC1961-001



CHARGESHEIMER

Untitled

1961

vintage gelatin silver chemigram

15 5/8 x 11 3/4 inches (39.7 x 29.8 cm)

Plexi frame: 25 x 21 x 1 7/8 inches (63.5 x 53.3 x 4.8 cm)

ARG# CC1961-002



CHARGESHEIMER

Voodoo

1961

vintage gelatin silver chemigram

15 1/2 x 11 5/8 inches

(39.4 x 29.5 cm)

Plexi frame: 24 7/8 x 21 x 1 7/8 inches (63.2 x 53.3 x 4.8 cm)

ARG# CC1961-003



ADOLPHE HUMBERT DE MOLARD

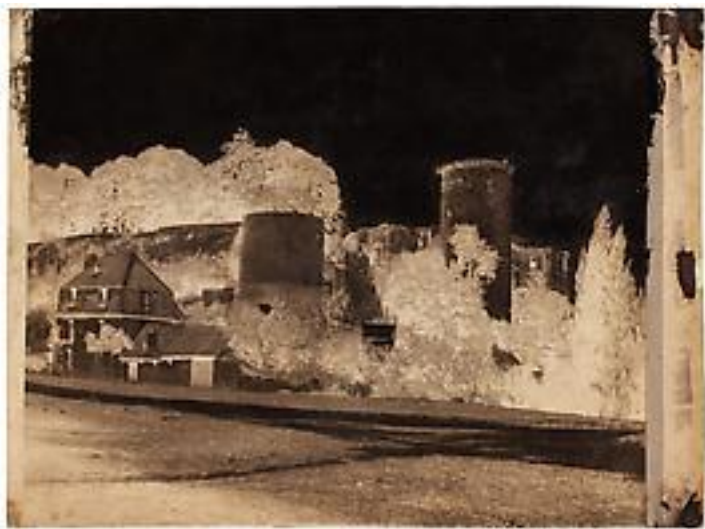
Untitled

1848

paper negative

10 x 7 3/8 inches (25.4 x 18.7 cm)

ARG# HMA1848-002



ADOLPHE HUMBERT DE MOLARD

Untitled

1848

paper negative

7 1/4 x 9 3/4 inches (18.4 x 24.8 cm)

ARG# HMA1848-003



ADOLPHE HUMBERT DE MOLARD
Untitled
1848
paper negative
7 1/4 x 9 3/4 inches (18.4 x 24.8 cm)
ARG# HMA1848-004



ADOLPHE HUMBERT DE MOLARD
Untitled
1848
paper negative
7 x 9 1/2 inches (17.8 x 24.1 cm)
ARG# HMA1848-005



ADOLPHE HUMBERT DE MOLARD

Untitled

1848

paper negative

7 1/4 x 9 7/8 inches (18.4 x 25.1 cm)

ARG# HMA1848-006



LIZ DESCHENES

bracket (new york) 1

2014

Unique silver-toned, black and white photogram
in artist's frame

Frame: 84 x 5 1/2 inches (213.4 x 14 cm)

ARG# WEJ2014-001



LIZ DESCHENES

bracket (new york) 3

bracket (new york) 4

2014

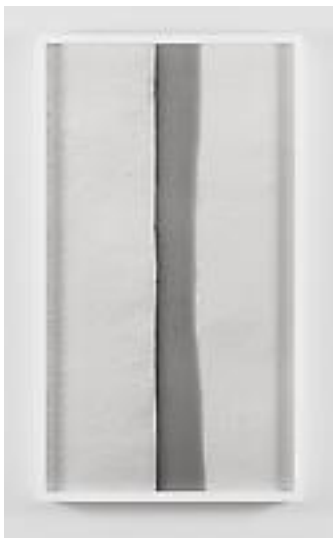
Unique silver-toned, black and white photograms
in artist's frame

Overall dimensions vary with installation

Two parts, each: 44 1/4 x 17 x 4 3/8 inches (112.4 x 43.2 x 11.1 cm)

Overall as installed at the gallery: 44 1/4 x 52 1/2 x 4 3/8 inches (112.4 x 133.4 x 11.1 cm)

ARG# DL2014-005



MARTIN D'ORGEVAL

Linea Alba I

2014

gelatin silver print with artist frame

32 1/4 x 18 1/2 x 1 15/16 inches

(81.9 x 47 x 4.9 cm)

Edition of 5 with 2AP

ARG# DOM2014-001



MARTIN D'ORGEVAL

Linea Alba II

2014

gelatin silver print with artist frame

26 15/16 x 17 1/8 x 1 15/16 inches

(68.4 x 43.5 x 4.9 cm)

Edition of 5 with 2AP

ARG# DOM2014-002



MARTIN D'ORGEVAL

Linea Alba IX

2014

gelatin silver print with artist frame

25 5/8 x 17 1/8 x 1 15/16 inches

(65.1 x 43.5 x 4.9 cm)

Edition of 5 with 2AP

ARG# DOM2014-009



MARTIN D'ORGEVAL

Screenshot (Black Mirror) #1

2014

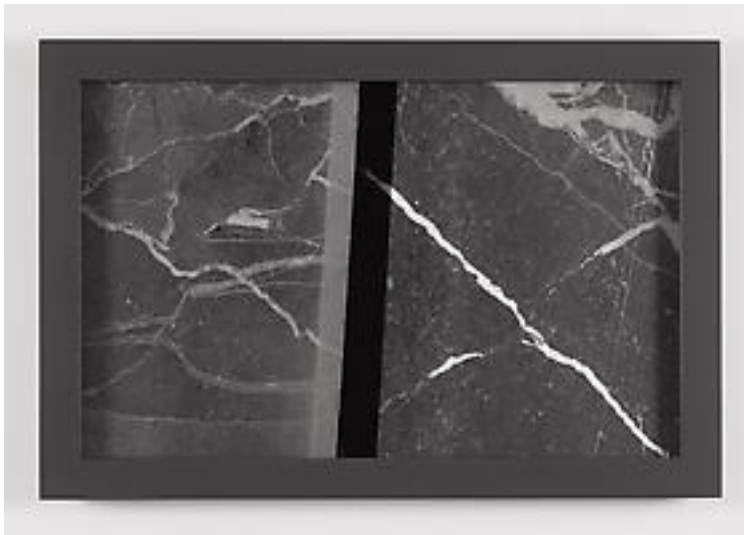
gelatin silver print with artist frame

Silver print: 12.8 x 20.5 inches (32.5 x 52 cm)

Frame: 15 3/4 x 23 3/8 inches (40 x 59.4 cm)

Edition of 5 with 2AP

ARG# DOM2014-010



MARTIN D'ORGEVAL

Screenshot (Diagonal Grey) #1

2014

gelatin silver print with artist frame

Silver print: 12.8 x 20.5 inches (32.5 x 52 cm)

Frame: 15 3/4 x 23 3/8 inches (40 x 59.4 cm)

Edition of 5 with 2AP

ARG# DOM2014-012



GAYLEN GERBER

Untitled (Clear Sky)

1991

gelatin silver print, Plexiglas frame fabricated from a souvenir from Daniel Buren's *Crossing Through the Colors*, a work in situ, 2006

31 3/8 x 31 3/8 inches (79.5 x 79.5 cm)

ARG# GEG1991-001



GAYLEN GERBER

Untitled (Clear Sky)

1991

Gelatin silver print, Plexiglas frame fabricated from a souvenir from Daniel Buren's *Crossing Through the Colors*, a work in situ, 2006

31 3/8 x 31 3/8 inches (79.5 x 79.5 cm)

ARG# GEG1991-002



GAYLEN GERBER

Clear Sky/House

1995-1996

Gelatin silverprint, charcoal, Plexiglas frame

31 x 31 inches (78.8 x 78.8 cm)

ARG# GEG1996-001



GAYLEN GERBER

Untitled (Clear Sky)

1992

Gelatin Silver photograph

31 15/16 x 31 15/16 inches (81.1 x 81.1 cm)

ARG# GEG1992-001



GAYLEN GERBER

Clear Sky/Flower

1997

Ilfachrome print, Plexiglas frame fabricated from a souvenir from Daniel Buren's Crossing Through the Colors, a work in situ, 2006

31 3/8 x 31 3/8 inches (79.5 x 79.5 cm)

ARG# GEG1997-001



GAYLEN GERBER

Clear Sky/Flower

1997

Ilfachrome print, charcoal, Plexiglas frame

31 x 31 inches (78.8 x 78.8 cm)

ARG# GEG1997-002



GAYLEN GERBER

Clear Sky/Garden Addition

1997

Ilfachrome print, charcoal, Plexiglas frame

31 x 31 inches (78.8 x 78.8 cm)

ARG# GEG1997-003



GAYLEN GERBER

Clear Sky/Green Area

1998

Ilfachrome print, Plexiglas frame fabricated from a souvenir from Daniel Buren's *Crossing Through the Colors*, a work in situ, 2006

31 3/8 x 31 3/8 inches (79.5 x 79.5 cm)

ARG# GEG1998-001



GAYLEN GERBER

Backdrop/Back grounds: Impressions Photographiques (2)

2014

background paper, aluminum pins

Dimensions vary with installation

Edition of 6

ARG# GEG2014-001



SHERRIE LEVINE

Equivalents: After Stieglitz 1–18

2006

Epson inkjet prints

18 images, each: 19 x 13 inches (48.3 x 33 cm)

framed: 20 3/4 x 14 3/4 x 1 1/4 in. (52.7 x 37.5 x 3.2 cm)

Edition of 12, 3 AP

ARG# LSH2006-001



ALFRED STIEGLITZ

Equivalent (Songs of the Sky P2)

1923

vintage gelatin silver print mounted to board and mounted to larger board

image, paper and mount: 4 5/8 x 3 5/8 inches (11.7 x 9.2 cm)

board: 13 1/2 x 10 5/8 inches (34.3 x 27 cm)

ARG# STA1923-003

© 2014 Estate of Alfred Stieglitz / Artists Rights Society (ARS), New York



ALFRED STIEGLITZ

Songs of the Sky

1924

Gelatin silver print

3 5/8 x 4 9/16 inches (9.2 x 11.6 cm)

Private Collection

ARG# STA1924-001

© 2014 Estate of Alfred Stieglitz / Artists Rights Society (ARS), New York



ALFRED STIEGLITZ

Equivalent - ES2

Late 1920s

Gelatin silver print

Sheet: 4 1/2 x 3 9/16 inches (11.4 x 9 cm)

Mount: 12 7/16 x 9 11/16 inches (31.6 x 24.6 cm)

Philadelphia Museum of Art: From the Collection of Dorothy Norman, 1985

ARG# STA1925-001

© 2014 Estate of Alfred Stieglitz / Artists Rights Society (ARS), New York



ALFRED STIEGLITZ

Equivalent

1925

Gelatin silver print

4.65 x 3.62 inches (11.8 x 9.2 cm)

Collection of George Eastman House (Part purchase and part gift from Georgia O'Keefe)

ARG# STA1925-002

© 2014 Estate of Alfred Stieglitz / Artists Rights Society (ARS), New York



ALFRED STIEGLITZ

Equivalent

1925

Gelatin silver print

3.66 x 4.69 inches (9.3 x 11.9 cm)

Collection of George Eastman House (Part purchase and part gift from Georgia O'Keefe)

ARG# STA1925-003

© 2014 Estate of Alfred Stieglitz / Artists Rights Society (ARS), New York



ALFRED STIEGLITZ

Equivalent

1929

Gelatin silver print mounted to board

4 3/4 x 3 5/8 inches (12.1 x 9.2 cm)

ARG# STA1927-003

© 2014 Estate of Alfred Stieglitz / Artists Rights Society (ARS), New York



ALFRED STIEGLITZ

Equivalents

1927

gelatin silver print

3 11/16 x 4 5/8 inches (9.4 x 11.7 cm)

Private Collection

ARG# STA1927-005

© 2014 Estate of Alfred Stieglitz / Artists Rights Society (ARS), New York



ALFRED STIEGLITZ

Equivalent

1925 / 1927

vintage gelatin silver print mounted to board and mounted to larger board

image, paper and mount: 4 5/8 x 3 5/8 inches (11.7 x 9.2 cm)

board: 13 7/8 x 10 3/4 inches (35.2 x 27.3 cm)

ARG# STA1927-006

© 2014 Estate of Alfred Stieglitz / Artists Rights Society (ARS), New York



ALFRED STIEGLITZ

Equivalent HH₁

1929

Gelatin silver print

Image and sheet: 4 3/4 x 3 3/4 inches (12.1 x 9.5 cm)

Mount: 13 1/2 x 10 1/4 inches (34.3 x 26 cm)

Philadelphia Museum of Art: From the Collection of Dorothy Norman, 1997

ARG# STA1929-002

© 2014 Estate of Alfred Stieglitz / Artists Rights Society (ARS), New York



ALFRED STIEGLITZ

Equivalent

1929

Gelatin silver print

4.65 x 3.66 inches (11.8 x 9.3 cm)

Collection of George Eastman House (Part purchase and part gift from Georgia O'Keefe)

ARG# STA1929-005

© 2014 Estate of Alfred Stieglitz / Artists Rights Society (ARS), New York



ALFRED STIEGLITZ

Equivalent

1929

Gelatin silver print

11.8 x 9.2 inches (30 x 23.4 cm)

Collection of George Eastman House (Part purchase and part gift from Georgia O'Keefe)

ARG# STA1929-006

© 2014 Estate of Alfred Stieglitz / Artists Rights Society (ARS), New York



ALFRED STIEGLITZ

Equivalent

1930

Gelatin silver print

4.69 x 3.62 inches (11.9 x 9.2 cm)

Collection of George Eastman House (Part purchase and part gift from Georgia O'Keefe)

ARG# STA1930-001

© 2014 Estate of Alfred Stieglitz / Artists Rights Society (ARS), New York



ALFRED STIEGLITZ

Equivalent

1930

Gelatin silver print

3 5/8 x 4 9/16 inches (9.2 x 11.6 cm)

Private Collection

ARG# STA1930-002

© 2014 Estate of Alfred Stieglitz / Artists Rights Society (ARS), New York



ALFRED STIEGLITZ

Equivalent

1931

Gelatin silver print

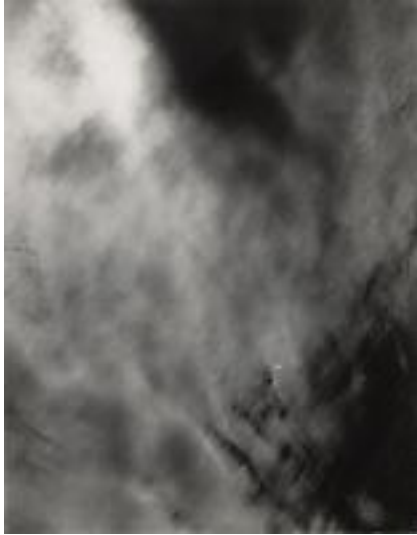
Image and sheet: 3 5/8 x 4 9/16 inches (9.2 x 11.6 cm)

Mount: 13 5/8 x 11 inches (34.6 x 27.9 cm)

Philadelphia Museum of Art

ARG# STA1931-001

© 2014 Estate of Alfred Stieglitz / Artists Rights Society (ARS), New York



ALFRED STIEGLITZ

Equivalent

1931

Gelatin silver print

4.69 x 3.66 inches (11.9 x 9.3 cm)

Collection of George Eastman House (Part purchase and part gift from Georgia O'Keefe)

ARG# STA1931-002

© 2014 Estate of Alfred Stieglitz / Artists Rights Society (ARS), New York



ALFRED STIEGLITZ

Equivalent, Series XX No. 9

1929 (negative); 1932 (print)

Gelatin silver print

Image and sheet: 4 5/8 x 3 5/8 inches (11.7 x 9.2 cm)

Mount: 13 11/16 x 10 7/8 inches (34.8 x 27.6 cm)

Philadelphia Museum of Art: From the Collection of Dorothy Norman, 1967

ARG# STA1932-001

© 2014 Estate of Alfred Stieglitz / Artists Rights Society (ARS), New York



ALFRED STIEGLITZ

Equivalent

1934

Gelatin silver print

Image and sheet: 4 5/8 x 3 5/8 inches (11.7 x 9.2 cm)

Philadelphia Museum of Art: From the Collection of Dorothy Norman, 1967

ARG# STA1934-001

© 2014 Estate of Alfred Stieglitz / Artists Rights Society (ARS), New York



ALFRED STIEGLITZ

Equivalent, Set C₂, No. 4

1929 (negative); 1935 (print)

Gelatin silver print

Image and sheet: 4 5/8 x 3 5/8 inches (11.7 x 9.2 cm)

Philadelphia Museum of Art: From the Collection of Dorothy Norman, 1985

ARG# STA1935-001

© 2014 Estate of Alfred Stieglitz / Artists Rights Society (ARS), New York



JAMES WELLING

Granite Outcrop, Harriman, WY

1992

Toned gelatin silver print

Framed: 23 5/8 x 19 1/2 x 3/4 inches (60 x 49.5 x 1.9 cm) Paper: 11 x 13 7/8 inches (27.9 x 35.2 cm)

Image: 9 3/4 x 11 1/2 inches (24.8 x 29.2 cm)

Edition of 3

ARG# WEJ1992-002



JAMES WELLING

Chemical

2013

Unique chemigram with ink

14 x 11 inches (35.6 x 27.9 cm)

Framed: 20 1/2 x 16 1/2 x 1 1/8 inches (52.1 x 41.9 x 2.9 cm)

ARG# WEJ2013-002



JAMES WELLING

Chemical

2013

Unique chemigram

14 x 11 inches (35.6 x 27.9 cm)

Framed: 20 1/2 x 16 1/2 x 1 1/8 inches (52.1 x 41.9 x 2.9 cm)

ARG# WEJ2013-004



[Click for Additional Views](#)

JAMES WELLING

Chemical

2014

Unique chemigram with acrylic

14 x 11 inches (35.6 x 27.9 cm)

Framed: 20 1/2 x 16 1/2 x 1 1/8 inches (52.1 x 41.9 x 2.9 cm)

ARG# WEJ2014-002



JAMES WELLING

Chemical

2014

Graphite and acrylic on rag paper

14 x 11 inches (35.6 x 27.9 cm)

Framed: 20 1/2 x 16 1/2 x 1 1/8 inches (52.1 x 41.9 x 2.9 cm)

ARG# WEJ2014-003