

# Petzel

***Multi-User Dungeon (MUD)***  
**Curated by Simon Denny**  
**February 21 – March 30, 2024**

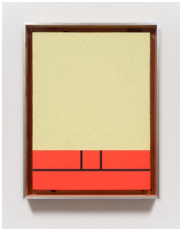
## Front Gallery



Josh Kline  
*Reality Television 19*  
2023  
Nylon flags, polyurethane, epoxy, microfiber, mounting hardware  
28 x 48 3/4 x 5 inches  
71.1 x 123.8 x 12.7 cm  
FP 23/055



Matthias Groebel  
*Untitled (149)*  
1997  
Acrylic on canvas  
37 3/8 x 37 3/8 in  
95 x 95 cm  
FP 24/004



Peter Halley  
*Yellow Cell with Underground Conduit*  
1982  
Acrylic, fluorescent acrylic, phosphorescent acrylic, and Roll-a-Tex on canvas  
The painting is enclosed in a wooden frame behind plexiglass glazing  
56 x 42 in  
142.2 x 106.7 cm  
Frame dimensions: 68 x 42 x 6.75  
FP 24/010

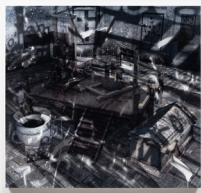


Tishan Hsu  
*Gray-Zone 8*  
2023  
Mixed media on Dura-Lar film, powder coated steel and acrylic sheet artist frame  
27 x 22 3/4 x 1 1/2 in  
68.6 x 57.8 x 3.8 cm  
FP 24/020



Yngve Holen  
*5G AirScale Black*  
2023  
Antenna, resin, flock, metal  
26 x 15 3/8 x 5 1/8 in  
66 x 39 x 13 cm  
YH 24/002

# Petzel



Avery Singer  
*Inquisition dungeon model*  
2024

Acrylic on canvas stretched over wood panel  
75 1/4 x 70 1/4 x 2 1/8 in  
191.1 x 178.4 x 5.4 cm  
FP 24/001



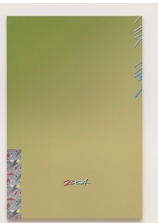
etoy.CORPORATION  
*SHARE-CERTIFICATE No. 162*  
1999/2000

C-print mounted on aluminum  
23 5/8 x 23 5/8 in  
60 x 60 cm  
FP 24/007

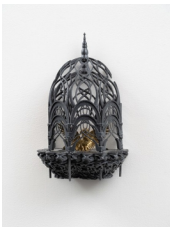


Seth Price  
*Brown Spring*  
2004

Ink-jet on canvas  
27 x 39 x 1 inches  
68.6 x 99.1 x 2.5 cm  
SPR 21/011

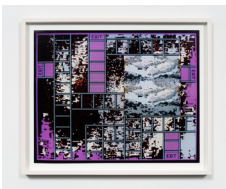


Seth Price  
*Green No.*  
2004  
Giclee on Canvas  
47 x 32 inches;  
119.3 x 81.2 cm  
SPR 02/091



Genevieve Goffman  
*Bird's Nest*  
2022

Brass, nylon  
15 x 9 x 6 inches  
38.1 x 22.9 x 15.2 cm  
FP 23/048



Suzanne Treister  
*Fictional Videogame Stills/Four Exits*  
1991-92/2020

Archival giclée print on Semigloss Photo Paper  
16 x 20 in  
40.6 x 50.8 cm  
Frame: 18 x 22 inches  
FP 23/051

# Petzel



Isabelle Frances McGuire

*Bust2* {“Assassins Creed NPC”, “Normandy”, “New United States Flag”}  
2023

Wax, resin, cotton, chain mail, leather, motion triggered sound device, wood

66 x 15 x 14 inches

167.6 x 38.1 x 35.6 cm

pedestal is 52 x 18 x 17 inches

FP 23/047



Yngve Holen

*Experience After Birth*

2021

Bronze and aluminum

Two parts: 46 x 53 x 46 cm; 85 x 55 x 55 cm (base)

YH 24/001



Harris Rosenblum

*Censer (Mechanical Squonk Mod)*

2023

Vulcanized prosthetic latex, hand wound nichrome wire 0.8 Ohm inductors (alienweave 3 wire pattern), Cotton Bacon brand organic carded cotton, WASP squonk convertible mech atomizer, brass, custom squonk mod adapter, CNC engraved copper plate, 9v batteries, wire, acrylic, paint, motherboard standoffs mechanical switch, hardware

14 x 14 x 8 in

35.6 x 35.6 x 20.3 cm

Pedestal: 36 x 14 x 14 inches

FP 24/005

## Middle Gallery



Matthias Groebel

*Untitled (156)*

1995

Acrylic on canvas

37 3/8 x 37 3/8 in

95 x 95 cm

FP 23/046



Jack Goldstein

*Untitled (Selectric Totems) (I)*

1988-1990

Typed text on paper (10 pages, 1 displayed)

17 x 11 in (each)

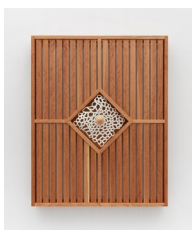
43.2 x 27.9 cm

FP 24/003

# Petzel



Öyvind Fahlström  
*Study for Phase 3 of "The Cold War"*  
1964/68  
Tempera, ink and pencil on paper  
9 5/8 x 13 1/2 in  
24.5 x 34.3 cm  
Framed: 20 3/8 x 24 1/8 in  
FP 24/008



Anicka Yi  
*Edge of Embryology*  
2022  
Cherry wood, teak oil, resin, acrylic paint  
50 x 40 x 5 1/2 inches  
127 x 101.6 x 14 cm  
FP 23/050



Harris Rosenblum  
*Earth and New Earth Mikeu*  
2021  
PLA, Walnut, MDF, Cosmetic Mica, Steel, PVA glue, Cyanoacrylate glue, Raw clay harvested from Wendy's Parking lot during rebuild, acrylic, 4-40 stainless steel set screws, polyurethane varnish  
12 x 19 x 4 in  
30.5 x 48.3 x 10.2 cm  
Pedestal: 36 x 20 x 20 inches  
FP 24/006

## Office

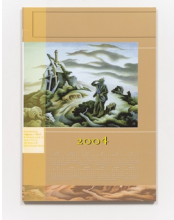


Öyvind Fahlström  
*Skogsspår [Trail of Prints in the Woods]*  
1962  
Waterpaint and India ink on paper  
11 1/2 x 8 1/8 in  
29.2 x 20.7 cm  
Framed: 21 1/8 x 17 5/8 in  
FP 24/009



Suzanne Treister  
*Fictional Videogame Stills/Virtual Wilderness*  
1991-92/2020  
Archival giclée print on Semigloss Photo Paper  
16 x 20 in  
40.6 x 50.8 cm  
Frame: 18 x 22 inches  
FP 24/002

# Petzel



Seth Price  
*Brown Benton*  
2004  
Ink-jet on canvas  
48 x 33 inches  
121.9 x 83.8 cm  
SPR 16/041