




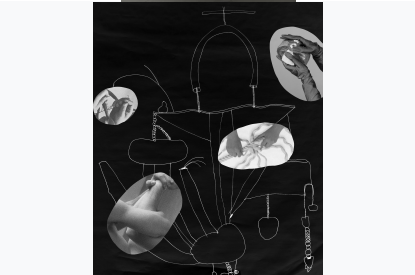


IMAGE	ARTIST	Title, Year	Medium	Artwork Dimensions HWD
	Leia Genis	<i>New and Not 1, 2024</i>	Cyanotype and dye on cotton over seven wood panels	55 x 60 inches installed in concave corner
	Leia Genis	<i>New and Not 2, 2024</i>	Cyanotype and cotton over ten wood panels	55.5 x 65 inches, installed in concave corner
	Leia Genis	<i>Selective History 19, 2024</i>	Cyanotype and dye on cotton over three wood panels	50 x 44 inches
	Leia Genis	<i>Selective History 20, 2024</i>	Cyanotype and dye on cotton over four wood panels	55.5 x 53 inches
	Laura Hart Newlon	<i>You Look So Smug When You Talk About Feminism</i> 2024	Blued steel, dye sublimation prints on aluminum	10' x 3' by 7"
	Laura Hart Newlon	<i>Arrangements, 2023</i>	Printed digital collage	17x24 inches



Laura Hart Newlon *Heavy Focus, 2021*

Single channel 4k  
video with single  
channel sound

11'48" duration



Sheree Hovsepian *Shapeshifter, 2024*

Silver gelatin prints,  
ceramic, string, nails,  
velvet in walnut artist's  
frame

31.25 x 21.25 x 3.5 inches



Sheree Hovsepian *Future Self, 2024*

Silver gelatin prints,  
ceramic, string, nails,  
velvet in walnut artist's  
frame

25.25 x 19.25 x 3.5 inches



Sheree Hovsepian *Leaning In #1, 2019*

Silver gelatin print

40 x 27 inches



Sheree Hovsepian *Leaning In #3, 2019*

Silver gelatin print

24 x 16 inches



Sheree Hovsepian *Diegesis, 2020*

Silver gelatin prints,  
photograms, nylon, in  
walnut artist frame

49.5 x 37.5 x 4.5 inches



Sheree Hovsepian *Medium*, 2008

Silver gelatin print, silver gelatin photogram, nylon in artist's frame

31.5 x 25.5 x 4 inches



Liz McCarthy *New Mothering Instrument (Bending Backwards 1)* 2024

Glazed Porcelain

15" x 16" x 21" HWD

(16)



H: 27" x W: 22" x D: 19"  
(Needs a repair on the foot)

Liz McCarthy

*Imperfect Vessel*  
2024

Grouping 1 of 3  
Vessel 16

Glazed Stoneware

H: 27" x W: 22" x D: 19"

(13)



H: 18" x W: 11" x D: 7"

Liz McCarthy

*Imperfect Vessel*  
2024

Grouping 1 of 3  
Vessel 13

Glazed Stoneware

H: 18" x W: 11" x D: 7"

(1)



H: 16" x W: 8" x D: 9"

Liz McCarthy

*Imperfect Vessel*  
2024

Grouping 1 of 3  
Vessel 1

Glazed Stoneware

16" x W: 8" x D: 9"

(8)



H: 20" x W: 17" x D: 9"

*Imperfect Vessel*  
2024

Liz McCarthy

Grouping 2 of 3  
Vessel 8

Glazed Stoneware

H: 20" x W: 17" x D: 9"

(10)



H: 20" x W: 17" x D: 10.5"

*Imperfect Vessel*  
2024

Liz McCarthy

Grouping 2 of 3  
Vessel 10

Glazed Porcelain

H: 20" x W: 17" x D: 10.5"

(3)



H: 19" x W: 15" x D: 15"

*Imperfect Vessel*  
2024

Liz McCarthy

Grouping 3 of 3  
Vessel 3

Glazed Porcelain

H: 19" x W: 15" x D: 15"

(4)



H: 13" x W: 5" x D: 5"

*Imperfect Vessel*  
2024

Liz McCarthy

Grouping 3 of 3  
Vessel 4

Glazed Porcelain

H: 13" x W: 5" x D: 5"

(12)



H: 17.5" x W: 8" x D: 9"

*Imperfect Vessel*  
2024

Liz McCarthy

Grouping 3 of 3  
Vessel 12

Glazed Porcelain

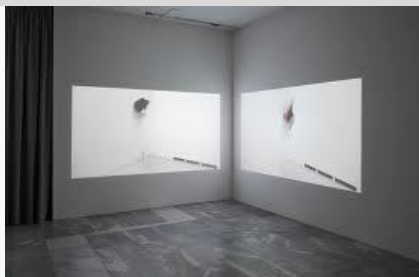
H: 17.5" x W: 8" x D: 9"

Liz McCarthy

Performance title: *Imperfect Players*  
Duration: Approximately 20 minutes

Performance

Duration: 15-30 minutes



Sondra Perry

*Double Quadruple Etcetera Etcetera I & II*, 2013

2 Channel Video (color, silent)

NA



Amy Pleasant

*Surface*, 2024

Latex paint on wall



Amy Pleasant

*Double Prop*, 2024

ink and gouache on paper

22.5 x 30 inches  
Unframed



Amy Pleasant

*Split (Seated 2)*, 2024

ink and gouache on paper

22.5 x 30 inches  
Unframed

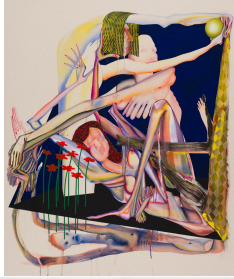


Amy Pleasant

*Pivot 3*, 2024

ink and gouache on paper

22.5 x 30 inches  
Unframed



Christina Quarles  
*I'll Take Tha Nite Shift*  
2020

Acrylic on canvas

72 x 60 x 2 inches / 182.9 x



Heather Rasmussen  
*Photo-multigraph #8 (Thonet rocker)*  
, 2022

Pigment print, Edition 1 of  
3, 1AP

43" H x 59" W  
Unframed



Heather Rasmussen  
*Stretch, double, bellybutton (Mirror-  
room)*, 2021

Pigment print, Edition 1 of  
3, 1AP

30" H x 40" W  
Unframed



Heather Rasmussen  
*Untitled (Holding leg over chair with  
mirror)*, 2017

Pigment Print, Edition 2 of  
3, 1AP

30" H x 40" W  
Unframed



Heather Rasmussen  
*Untitled triptych (Green chair  
sequence with cable release)*, 2019

Pigment print, Edition 1 of  
3, 1AP

16" H x 62" W  
Unframed



Heather Rasmussen  
*Untitled (Segmenting with mirror #1)*,  
2015

Pigment Print, Edition 3  
of 3, 1AP

20" H x 33" W  
Unframed

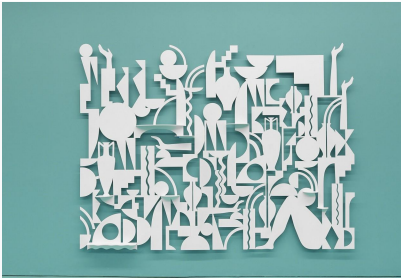




Heather Rasmussen *Untitled diptych (Body and palm frond on blue)*, 2020

Pigment prints

EACH 20" H x 26.5" W  
Unframed



Carolyn Salas

*Before*, 2022

Powdered coated  
aluminum

96"x106"



Carolyn Salas

*The Seekers no.1*, 2025  
(screen series edition 1 of 6)

Powdered coated  
aluminum

8ft tall x 12ft wide  
96 x 144 inches