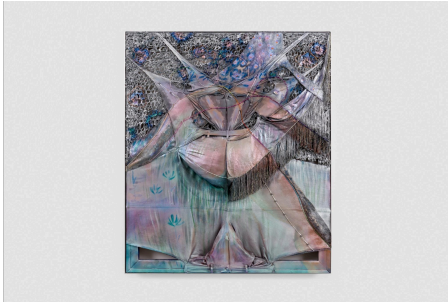


Sherbet Green

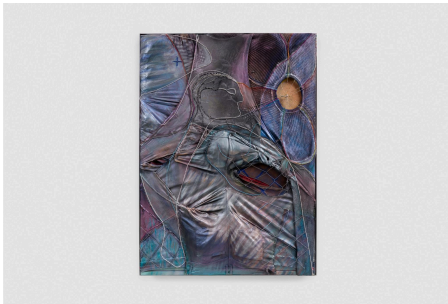
Care for You

Anthony Baussy & Tyler Eash
22 February - 29 March

Exhibition checklist



Tyler Eash
Climax 1, 2025
Jersey, denim, oil, car paint, glass seed beads, and black freshwater pearl
Framed in aluminium
142 x 105 x 10 cm



Tyler Eash
Climax 2, 2025
Jersey, denim, oil, car paint, glass seed beads, and black freshwater pearls
Framed in aluminium
141 x 121 x 10 cm



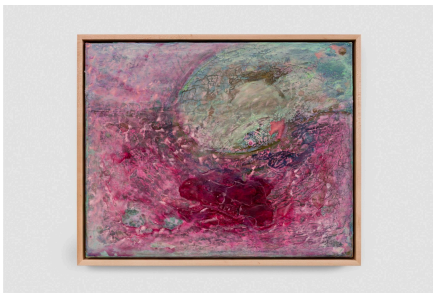
Tyler Eash
Faerie, 2024
Inherited red abalone shell, car paint, varnish, glass seed beads, dentalium, black freshwater pearls, cowhide, thread, and artist's hoop earring
210 x 15 x 10 cm



Tyler Eash
Snake with Secret Name, 2025
Car headlights, laser level, mirror, car
paint, fabric, Burberry buffalo
toggles, cotton thread, leather
300 x 800 x 46 cm



Tyler Eash
Fagòt, 2025
Ceiling support, willow, cowhide,
lambskin, Burberry buffalo horn
toggles, and car paint
300 x 20 x 20 cm



Anthony Baussy
Bang, 2024
Ink, shellac and raw pigment on
canvas
Framed in maple with walnut details
38 x 46 cm



Anthony Baussy
Care for You, 2024
Ink, shellac and raw pigment on
canvas
Framed in maple with walnut details
38 x 46 cm



Anthony Baussy
A Precious Opportunity, 2024
Ink, shellac and raw pigment on
canvas
Framed in maple with walnut details
38 x 46 cm



Anthony Baussy
H.R.I.H., 2025
Plaster, agave-fibre-based wax
pigment, and varnish
238 x 35 x 28 cm



Anthony Baussy
A.H.R.A., 2025
Plaster, agave-fibre-based wax
pigment, and varnish
210 x 240 x 40 cm