

ALTMAN SIEGEL

1150 25TH ST. SAN FRANCISCO, CA 94107

tel: 415.576.9300 / fax: 415.373.4471

www.altmansiegel.com

Didier William
Beyond the Bodies' Edge
January 9 – February 22, 2025

Gallery 1



Didier William

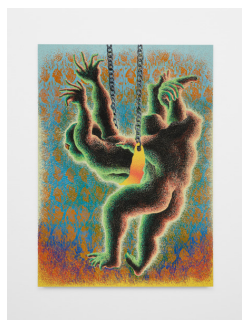
Steel Yourself, 2024

Ink and wood carving on panel

32 x 42 in

81.3 x 106.7 cm

(DW-P24-14)



Didier William

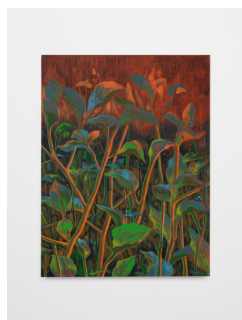
Tandem, 2024

Acrylic, ink, wood carving on panel

72 x 52 in

182.9 x 132.1 cm

(DW-P24-06)



Didier William

Jumpseed, Redseed, 2024

Acrylic on panel

30 x 40 in

76.2 x 101.6 cm

(DW-P24-07)



Didier William

It's Safest Through the Fire, 2024

Acrylic, ink, wood carving on panel

72 x 52 in

182.9 x 132.1 cm

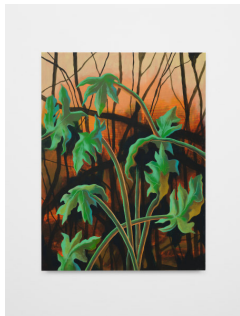
(DW-P24-08)

ALTMAN SIEGEL

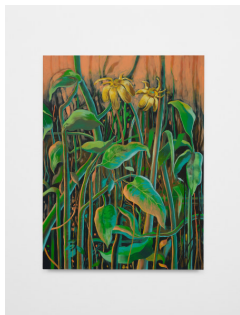
1150 25TH ST. SAN FRANCISCO, CA 94107

tel: 415.576.9300 / fax: 415.373.4471

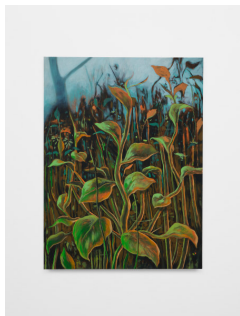
www.altmansiegel.com



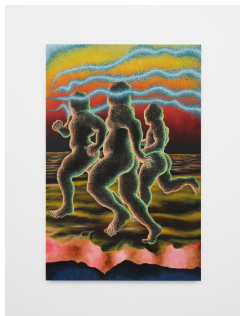
Didier William
Miami Papaya, 2024
Acrylic on panel
30 x 40 in
76.2 x 101.6 cm
(DW-P24-01)



Didier William
Susan's, 2024
Acrylic on panel
30 x 40 in
76.2 x 101.6 cm
(DW-P24-05)



Didier William
Jumpseed, Smartweed, 2024
Acrylic on panel
30 x 40 in
76.2 x 101.6 cm
(DW-P24-03)



Didier William
Dark Shores, 2024
Acrylic, ink, oil, wood carving on panel
80 x 52 in
203.2 x 132.1 cm
(DW-P24-02)