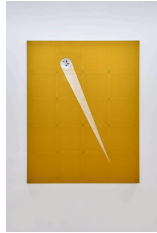


Adam Milner
Meanwhile

March 7 – April 5, 2025



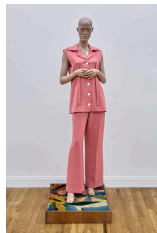
Adam Milner
Left Behind
2025
Porcelain plate, cigarettes, lighter, aluminum can tab, bandaid, and oil on linen,
aluminum and wood stretcher bars
80 x 62 in (203.2 x 157.48 cm)
AM25PG001



Adam Milner
Petal Painting
2025
Rose petals, oil, and acrylic on linen, aluminum stretcher bars
80 x 62 in (203.2 x 157.48 cm)
AM25PG002



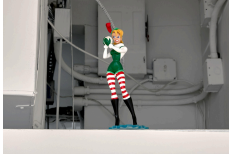
Adam Milner
Red Drawings
2020–2025
Ink and gesso on wrappers, aluminum frames
6.5 x 16 in (16.51 x 40.64 cm)
6.5 x 20 in (16.51 x 50.8 cm)
6.5 x 36 in (16.51 x 91.44 cm)
AM25DW003



Adam Milner
CPSA.F001.S003.SB014.F158 (Patricia Still poses near a cut down tree on their farm near Westminster, Maryland, c. 1978)
2021/2025
Wool pantsuit, Rootstein mannequin, dyed carpet, wood platform
76 x 24 x 24 in (193.04 x 60.96 x 60.96 cm)
AM25SC004



Adam Milner
CPSA.F001.S003.SB014.F158 (Patricia Still poses near a cut down tree on their farm near Westminster, Maryland, c. 1978)
2025
Cotton pantsuit, Rootstein mannequin, dyed carpet, wood platform
76 x 24 x 24 in (193.04 x 60.96 x 60.96 cm)
AM25SC005



Adam Milner
Meanwhile Assortment
2011—2025

vintage book clippings, foil wrappers, enamel, and gesso on cookie tins; cast and 3D printed bronze; gesso on chocolate box dividers, with brass, glue, and acrylic items; twist ties, plastic STD swab shaft, and burnt incense sticks in fabric gift bag; porcelain and stoneware containers; sand, flashe, and label on skin cream tin; sand and interior latex on chocolate box; plexiglass, foam core, paper, glitter, acrylic medium, dyed velvet, praying mantis, label, found house; enamel, flashe, interior latex paint, sand, and label on cookie box; glitter, beads, and rhinestones on recycled wax in cardboard box; glazed porcelain; rock with gum chewed and arranged by the artist's sister; Pet Rock in porcelain dish; egg candle on metal shelving, interior latex paint, enamel, and acrylic on chocolate box; aluminum foil in macaron boxes; found glass figurines, candy, found rock art, bronze Snoopy by the artist's dad, glazed porcelain, and 2011 Easter egg with acrylic, ink, and graphite, on foil covered box with tangles and plasticine; flashe and gift ribbon on box, ceramic pots with glaze, tissue paper; label on box with interior contents; dried petals and pronoun pins in glazed stoneware with poseable Santa; paint on coffee cups; figurine borrowed from the artist's dad

Dimension variable
AM25IN006



Adam Milner
Untitled
2019—2025
Dust, MDF, polystyrene, felt, acetate film
10.5 x 24 x 11 in (26.67 x 60.96 x 27.94 cm)
AM25SC007



Adam Milner
Untitled
2015—2025
Fused matches; cast plaster, wax, and alginate; gesso, polyurethane, and glue; recycled mail on wood; sand; crystals; ostrich egg; dried sweet peas; seashells; rhinestones; marbles; plastic and rubber toys; various packaging; flat file model (graphite and tape on paper); skin cream containers with bees and label; Clyfford Still Museum concrete building fragment; White Sands National Park sand; lemon; gifted silver leaf on almond and antacid; paper and plastic hand impressions from friends; glazed porcelain; polymer on wishbone; ceramic mold fragment; worry stone; twisted and knotted tissue; foam core; lightbulb with interior latex; paper, thread, hot glue, and tape butterfly
Dimension variable
AM25SC008



Adam Milner
Column Drawing
2025
Flashe on gallery column
Dimension variable
AM25SS009