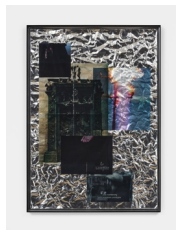


# Soft Opening,

Captions & Courtesies



Eburn Sodipo

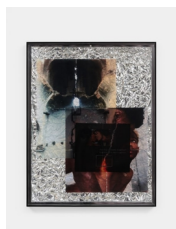
*Le Vampire*, 2025

Mylar, digital prints, resin, acrylic

103.3 x 73.3 x 5.1 cm (40 5/8 x 28 7/8 x 2 inches)

Courtesy of the artist and Soft Opening, London

Photography Eva Herzog



Eburn Sodipo

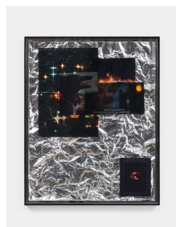
*First Moment of Contact*, 2025

Mylar, digital prints, resin, acrylic

68.3 x 53.2 x 5 cm (26 7/8 x 21 x 2 inches)

Courtesy of the artist and Soft Opening, London

Photography Eva Herzog



Eburn Sodipo

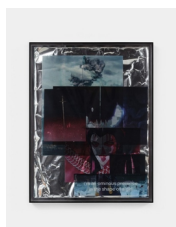
*Infinite Economic Growth*, 2025

Mylar, digital prints, resin, acrylic

73.3 x 58.2 x 5 cm (28 7/8 x 22 7/8 x 2 inches)

Courtesy of the artist and Soft Opening, London

Photography Eva Herzog



Eburn Sodipo

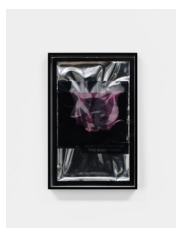
*An Ominious Presence*, 2025

Mylar, digital prints, resin, acrylic

63.3 x 48.2 x 5 cm (24 7/8 x 19 x 2 inches)

Courtesy of the artist and Soft Opening, London

Photography Eva Herzog



Eburn Sodipo

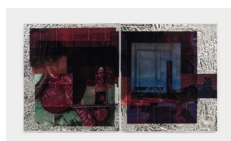
*This Much I know*, 2025

Mylar, digital prints, resin, acrylic

28.2 x 18.2 x 5 cm (11 1/8 x 7 1/8 x 2 inches)

Courtesy of the artist and Soft Opening, London

Photography Eva Herzog



Eburn Sodipo

*Sometime / All I Know Is*, 2025

Mylar, digital prints, resin

135 x 120 x 1 cm (53 1/8 x 47 1/4 x 3/8 inches)

Courtesy of the artist and Soft Opening, London

Photography Eva Herzog

# Soft Opening,



Eburn Sodipo

*What if Laure Was / A Black Goddess Come to Earth,*

2025

Mylar, digital prints, resin

160 x 120 x 1 cm (63 x 47 1/4 x 3/8 inches)

Courtesy of the artist and Soft Opening, London

Photography Eva Herzog