

Elizabeth Ravn

Forecast

March 27 - May 3, 2025

Opening Reception: Thursday, March 27 | 6-8pm

David Peter Francis is pleased to present *Forecast*, a solo exhibition with Berlin-based artist Elizabeth Ravn.

The viewer is behind them. They could be waiting their turn, or trying to eavesdrop on another conversation. I am witnessing a build up and break down—both enacted in subtlety upon the human and architecture surrounding. Layers of history become contact points for surface and structure, where they join in something like a color, or a texture, or a shadow. Ravn shapes semblance without depiction; or is it the other way around?

Today I'm passing by the same place again—it's more green this time, there is more paint this time, the tree is gone this time, the bar is empty this time. I'm nodding and I'm waving to something, someone, over miles. Maybe I am longing to be in that atmosphere. I think, how do you paint the tender whites of eyes when the people are absent? How to pet a concrete wall with the same hand that caresses a dog? How to attend to the man reading the right-wing newspaper *Bild*? Every morning—no matter what sprawls in black and white—I take a shit. While more is left neglected, nothing else to do but dump onto the linoleum tiling like the woman in Ravn's painting. I want to copy this proposed method of attack, hopeless except for my bowels. Irony too that *bild* is the German word for image.

Blue-light pictures are gazed at through dreary and slowly-passing winter months. Maybe I turn on the therapy lamp and get some flat-form sun? Groundhog day, distinguished only by those who sit beside us, as we bask in monotonous days. Time and its immeasurable traces appear not only in the contemporary (or not) dress of the figures, but in the depiction of things "past" within counter culture, the urban landscape, living things, and evolving monuments. The abandoned is given the same "incomplete" status that something yet to grow inherits naturally—both have a way to go. The duration of informal architectures—the home, studio, street, telephone booth, bar, parties, or a friend's sofa—each rendered through layers of paint, seeing through one layer to another; looking through orange to discover yellow underneath.

— Jacksun Bein

Elizabeth Ravn (b.1994, Brooklyn, NY) received a Bachelors in Fine Arts from the School of the Art Institute of Chicago, Chicago, IL in 2016. She lives and works in Berlin. Recent solo and group exhibitions include die raum, Berlin (2024); Deborah Schamoni, Munich (2023); SOX, Berlin (2023); KINDL Centre for Contemporary Art, Berlin (2022); ChertLüdde Bungalow, Berlin (2022); Kinderhook & Caracas, Berlin (2021); Kjøpmannsgata Ung Kunst, Trondheim, (2021); and Pina, Vienna (2019).

David Peter Francis

35 East Broadway #3F, New York, NY 10002
gallery@davidpeterfrancis.com

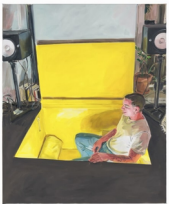
Elizabeth Ravn
Forecast

Checklist

Room 1:



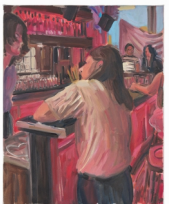
Elizabeth Ravn
Stairwell, 2025
oil on canvas
23 5/8 x 19 3/4 inches (60 x 50 cm)
(ER112)



Elizabeth Ravn
Cubbyhole, 2025
oil on canvas
43 1/4 x 35 3/8 inches (110 x 90 cm)
(ER109)



Elizabeth Ravn
Bild, 2024
oil on canvas
39 3/8 x 31 1/2 inches (100 x 80 cm)
(ER103)



Elizabeth Ravn
Between Us, 2025
oil on canvas
19 3/4 x 15 3/4 inches (50 x 40 cm)
(ER107)

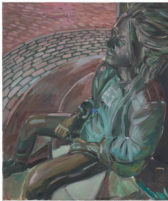


Elizabeth Ravn
November, 2024
oil on canvas
43 1/4 x 35 3/8 inches (110 x 90 cm)
(ER100)

Room 2:



Elizabeth Ravn
Biergarten, 2025
oil on canvas
35 3/8 x 29 1/2 inches (90 x 75 cm)
(ER111)



Elizabeth Ravn
Punk with Belgrade Hand, 2025
oil on canvas
25 5/8 x 21 5/8 inches (65 x 55 cm)
(ER105)



Elizabeth Ravn
Sidewalk Sprouts, 2025
oil on canvas
19 3/4 x 15 3/4 inches (50 x 40 cm)
(ER106)



Elizabeth Ravn
Seventeenth of May, 2025
oil on canvas
43 1/4 x 35 3/8 inches (110 x 90 cm)
(ER104)



Elizabeth Ravn
Banner Makers, 2025
oil on canvas
23 5/8 x 31 1/2 inches (60 x 80 cm)
(ER110)

Office:



Elizabeth Ravn
Telephone, 2024
oil on canvas
27 1/2 x 19 3/4 inches (70 x 50 cm)
(ER108)



Elizabeth Ravn
Frauke, 2025
oil on canvas
25 5/8 x 21 5/8 inches (65 x 55 cm)
(ER101)