

True love will find you in the end

Matteo Nasini

opening reception April 1st, 2025

02.04.2025 - 30.05.2025

The title is taken from a song by *Daniel Johnston*, with an uncertain and poetic meaning. In these few words, a dramatic and hopeful message coexist.

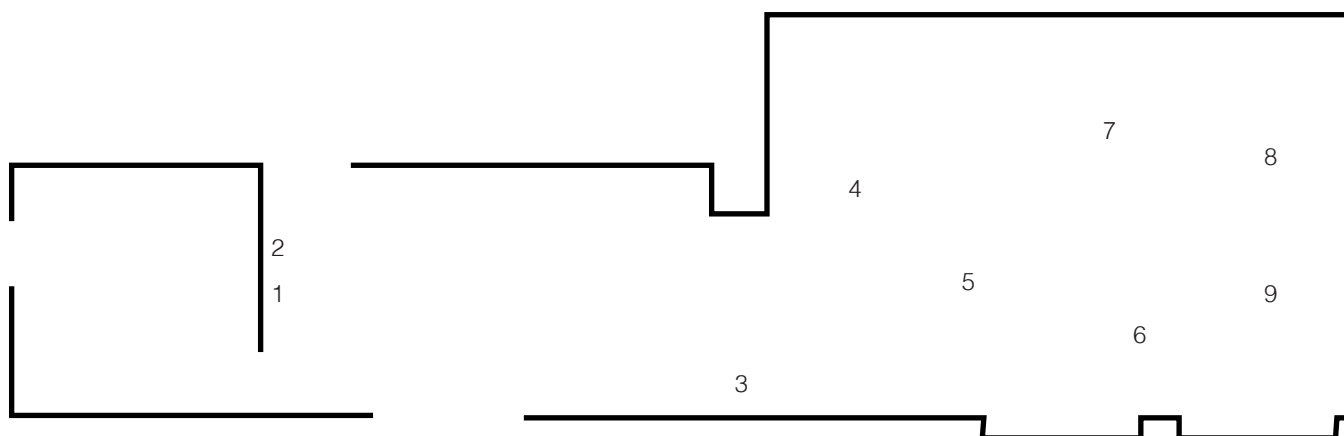
In our world and in our lives, these two elements are often accompanied by passion, driving toward what we desire and feel is right—pure for some, identity-driven for others; a tool for fighting, in defense of values, truth, and our love.

Passion is an absolute feeling, capable of dominating both individual and collective personalities to the point of profoundly influencing historical changes. It has always accompanied and guided our evolution through a series of mistakes, catastrophes, joys, and achievements pursued in the name of love, in the name of deities, in the name of nations, in the name of freedom.

The exhibition explores this ambiguous terrain by presenting two bodies of work together: on one hand, *Wild combination, 2025*, resin sculptures with organic, sinuous shapes that feature details and fragments of explosions replicated from the visual chronicles of our present; on the other, *Gli Esultanti, 2025* a series of helmets defined by dimensions unfit for human bodies, seemingly from a distant past, yet scattered with elements recalling the technology of our time. The works are supported by iron structures, seemingly functional, but when frozen in a static position, they suggest tension and uncertainty about their true meaning.

Matteo Nasini (b. 1976, Rome).

He showed his work at: MAXXI, MACRO, La Galleria Nazionale, GAM, Villa Medici, Auditorium Parco della Musica (Rome); Museo Villa Croce, Genova; Palazzo Fortuny, Venice; Fondazione Pistoletto, Biella; Museo Carlo Zauli, Faenza; MADRE, Naples; Centro Arti Visive Pescheria, Pesaro; MANIFESTA13, Leclerc Centre d'art (Marseille); EDF Foundation, Paris La Défense, (Paris); Espace Le Carré, Palais Beaux- Arts (Lille); Mo.Co., La Panacee (Montpellier); Hammer Museum, Los Angeles; Marsèlleria, New York; Royal Museum of Worcester, Worcester; MRAC - Musée Régional d'Art Contemporain, Serignan; Istituto Italiano di Cultura, Stockholm.

**1**

True love will find you in the end, 2025
 Fabrics, thread and pvc, 270 x 240 cm

2

True love will find you in the end, 2025
 Fabrics, thread and pvc, 180 x 220 cm

3

Gli Esultanti, 2025
 PLA, glass, concrete, sand, copper, iron and enamel, 33 x 145 x 70 cm

4

Gli Esultanti, 2025
 PLA, glass, concrete, sand, copper, iron and enamel, 60 x 150 x 23 cm

5

Wild combination, 2025
 Resin, iron and enamel, 37 x 122 x 70 cm

6

Gli Esultanti, 2025
 PLA, glass, concrete, sand, copper, iron and enamel, 29 x 140 x 60 cm

7

Wild combination, 2025
 Resin, iron and enamel, 70 x 97 x 37 cm

8

Gli Esultanti, 2025
 PLA, glass, concrete, sand, copper, iron and enamel, 28 x 150 x 60 cm

9

Wild combination, 2025
 Resin, iron and enamel, 70 x 97 x 37 cm