

Landscapes

— Ryan Nault

April 4 – June 1, 2025

MICKEY is pleased to present *Landscapes*, the gallery's second solo exhibition with artist Ryan Nault. For the exhibition nine new paintings of apples were assembled at both the artist's home and studio. Paintings of still lifes that emulate the botanical illustrations of plant scientist Luther Burbank. The exhibition's title is sourced from the first page of volume three of Burbank's *Methods and Discoveries*.

PLANNING A NEW PLANT

THE FIRST STEPS IN PRACTICAL WORK

SOMEONE has said that a painter is a man who can see the picture in the landscape. In similar fashion it may be said that a successful plant experimenter is one who can see new varieties of future plants when he looks at old existing varieties.

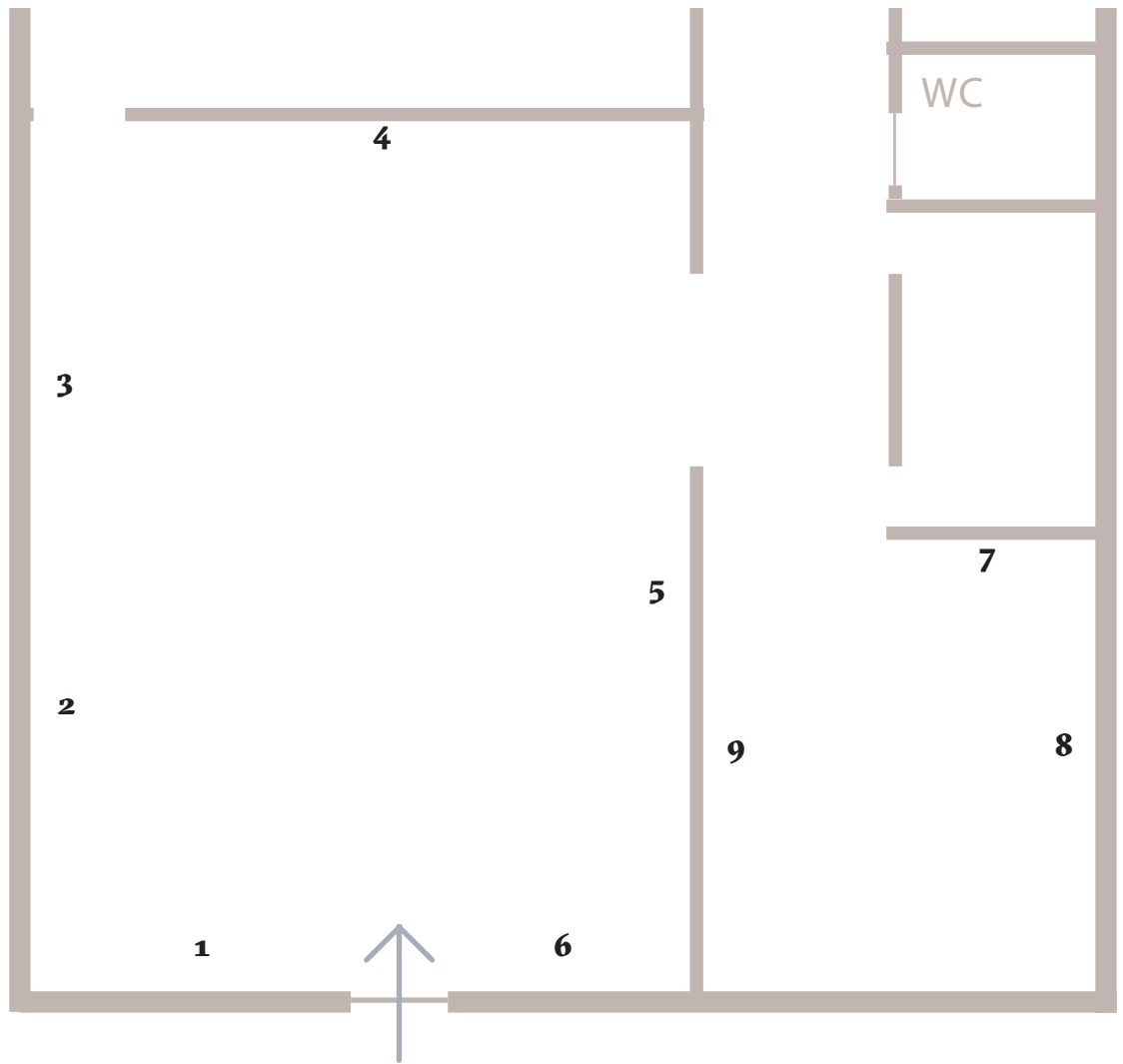
But of course the painter, whatever his constructive imagination, does not always see at first glance every detail of form and color that will ultimately appeal to him. Nor can the plant experimenter claim, by any manner of means, to know always from the outset just what his new plant creations will be like. There are numberless instances, indeed, in which a plant experimenter who operates on a large scale may make hybridizing experiments, merely to test the possibilities of crossing certain species, without having any precise and definite goal in view.

[VOLUME III—CHAPTER I]

Ryan Nault (b. 1991, Grand Rapids, MI) lives and works in Chicago. Recent exhibitions include *Skyscraper Lodos* (Mexico City); *Es ist nur eine Frage der Zeit* Echo (Cologne); *Chicago Baader-Meinhof* (Omaha); *Down in the woods, up to the sky* Double Q Gallery (Hong Kong); *Hand Painted Pictures* MICKEY (Chicago); *The Long Dream* Museum of Contemporary Art (Chicago); *Operator?*, Soul Cairn Projects (Hong Kong); and *The Storytellers*, Carrie Secrist (Chicago).

MICKEY

List of Works



1 *Two Apples in the Morning with Dishrag No. 2. Honey Crisp and Red Delicious.*

2025

gouache on cardboard mounted to panel in artist frame

2 *Two Apples in the Morning with Dishrag. Honey Crisp and Red Delicious.*

2025

gouache on cardboard mounted to panel in artist frame

3 *Two Apples in the Evening with Dishrag. Honey Crisp and Red Delicious.*

2025

gouache on cardboard mounted to panel in artist frame

4 *Two Apples in a Puddle in the Afternoon. Granny Smith.*

2025

gouache on cardboard mounted to panel in artist frame

5 *Two Apples in the Morning. Honey Crisp.*

2025

gouache on cardboard mounted to panel in artist frame

6 *Two Apples in the Morning No. 2. Honey Crisp.*

2025

gouache on cardboard mounted to panel in artist frame

7 *One Apple in the Morning. Red Delicious.*

2025

gouache on cardboard mounted to panel in artist frame

8 *One Apple in the Afternoon, Sliced. Honey Crisp.*

2025

gouache on cardboard mounted to panel in artist frame

9 *Two Apples in the Afternoon with Slice. Honey Crisp and Red Delicious.*

2025

gouache on cardboard mounted to panel in artist frame