

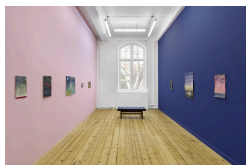
**MAUREEN PALEY.**

**CHIOMA EBINAMA**

*Real love is a love that sets you free*

**25 April – 31 May 2025**

**Image Credits**



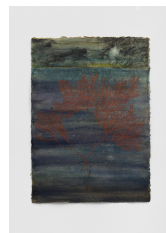
Chioma Ebinama  
*Real love is a love that sets you free*, 2025  
exhibition view, Studio M, London  
Courtesy the artist and Maureen Paley, London.  
Photo: Stephen James



Chioma Ebinama  
*Real love is a love that sets you free*, 2025  
exhibition view, Studio M, London  
Courtesy the artist and Maureen Paley, London.  
Photo: Stephen James



Chioma Ebinama  
*Did you hear a trumpet?*, 2025  
watercolour gouache and coffee on khadi paper  
29 x 21 cm - 11 3/8 x 8 1/4 in  
Courtesy the artist and Maureen Paley, London.  
Photo: Stephen James



Chioma Ebinama  
*Night coral*, 2024  
watercolour and coffee on khadi paper  
42 x 30 cm - 16 1/2 x 11 3/4 in  
Courtesy the artist and Maureen Paley, London.  
Photo: Stephen James



Chioma Ebinama  
*The night belonged to us*, 2025  
watercolour gouache and coffee on khadi paper  
55 x 75 cm - 21 5/8 x 29 1/2 in  
Courtesy the artist and Maureen Paley, London.  
Photo: Stephen James

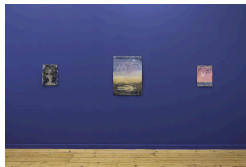


Chioma Ebinama  
*Amitābha*, 2025  
watercolour gouache and coffee on khadi paper  
20.3 x 15.2 cm - 8 x 6 in  
Courtesy the artist and Maureen Paley, London.  
Photo: Stephen James



Chioma Ebinama  
*Endless flames*, 2025  
watercolour gouache and coffee on khadi paper  
30 x 42 cm - 11 3/4 x 16 1/2 in  
Courtesy the artist and Maureen Paley, London.  
Photo: Stephen James

**MAUREEN PALEY.**



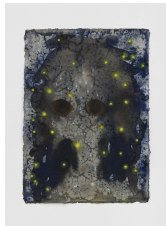
Chioma Ebinama

*Real love is a love that sets you free*, 2025

exhibition view, Studio M, London

Courtesy the artist and Maureen Paley, London.

Photo: Stephen James



Chioma Ebinama

*A breathtaking heat*, 2025

watercolour gouache and coffee on khadi paper

42 x 30 cm - 16 1/2 x 11 3/4 in

Courtesy the artist and Maureen Paley, London.

Photo: Stephen James



Chioma Ebinama

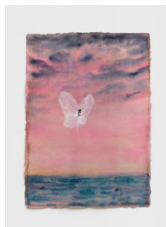
*Dryspell*, 2025

watercolour gouache and coffee on khadi paper

77 x 56 cm - 30 1/4 x 22 in

Courtesy the artist and Maureen Paley, London.

Photo: Stephen James



Chioma Ebinama

*An embrace*, 2025

watercolour gouache and coffee on khadi paper

42 x 30 cm - 16 1/2 x 11 3/4 in

Courtesy the artist and Maureen Paley, London.

Photo: Stephen James