

20.03 – 18.05.2025

MAGGY HAMEL-METSOS
Simile Aria

NUMA AMUN
Absoluité

SPRING EXHIBITIONS

Opening

Thursday March 20 2025, 5pm—10pm

Press tour: 2pm—4pm

Fonderie Darling launches its spring program, featuring two solo exhibitions by two key artists of the Montreal scene, combining enigmatic installations and transcendental paintings.

MAGGY HAMEL-METSOS
20.03.2025 – 18.05.2025

Simile Aria

NUMA AMUN
20.03.2025 – 18.05.2025

Absoluité

Exhibitions

These two exhibitions, exploring themes linked to the human condition, offer striking visual and artistic experiences. The first, *Simile Aria*, plunges viewers into a reflection on human testimony, the intensity of emotions and their materialization through a melodramatic installation presented in the Main Hall, featuring an organ. The second exhibition, *Absoluité*, presented in the Small Gallery, invites us to contemplate body and mind through a series of hyper-realistic paintings depicting characters in the midst of astral travel, a mystical experience of separation between the physical body and consciousness.

Schedule and rates

Wed. – Sun. : 12pm – 7pm

Thursday : 12pm – 10pm

Admission \$8

Free on Thursdays

Follow us

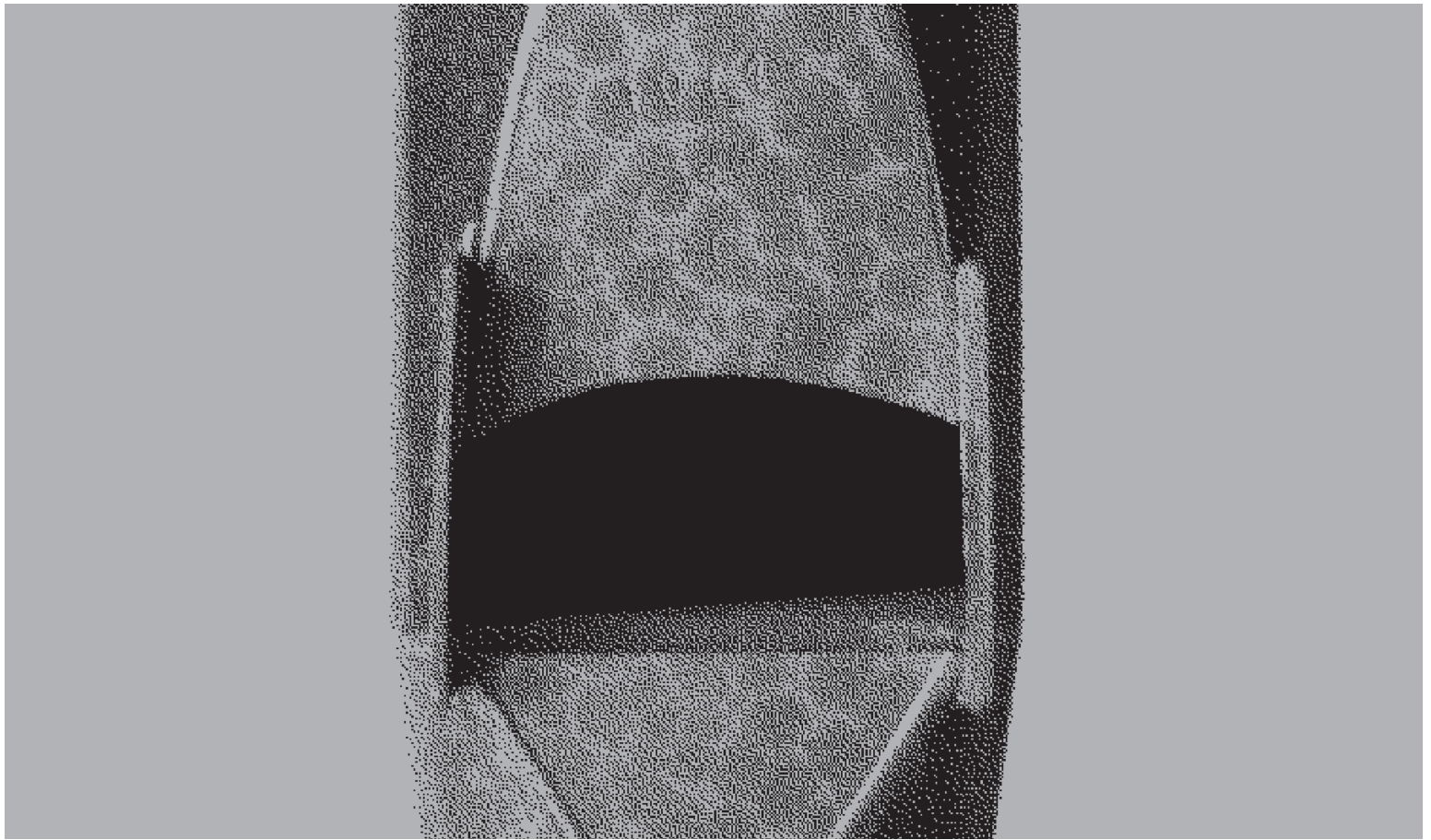
[Website](#)

[Instagram](#)

[Facebook](#)

[LinkedIn](#)





MAGGY HAMEL-METSOS **20.03.2025 – 18.05.2025**

Simile Aria

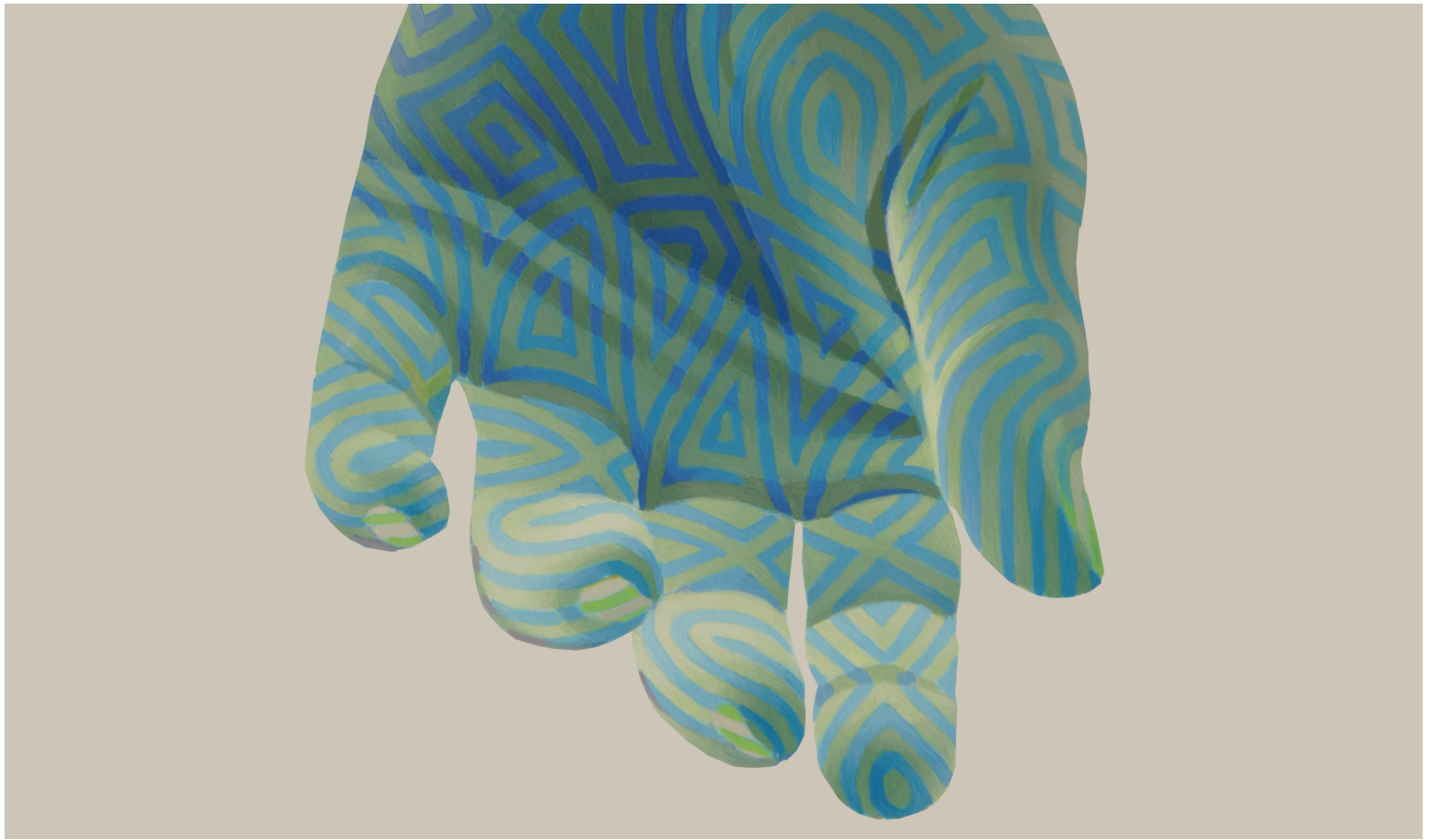
Simile Aria explores the inner workings of testimony, reflecting our insatiable desire to see our most vivid feelings expelled from us. The exhibition is built like an enigma, assembling disparate fragments into a melodramatic and tragic fresco.

Industrial air compressors keep an organ alive, producing long sighs. Images of screaming opera singers and weeping children, frozen in black-and-white photographs, are precisely arranged in the space. As the sun reaches its peak, its rays penetrate through the window, refract in a mirror, and, through the effect of a magnifying glass, set the photographs ablaze, leaving ashes behind.

The term simile aria, borrowed from music theory, refers to a melody that compares the singer's personal experience to a wider phenomenon, often linked to nature.

ABOUT THE ARTIST

Born in 1997, Maggy Hamel-Metsos is an artist who works primarily in sculpture with a conceptual approach. Her work has been shown in Europe, Canada and the United States, most recently at Joe Project Gallery in Montreal and Galerie du Nouvel Ontario in Sudbury. The artist was the 2020 Quebec winner of the 1st BMO Art Prize and is represented by Eli Kerr Gallery. Maggy Hamel-Metsos holds a B.A. in Studio Arts from Concordia University.



NUMA AMUN
20.03.2025 – 18.05.2025

Absoluité

Numa Amun's artistic practice, a skillful blend of figurative abstractions and optical illusions, unfolds a universe of contemplative meditations where the magnetic precision of his paintings, far from digital, questions the soul and the body, profoundly addressing themes such as the cycle of life, love, and solitude.

Presenting his most recent work in three hyper-realistic pieces, the artist captures characters immersed in a mysterious subjective experience, that of astral travel. This out-of-body experience, which crosses cultures and eras, reveals a possible universal phenomenon deeply rooted in the human condition.

In *Absoluité*, Numa Amun approaches this contemplative experience as a mediation of feeling, to the point of disconnecting body and mind. In this way, he summons the invisible through a fragmentation of colours, like a fragmentation of reality.

ABOUT THE ARTIST

Numa Amun was born in Montreal in 1974 and completed a master's degree in visual art at Concordia University. He exhibited in situ in the tower of the église de la Nativité-de-la-Sainte-Vierge in 2004 and at the église du Très-Saint-Nom-de-Jésus in 2018, both in Hochelaga-Maisonneuve. He has taken part in rare exhibitions here and outside the province, such as at Calgary's Illingworth Kerr Gallery in 2009. Having been part of the Biennale de Montréal in 2007 and the Triennale du Musée d'art contemporain de Montréal in 2011, his work was the subject of a solo exhibition at the MNBAQ in 2019.

2025 CALENDAR

Winter

CORPUSCULE DANSE &
DANSE-CITÉ
19.06 - 17.08.2025

MARIE SÉCOLÈNE
BRAULT
06.02.2025

Partnership

Members Evening

Spring

MAGGY HAMEL-METSOS
NUMA AMUN
20.03 - 18.05.2025

MAUREEN X CONCORDIA MFA
GRADUATES
27.05 - 03.06.2025

GENERAL ASSEMBLY
29.05.2025

Partnership

Summer

FRANTZ PATRICK
HENRY
KAREN ELAINE
SPENCER
19.06 - 17.08.2025

PLACE PUBLIQUE 2025
OUTDOOR PROGRAMMING

Place du Sable-Gris

Fall

MOMENTA BIENNALE
D'ART CONTEMPORAIN
11.09 - 23.11.2025

ARTISTS IN RESIDENCE

03.02 -
03.04.2025

Pierre Durette

Causapscal-born Pierre Durette continues a new series of drawings entitled Marais, characterized by an anachronistic interplay in which ideas dilute and coalesce into a shapeless, teeming mass.

04.03 -
04.05.2025

Yael Frank

Yael Frank develops Sniff, a parodic film that juxtaposes absurd puppets and ecological issues, exploring muteness, the collapse of language and the crisis of agency through sculptural video.

FONDERIE DARLING

Fonderie Darling, a visual arts centre, is one of Canada's leading centres for contemporary art. Located in two former industrial buildings of an old foundry in Old Montreal, Fonderie Darling's main activities take place on a 3500 m2 site and are aimed at audiences curious to discover contemporary art in its various forms. Managed by the non-profit charitable organization Quartier Éphémère, Fonderie Darling's mandate is to support the creation, production and dissemination of works by emerging artists, complementing its exhibitions with creative workshops, international and interregional artistic residencies and site-specific projects.

MEDIA CONTACT

Ana Lucia Londono Flores
communications@fonderiedarling.org
+1 514-392-1554



Conseil des Arts
du Canada

Canada Council
for the Arts



Conseil
des arts
et des lettres
du Québec



CONSEIL
DES ARTS
DE MONTRÉAL

Montréal