

EVERYBODY

rocki swiderski
the muck
May 3rd - June 7th, 2025

West Gallery

1. *backyard (firework in the city)*, 2025
Acrylic and gouache on canvas
42 x 32 in



2. *powerline study (rat at dawn)*, 2025
Gouache on panel
8 x 10 in



3. *night mare (dream horse)*, 2024
Acrylic and gouache on canvas
24 x 18 in



EVERYBODY

rocki swiderski
the muck
May 3rd - June 7th, 2025

4. *suspect (fireball in the country)*, 2025
Acrylic and gouache on canvas
24 x 18 in



5. *wet dream (desert pond)*, 2025
Acrylic and gouache on canvas
24 x 18 in



6. *broken gate*, 2025
1997 T100 tailgate, rhino liner, acrylic,
gouache, bricks
24 x 62 x 10.5 in



EVERYBODY

rocki swiderski
the muck
May 3rd - June 7th, 2025

7. *split circuit (wood snake)*, 2025
Wood, construction adhesive, parking lot
battery
13 x 1 x 1.5 in

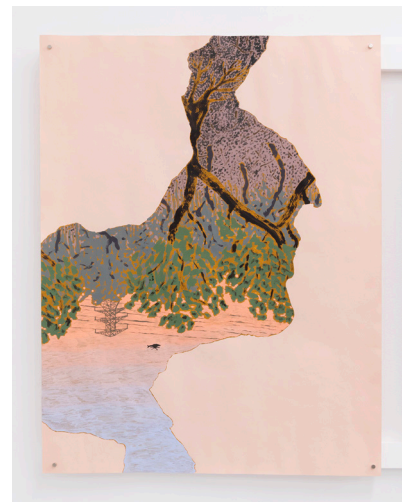


East Gallery

8. *puddle (evil eye)*, 2022
Acrylic and gouache on canvas
12 x 16 in



9. *ochre puddle*, 2025
Acrylic and gouache on paper
25.375 x 19.375 in



EVERYBODY

rocki swiderski
the muck
May 3rd - June 7th, 2025

10. *pink puddle*, 2025
Acrylic and gouache on paper
25.25 x 19.375 in



11. *green puddle*, 2025
Acrylic and gouache on paper
25.25 x 19.375 in



12. *blue puddle*, 2025
Acrylic and gouache on paper
25.25 x 19.375 in



EVERYBODY

rocki swiderski
the muck
May 3rd - June 7th, 2025

13. *coral puddle*, 2025
Acrylic and gouache on paper
25.375 x 19.375 in



14. rocki swiderski
red puddle, 2025
Acrylic and gouache on paper
25 x 19.5 in



15. *the whole of the moon*, 2025
Acrylic and gouache on cradled paper
10 x 8 in



EVERYBODY

rocki swiderski
the muck
May 3rd - June 7th, 2025

16. *hauler*, 2025

Used trailer hitch, galvanized, mild, and stainless steel, plastic, aluminum, nickel plated jewelry, mirror shards, rust, mica, grout, epoxy, wood.

17 x 9 x 15.5 in



17. *flap stand (monument toward the material aftermath)*, 2025

Cinder block, jackstand, wood, plastic twine, foam grips, galvanized steel, diamond plate, rhino liner, grout, dirt, acrylic, gouache, carnation shim.

25 x 60 x 7.5 in

