

# MOON PALACE

Charlie Burtenshaw

DES  
BAINS

16 May - 20 June, 2025

Private View: 15 May, 18:00 - 21:00

Semantic transparency is a theoretical construct. It refers to the extent to which the constituents of multi-morphemic words contribute to the meaning of the whole word (e.g., fool + ish or re + hearse in the case of derived words, or snow + ball or shin + dig in the case of compound words). Semantic transparency ranges continuously. From fully transparent to fully opaque. For example, the compound snowball is considered to be transparent because it derives its meaning from both snow and ball, whereas the compound shindig is considered to be opaque because its meaning is un-related to the meaning of either shin or dig. Other compounds, such as straw-berry, are semantically transparent with respect to one constituent (e.g., berry) but opaque with respect to the other (e.g., straw). Semantic transparency has been defined and measured several different ways in the context of compound words (see Gagne et al., 2019, and Gagne et al., 2016, for discussion), each of which might tap into different aspects of semantic transparency.\*

\* Leah Auch, Christina L. Gagné, Thomas L. Spalding. 2020. *Conceptualizing semantic transparency: A systematic analysis of semantic transparency measures in English compound words*. *Methods in Psychology*, Volume 3

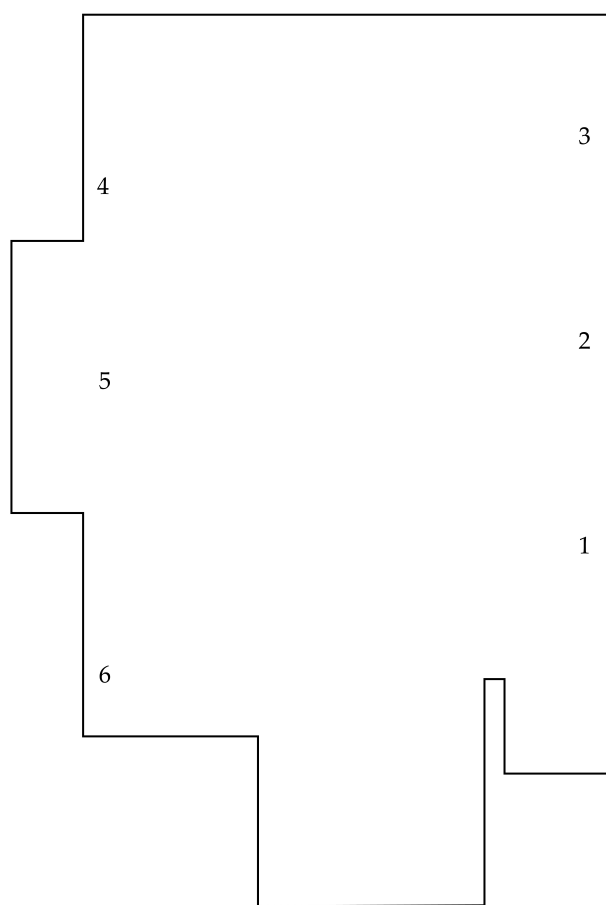
## Charlie Burtenshaw

Charlie Burtenshaw (born 1996, Medway) is an artist based in London. Received BA from Kingston School of Art 2018. Recent exhibitions include *London Inaugural Show*, Duarte Sequeira, 2024, Hothouse London 2024 and *Hard-boiled Wonderland and the End of the World*, Hardboiled, Chicago 2025.

Thursday - Saturday  
11am — 6pm

[mvb@desbains.co.uk](mailto:mvb@desbains.co.uk)

20 Great Portland St,  
London, W1W 8QR



1. Charlie Burtenshaw, *Three windows*, 2025, oil on canvas, 120 x 165 cm
2. Charlie Burtenshaw, *foreground*, 2025, oil on canvas, 120 x 165 cm
3. Charlie Burtenshaw, *Gable*, 2025, oil on canvas, 76 x 102 cm
4. Charlie Burtenshaw, *From a distance*, 2025, oil on canvas, 41 x 51 cm
5. Charlie Burtenshaw, *Close. Not far from*, 2025, oil on canvas, 161 x 213 cm
6. Charlie Burtenshaw, *Over the hill*, 2025, oil on canvas 35 x 45 cm