

CARLOS/ISHIKAWA

Images are supplied for press and promotion of
Marlene Almeida: Acute Earth, Carlos/Ishikawa, London,
22 May – 19th of July 2025

Carlos/Ishikawa requests to receive a digital copy or scan (& physical copy where relevant) of any article or publication in which images are reproduced for our archive.

Reproductions must include captions and credits as specified below.
The artist and Carlos/Ishikawa retains all copyright of images.

Please note that Carlos/Ishikawa's stock codes (for example "CI-MAA-0001")
are for internal reference only and should not be published.

Further image usage may be requested from Carlos/Ishikawa on a case by case basis.
Please contact saskia@carlosishikawa.com with any questions.

Installation photography:



Installation View, Carlos/Ishikawa, London, 2025. Image © **Marlene Almeida** 2025, courtesy the artist; Carlos/Ishikawa, London; Photographer: Damian Griffiths.



Installation View, Carlos/Ishikawa, London, 2025. Image © **Marlene Almeida** 2025, courtesy the artist; Carlos/Ishikawa, London; Photographer: Damian Griffiths.



Installation View, Carlos/Ishikawa, London, 2025. Image © **Marlene Almeida** 2025, courtesy the artist; Carlos/Ishikawa, London; Photographer: Damian Griffiths.

CARLOS/ISHIKAWA



Installation View, Carlos/Ishikawa, London, 2025. Image © **Marlene Almeida** 2025, courtesy the artist; Carlos/Ishikawa, London; Photographer: Damian Griffiths.



Installation View, Carlos/Ishikawa, London, 2025. Image © **Marlene Almeida** 2025, courtesy the artist; Carlos/Ishikawa, London; Photographer: Damian Griffiths.



Installation View, Carlos/Ishikawa, London, 2025. Image © **Marlene Almeida** 2025, courtesy the artist; Carlos/Ishikawa, London; Photographer: Damian Griffiths.



Installation View, Carlos/Ishikawa, London, 2025. Image © **Marlene Almeida** 2025, courtesy the artist; Carlos/Ishikawa, London; Photographer: Damian Griffiths.

CARLOS/ISHIKAWA



Installation View, Carlos/Ishikawa, London, 2025. Image © **Marlene Almeida** 2025, courtesy the artist; Carlos/Ishikawa, London; Photographer: Damian Griffiths.



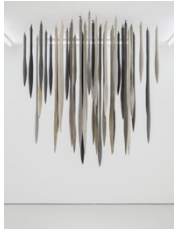
Installation View, Carlos/Ishikawa, London, 2025. Image © **Marlene Almeida** 2025, courtesy the artist; Carlos/Ishikawa, London; Photographer: Damian Griffiths.



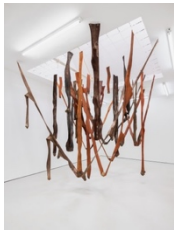
Installation View, Carlos/Ishikawa, London, 2025. Image © **Marlene Almeida** 2025, courtesy the artist; Carlos/Ishikawa, London; Photographer: Damian Griffiths

CARLOS/ISHIKAWA

Individual Artwork photography:



Marlene Almeida, *Terra Aguda*, 2025, Cotton fabric objects filled with earth and painted with natural mineral pigments (clay with kaolin (white); black tourmaline; basalt; graphite; mica; biotite; and pyrolusite)
42 objects, Installed dimensions variable, © **Marlene Almeida** 2025, courtesy the artist; Carlos/Ishikawa, London;
Photographer: Damian Griffiths.



Marlene Almeida, *Colúvio/colluvium*, 2025, 13 objects in raw cotton fabric, natural mineral pigments and lateritic rocks (basalt; clay with hematite (red); goethite (ochre yellow); pyrolusite (black); and kaolin (white))
Installed dimensions variable, © **Marlene Almeida** 2025, courtesy the artist; Carlos/Ishikawa, London; Photographer: Damian Griffiths.

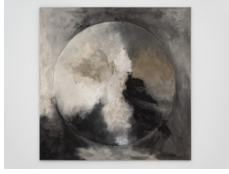


Marlene Almeida, *Organomineral I*, 2010-2012, Object made of natural cellulose, voile fabric filled with earth and natural binders (basalt; clay with hematite (red); goethite (ochre yellow); pyrolusite (black); kaolin (white))
44.5 x 19.5 x 6.5 cm, © **Marlene Almeida** 2025, courtesy the artist; Carlos/Ishikawa, London; Photographer: Damian Griffiths.



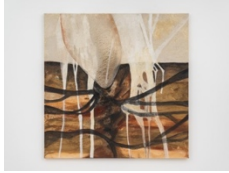
Marlene Almeida, *Cuesta*, 2024, Strips of raw cotton painted with natural mineral pigments and rock (clay with kaolin (white); black tourmaline; basalt; graphite; mica; biotite; and pyrolusite), 153 x 30 x 8 cm
© **Marlene Almeida** 2025, courtesy the artist; Carlos/Ishikawa, London; Photographer: Damian Griffiths.

CARLOS/ISHIKAWA



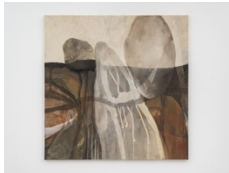
Marlene Almeida, *Terra Aguda I*, 2025, Natural mineral pigments (clay with kaolin (white); black tourmaline; basalt; graphite; mica; biotite; and pyrolusite) on canvas, 150 x 150.5 x 3.5 cm

© **Marlene Almeida** 2025, courtesy the artist; Carlos/Ishikawa, London; Photographer: Damian Griffiths.



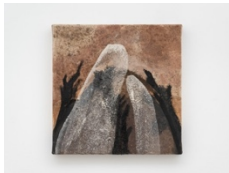
Marlene Almeida, *Das Pedras I*, 2025, Natural mineral pigments (basalt; clay with hematite (red); goethite (ochre yellow); pyrolusite (black); and kaolin (white)) on canvas, 100 x 100.5 x 3.5 cm

© **Marlene Almeida** 2025, courtesy the artist; Carlos/Ishikawa, London; Photographer: Damian Griffiths.



Marlene Almeida, *Das Pedras II*, 2025, Natural mineral pigments (basalt; clay with hematite (red); goethite (ochre yellow); pyrolusite (black); and kaolin (white)) on canvas, 100 x 100.5 x 3.5 cm

© **Marlene Almeida** 2025, courtesy the artist; Carlos/Ishikawa, London; Photographer: Damian Griffiths.



Marlene Almeida, *Terral II (De la terre)*, 2025 Natural mineral pigments (basalt; clay with hematite (red); goethite (ochre yellow); pyrolusite (black); and kaolin (white)) on canvas, 30 x 30 x 3.5 cm

© **Marlene Almeida** 2025, courtesy the artist; Carlos/Ishikawa, London; Photographer: Damian Griffiths.