

Aaron Angell

NOT ALL ON SHOW:

Hinterglasmalerei & Verre églomisé 4-5/2025: 'Organ Painting', 'Bamboo Organ Painting', 'Worm Organ Painting', 'Intarsia-View', 'Intarsia-Shut', 'Northern Renaissance Social Abstract Demonstration', 'Intarsia - Whitefly'; 'Pig, tulip, pig, tulip, pig, tulip'; 'Scholar-Melon'. Oribe 2-5/2025: 'Melon-Life On Ship', 'Abilità Negativa' (three versions), 'Tray with Two Capped Heads', 'Tray with Clouds', 'Gongshi with Carbonised Panis Quadratis'; Shino American & polychrome 2-5/2025 another 'Caterpillar Engine', two 'Flower Baskets', 'Tray with Head', 'Melon-Life On Ship'

06 June – 12 July 2025

List of Works



Aaron Angell

Bamboo Organ Painting, 2025

Hinterglasmalerei (reverse-painted glass)

Acrylic on glass with gelatin silver print, steel fixtures

50 x 70 cm

19 3/4 x 27 1/2 in

AA008



Aaron Angell

Worm Organ Painting, 2025

Hinterglasmalerei (reverse-painted glass)

Acrylic on glass with gelatin silver print, blackened steel fixtures

45.5 x 61.5 cm

17 7/8 x 24 1/4 in

AA009



Aaron Angell

Worm Organ Painting, 2025

Hinterglasmalerei (reverse-painted glass)

Acrylic on glass with gelatin silver print, blackened steel fixtures

45.5 x 61.5 cm

17 7/8 x 24 1/4 in

AA009



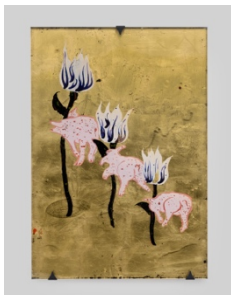
Aaron Angell
Intarsia - shut, 2025
 Hinterglasmalerei (reverse-painted glass)
 Acrylic and precious metal on glass, blackened steel
 fixtures
 45 x 60 cm
 17 3/4 x 23 5/8 in
 AA011



Aaron Angell
Northern Renaissance Social Abstract Demonstration, 2025
 Hinterglasmalerei (reverse-painted glass)
 Acrylic and precious metal on glass, blackened steel
 fixtures
 35 x 50 cm
 13 3/4 x 19 3/4 in
 AA012



Aaron Angell
Intarsia - Whitefly, 2025
 Hinterglasmalerei (reverse-painted glass)
 Acrylic and precious metal on glass, blackened steel
 fixtures
 50 x 30 cm
 19 3/4 x 11 3/4 in
 (AA013)



Aaron Angell
Pig, tulip, pig, tulip, pig, tulip, 2025
 Hinterglasmalerei (reverse-painted glass)
 Acrylic and precious metal on glass, blackened steel
 fixtures
 50 x 30 cm
 19 3/4 x 11 3/4 in
 AA014



Aaron Angell
Scholar - Melon, 2025
 Hinterglasmalerei (reverse-painted glass)
 Acrylic on glass, blackened steel fixtures
 48 x 65 cm
 18 7/8 x 25 5/8 in
 AA015



Aaron Angell
Melon - Life On Ship (1), 2025
 Oribe
 Lightly reduced stoneware with feldspathic and hagi sand inclusions, copper saturate glaze, post-firing acid soak
 42 x 62 x 33 cm
 16 1/2 x 24 3/8 x 13 in
 AA016



Aaron Angell
Abilità Negativa 3, 2025
 Oribe
 Lightly reduced stoneware with feldspathic and hagi sand inclusions, copper saturate glaze, pine needle ash, post-firing acid soak
 35 x 59 x 32 cm
 13 3/4 x 23 1/4 x 12 5/8 in
 AA019



Aaron Angell
Tray with Two Capped Heads, 2025
 Oribe
 Lightly reduced stoneware with feldspathic and hagi sand inclusions, copper saturate glaze, pine needle ash, post-firing acid soak
 35 x 52 x 33 cm
 13 3/4 x 20 1/2 x 13 in
 AA020



Aaron Angell
Tray with Clouds, 2025
 Sang de boeuf Oribe
 Reduced stoneware with feldspathic and hagi sand inclusions, copper saturate glaze, pine needle ash, post-firing acid soak
 33 x 54 x 39 cm
 13 x 21 1/4 x 15 3/8 in
 AA021



Aaron Angell
Gongshi with Carbonised Panis Quadratis, 2025
 Oribe
 Lightly reduced stoneware with feldspathic and hagi sand inclusions, copper saturate glaze, pine needle ash, post-firing acid soak, carbonised bread addition
 33 x 59 x 41 cm
 13 x 23 1/4 x 16 1/8 in
 AA022



Aaron Angell

Caterpillar Engine 13, 2025

Shino Américain

Reduced English stoneware with iron and feldspathic inclusions, carbon trap shino and polychrome glazes

39 x 70 x 35 cm

15 3/8 x 27 1/2 x 13 3/4 in

AA023



Aaron Angell

Tray with Head, 2025

Reduced English stoneware with iron and feldspathic inclusions, reconstructed song 'tianmu' and polychrome glazes

23 x 53 x 34 cm

9 x 20 7/8 x 13 3/8 in

AA025