

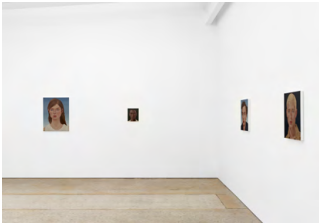
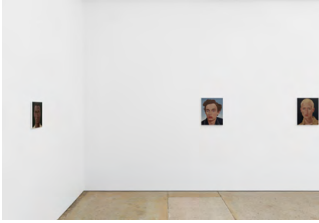
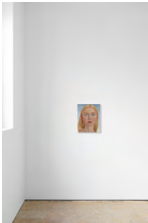
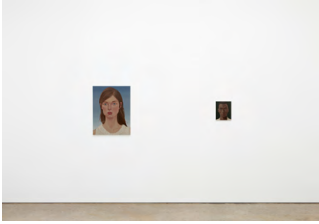
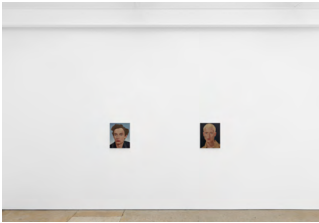
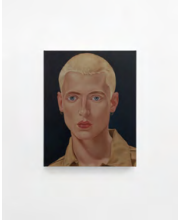
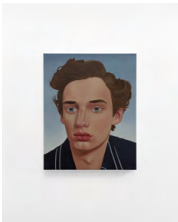
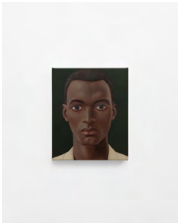
Peter Stichbury 'Soft Machines' June—July	Image Captions	
Image thumbnail	Caption	Courtesy & Photo credit
	Exhibition view, Peter Stichbury at Fine Arts, Sydney, 'Soft Machines', June–July 2025	Courtesy of the artist and Fine Arts, Sydney
	Exhibition view, Peter Stichbury at Fine Arts, Sydney, 'Soft Machines', June–July 2025	Courtesy of the artist and Fine Arts, Sydney
	Exhibition detail, Peter Stichbury, 'Athena Syn', 2024, Oil on linen, 50 x 40cm	Courtesy of the artist and Fine Arts, Sydney
	Exhibition view, Peter Stichbury at Fine Arts, Sydney, 'Soft Machines', June–July 2025	Courtesy of the artist and Fine Arts, Sydney
	Exhibition view, Peter Stichbury at Fine Arts, Sydney, 'Soft Machines', June–July 2025	Courtesy of the artist and Fine Arts, Sydney
	Peter Stichbury Parry (Psychogenic Adaptive Relay for Recursive Yaw) 2025 Oil on linen 50 x 40cm Signed, inscribed and dated verso	Courtesy of the artist and Fine Arts, Sydney
	Peter Stichbury Eugene Goostman 2025 Oil on linen 50 x 40cm Signed, inscribed and dated verso	Courtesy of the artist and Fine Arts, Sydney

Image thumbnail

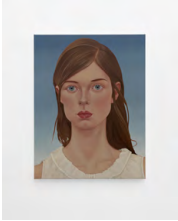
Caption

Courtesy & Photo credit



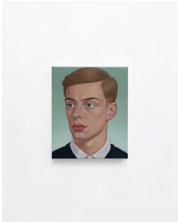
Peter Stichbury
Xenos (Xenogenic Entity Neural Observation System)
2025
Oil on linen
30 x 25cm
Signed, inscribed and dated verso

Courtesy of the artist and Fine Arts, Sydney



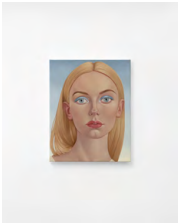
Peter Stichbury
Nettie 1983 (Neural Entity for Talking, Thinking, and Experiments)
2025
Oil on linen
77.5 x 60cm
Signed, inscribed and dated verso

Courtesy of the artist and Fine Arts, Sydney



Peter Stichbury
CALO (Cognitive Architecture for Liminaloid Operations)
2025
Oil on linen
30 x 25cm
Signed, inscribed and dated verso

Courtesy of the artist and Fine Arts, Sydney



Peter Stichbury
Athena Syn
2024
Oil on linen
50 x 40cm
Signed, inscribed and dated verso

Courtesy of the artist and Fine Arts, Sydney