

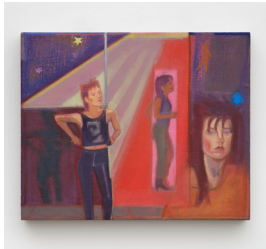
HANNAH HOFFMAN

Glawr

Merlin James, Caitlin MacQueen, Yuri Masnyj, Janice Nowinski,
Ellen Siebers, Susan Jane Walp

Organized by Caitlin MacQueen

July 5 – August 9, 2025



Caitlin MacQueen, *Regulars*, 2024-2025
Oil on linen wrapped panel
18 x 22 inches (45.7 x 55.9 cm)
(CMA0040)



Merlin James, *Landspace*, 2004
Acrylic on canvas
19 x 19 7/8 inches (48.3 x 50.5 cm)
(MJA0001)



Yuri Masnyj, *Crucible: Screens, Clarity, Chambers, Opacity*,
2024
Wood, concrete, steel, acrylic, foam, acrylic paint, oil
based paint with artist made shelf
13 5/8 x 6 3/8 x 8 inches (34.6 x 16.2 x 20.3 cm)
(YMA0001)



Susan Jane Walp, *Cut-open Pummelo with Knife, Black Walnut, Leaves, and Cork (Patience)*, 2025
Oil on linen
10 x 11 1/4 inches (25.7 x 28.6 cm)
(SWA0001)

HANNAH HOFFMAN



Ellen Siebers, *Birdsong Rapid*, 2025
Oil on birch panel
12 x 6 inches (30.5 x 15.2 cm)
(ESI0001)



Yuri Masnyj, *Crucible: Blue Hour*, 2025
Wood, concrete, steel, acrylic, foam, acrylic paint, oil
based paint with artist made shelf
13 x 5 ¾ x 8 inches (33 x 14.6 x 20.3 cm)
(YMA0002)



Janice Nowinski, *Bathers, after Cezanne*, 2025
Oil on board
12 x 16 inches (30.5 x 40.6 cm)
(JNO0001)