

Kakegawa Series, 2024

Shiseido is a Japanese company founded in 1872 in Tokyo by Arinobu Fukuhara, a former chief pharmacist of the Imperial Japanese Navy. It was Japan's first Western-style pharmacy. Under Arinobu's son, Shinzo Fukuhara, who was an artist and photographer, Shiseido focused on visual design and product standardization. Throughout the 20th century, Shiseido grew into a multinational corporation. This part of the Kakegawa series, photographed in 2023 at Shiseido's factory in Kakegawa, documents the production process of a lipstick.

NUT JOB (from the series Keywords: A Vocabulary of Culture and Society), 2025

Keywords: A Vocabulary of Culture and Society is an ongoing series, named after the 1976 publication by Raymond Williams, *Keywords: A Vocabulary of Culture and Society*, which mapped complex and contested histories and meanings of the English language. As Williams then stated, language continually evolves, a tendency now hyper-accelerated by social media.

Fine (part of Navigating the Future, related to Lithium Series), 2024

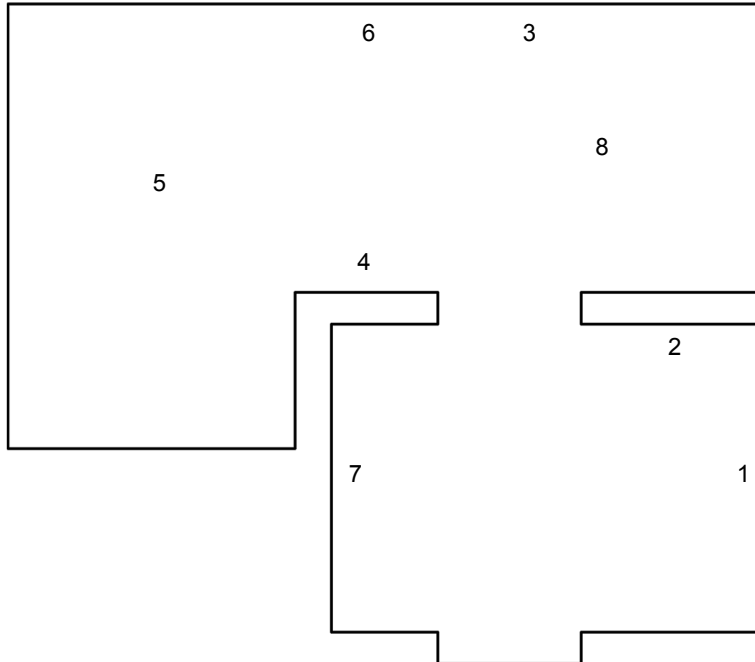
Maryam Jafri's installation *Navigating the Future* (2024) moves between the individual, societal, and global scale. It references lithium carbonate both as a longstanding treatment for bipolar and other mood disorders and as a central component in the rechargeable revolution. The title of the installation is derived from a 2022 US Department of Defense war game and conference focusing on climate change.

Orange Film II, 2023

56 Leonard Street in Manhattan, known as "Jenga Tower" is a residential skyscraper designed by Herzog & de Meuron, known for its staggered architecture. At its base stands *Cloud Gate* ("The Bean"), an outsize reflective sculpture by Anish Kapoor. Both the tower and sculpture are filmed through a glass of orange wine, producing a chromatic distortion that renders those surfaces blurred, abstract fields of orange-tinted light and color.

interference cube (beta), 2025

interference cube (beta) integrates the potential to interfere with multiple frequencies. Sending and receiving signals could be reduced to zero within a radius of up to 50 meters. This work can be understood within the lineage of cube-shaped artworks.



Valeria Herklotz

1 *Kakegawa series - 0424 04_24*, 2024,
c-print, 30 x 45 cm

2 *Kakegawa series - 0507 08_02*, 2024,
c-print, 30 x 45 cm

3 *Kakegawa series - 0424 12_02*, 2024,
c-print, 36,5 x 45 cm

4 *Kakegawa series - 0424 04_05*, 2024,
c-print, 30 x 45 cm

Noah Barker & Dora Budor

5 *Orange Film II*, 2023, HD video, color,
sound, 4 min

Maryam Jafri

6 *Fine*, 2024, Pill box, "END" key from vintage
Italian Keyboard. 11 x 2,5 x 2,5 cm

7 *NUT JOB*, 2025, cardboard on alu-dibond,
keyboard keycaps, 53,0 x 32,0 cm

Peter Ye

8 *interference cube (beta)*, 2025,
12 antenna signal jammer (TX-H12K), plexiglas
cube, 40 x 40 x 40 cm