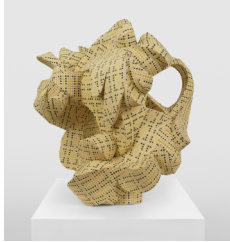


Post Times

(646) 454-0552 | 29 Henry St. NY, NY 10002 | info@post-times.com

MATERIAL INSTINCT

June 27 – August 9, 2025
Opening Reception: June 27, 6–8pm



Austin Ballard
Duomo in Widow and Eraser (DD24), 2024
Cane webbing, epoxy clay, textile dye
30 × 27 × 22 inches
76.2 × 68.6 × 55.9 cm



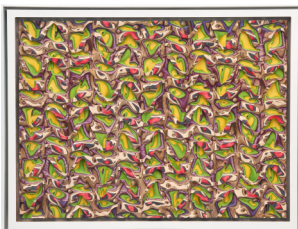
Michaela Bathrick
II, 2024
Cement, screws, stain
13 3/8 × 9 3/8 × 2 inches
34 × 23.5 × 5 cm



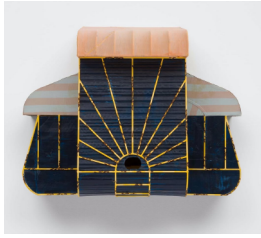
Miranda Fengyuan Zhang
Glitch, 2022
Hand woven cotton
84 × 40 inches
213.4 × 101.6 cm



Steph Gonzalez-Turner
Certain mornings, 2025
Plywood parquetry with oil paint, acrylic, UV printing
41 3/4 × 4 1/2 × 9 inches
106 × 11.4 × 22.9 cm



Ara Peterson
Untitled, 2023
Dyed veneer laminate in custom aluminum frame
26 1/2 × 35 × 1 3/4 inches
67.3 × 88.9 × 4.5 cm



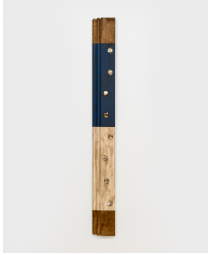
Greg Carideo

YHF, 2024

T-shirt, found shirt, painted cardboard, steel, paint, rust,
stitching, metal wire, found shoe heel

17 × 21 × 10 ⁵/₈ inches

43.2 × 53.3 × 27 cm



Michael Bala

Sunlight (Dust), 2025

Oil stain, acrylic, maple baseboard, hand picked seashells from Hawaii

60 × 6 ¹/₄ × 1 ³/₈ inches

152.4 × 15.9 × 4.1 cm



Florence Carr

Reverse, 2024

Cotton, steel

10 ⁵/₈ × 11 ³/₄ × ³/₄ inches

27 × 30 × 2 cm



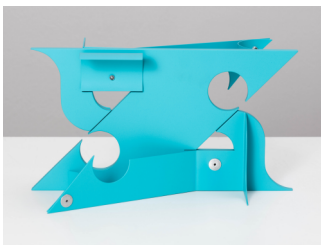
Lukas Geronimas

Puzzle Piece 12, 2023

Wood, puzzle, aluminum, cardboard, paint, fasteners, adhesives

33 × 33 × 1 ¹/₂ inches

83.8 × 83.8 × 3.8 cm



Matt Paweski

Study (Digi blue), 2019

Aluminum, aluminum rivets, vinyl paint

10 × 14 × 6 inches

25.4 × 35.6 × 15.2 cm



Richard Rezac

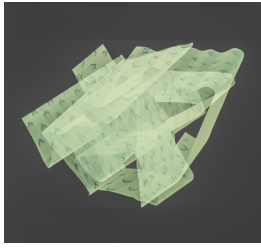
Untitled (24-05), 2024

Cast bronze, aluminum, cherry wood

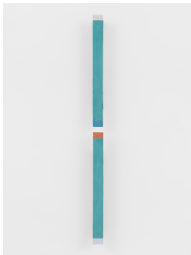
27 ¹/₂ × 23 × 3 inches

69.8 × 58.4 × 7.6 cm

Back Room



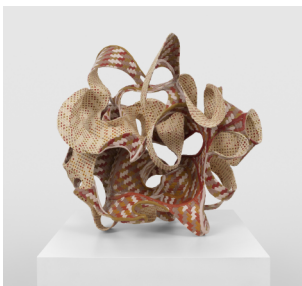
Blinn and Lambert
On vacation, 2020/2025
Two channel 35mm slide projection on loop
Dimensions variable



Graham Collins
Copse, 2025
Casein on hemp laid on ceramic
37 × 2 × 3 inches
94 × 5.1 × 7.6 cm



Amy Stober
Punk Style, 2024
Cast polyurethane, polyurethane pigments, dry pigments
15 × 9 × 14 ½ inches
38 × 22.9 × 36.8 cm



Austin Ballard
It Never Entered my Mind // Mumbler with Blind Rivets (VIII), 2025
Epoxy clay, cane webbing
24 × 18 × 24 inches
61 × 45.8 × 61 cm