

Introducing

NOON

Studio

Catalogue

Autumn 2023



NOON Projects is thrilled to introduce NOON Studio, a new space within the gallery dedicated to object d'art and functional pieces. The carefully selected artworks, made to be enjoyed at home, explore the space between art and design and function and abstraction.

Since its founding in 2022, NOON Projects has been committed to creating a welcoming environment for contemporary art and culture through exhibitions, happenings, and community events. NOON Studio expands the gallery's offerings by presenting artworks designed with human interaction in mind. These pieces are created using traditional or innovative craft techniques and laden with spiritual charge from their makers.

The pursuit of collecting and living with meaningful and beautiful objects adds unique expression to a life lived through art. NOON Studio's goal is to present a varying selection of home and design pieces, providing an opportunity to initiate or expand a collection of cherished objects.

Contact:
info@noon-projects.com
+1 971 341 6648



Presenting

**Ben Borden
James Cherry
Max Cleary
Vava Dudu
Audrey Leshay
Hertta Kiiski
Maddy Inez Leeser
Johanna Lundberg
Matt Momchilov
Simon Renggli
Laura Rule**



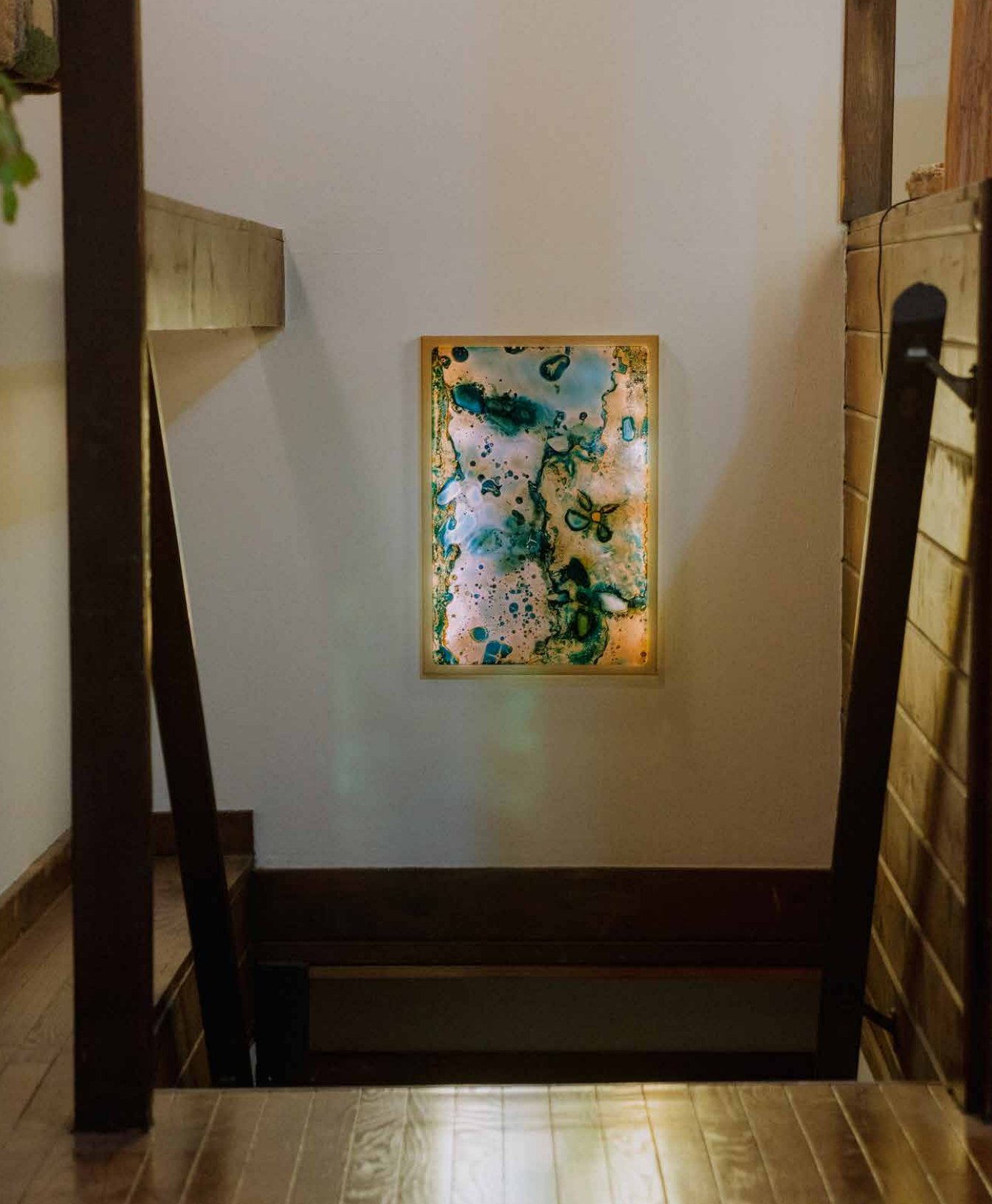
BEN BORDEN



CANDELABRUM (EVENT RPQ), 2023

Chemical reaction, salt crystallization, algae-based bio-plastic polymer heat adhered to tempered glass panels, paraffin wax candles, machine-bent steel
14 × 4 1/4 × 9 in / 35.6 × 10.8 × 22.9 cm





BEN BORDEN



REMNANT (EVENT RPR), 2023

Chemical reaction, salt crystallization, algae-based bio-plastic polymer heat adhered to tempered glass, LED light panel, paper composite artist frame.
22 1/2 × 15 1/2 × 1 in / 57.1 × 39.4 × 2.5 cm

BEN BORDEN



REMNANT (EVENT MKV), 2023
*Chemical reaction suspended in biopolymer, low iron acid
etch glass, compressed paper composite artist frame*
15 1/2 × 15 1/2 in / 39.4 × 39.4 cm

BEN BORDEN



REMNANT (EVENT MKV), 2022
*Chemical reaction suspended in biopolymer, low iron
acid etch glass, compressed paper composite artist frame*
8 × 16 × 1 in / 20.3 × 40.6 × 2.5 cm

JAMES CHERRY



INTERSECTION (LAMP), 2022
Blended Recycled Fibers, Glue, Eco-resin, Found Fabric, Paint, Corn Starch,
Brass, Polyurethane, LED Changeable Bulb, Lamp Parts and Dimmer
11 1/2 × 8 × 8 In / 29.2 × 20.3 × 20.3 cm
(Unique Object)



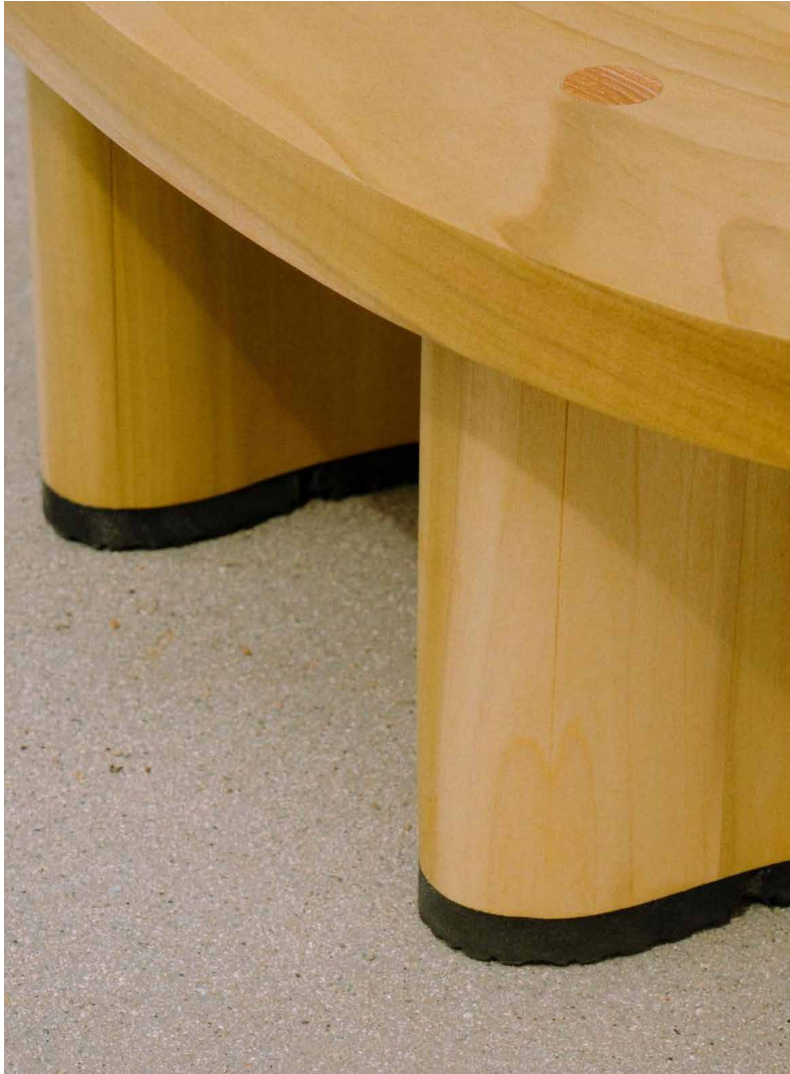


JAMES CHERRY



ECHO 1 (LAMP), 2022
*Blended Recycled Fibers, Glue, Eco-Resin, Found Fabric, Brass, Polyurethane,
LED Changeable Bulb, Lamp Parts and Dimmer*
15 × 8 × 6 3/4 In / 38.1 × 20.3 × 17.1 cm
(Open Edition)

MAX CLEARY

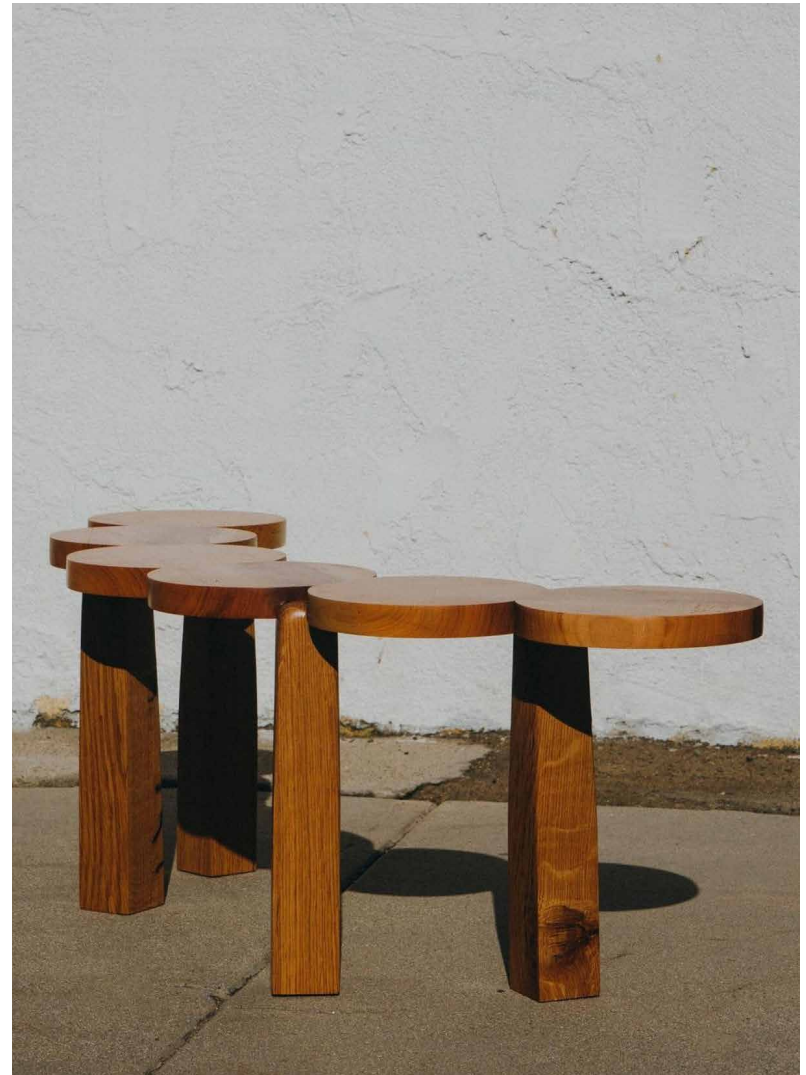


FOOT STOOL, 2023
poplar, oak, slippers
24 × 13 × 12 in / 61 × 35.6 × 30.4 cm





MAX CLEARY



BOZU BENCH, 2022
maple, white oak
32 × 18 × 12 In / 81.2 × 45.7 × 30.5
cm100

MAX CLEARY



BOZU STOOL, 2022
maple, douglas fir
16 × 8 × 14 in / 40.1 × 20.3 × 35.5 cm

MAX CLEARY AND AUDREY LESHAY



THE SMELL OF THE LIBRARY, 2023
Ash, graphite, acrylic gouache
2.5 × 2.5 × 16 in / 6.5 × 6.5 × 40.5 cm

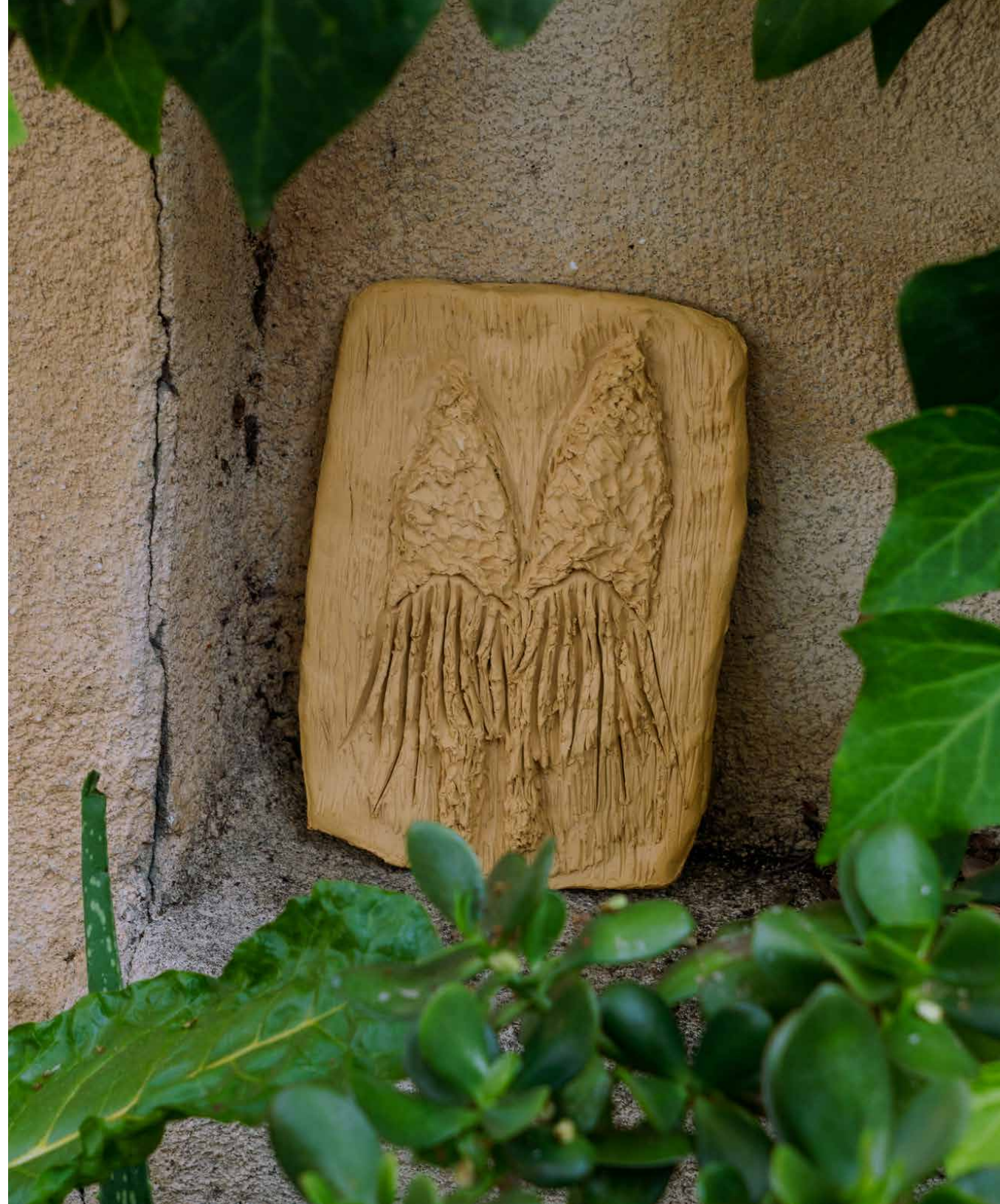
VAVA DUDU



LANTERN, 2023
Rice paper shade, acrylic paint, lamp parts
30 ¾ × 31 ½ In / 78 × 80 cm



HERTTA KIISKI



BABY PLANT SOUTH, 2021 (ABOVE)
BABY PLANT NORTH, 2021 (RIGHT)
Air hardening clay
5 1/2 × 8 1/4 in / 4 × 21 cm

HERTTA KIISKI

BABY PLANT EAST, 2021 (LEFT)
BABY PLANT WEST, 2021 (RIGHT)
Air hardening clay
5 1/2 × 8 1/4 in / 4 × 21 cm





MADDY INEZ LEESER



MEMORY JUG (ROUND), 2022
Ceramic
16 × 11 × 11 in / 40.5 × 28 × 28 cm

MADDY INEZ LEESER

MEMORY JUG (ANGLED), 2022
Ceramic
18 × 12 × 12 in / 45.7 × 30.5 × 30.5 cm





MADDY INEZ LEESER

MEMORY JUG #5, 2022
Ceramic
8 × 6 1/2 × 6 1/2 In / 20 × 16.5 × 16.5 cm

MEMORY JUG #7, 2022
Ceramic
8 × 5 1/2 × 5 1/2 In / 20 × 14 × 14 cm

JOHANNA LUNDBERG



SNAPSILASI, 2022
Glazed Ceramic, Set of 8
Dimensions Variable



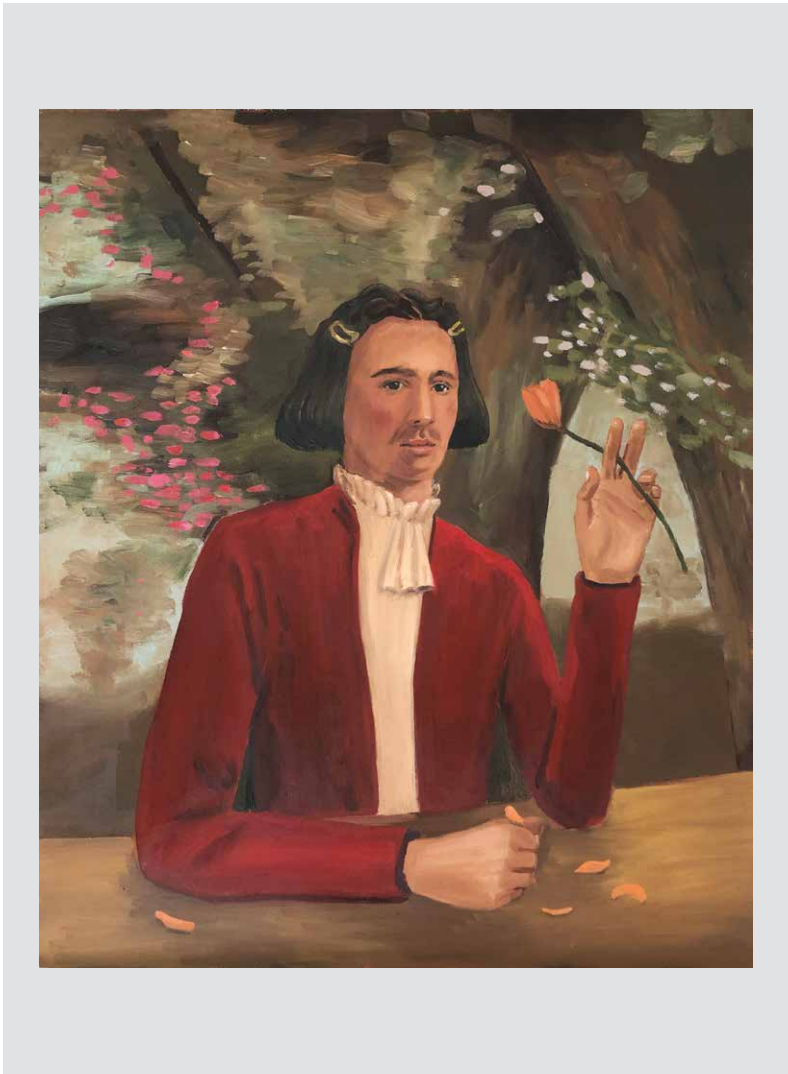


MATT MOMCHILOV



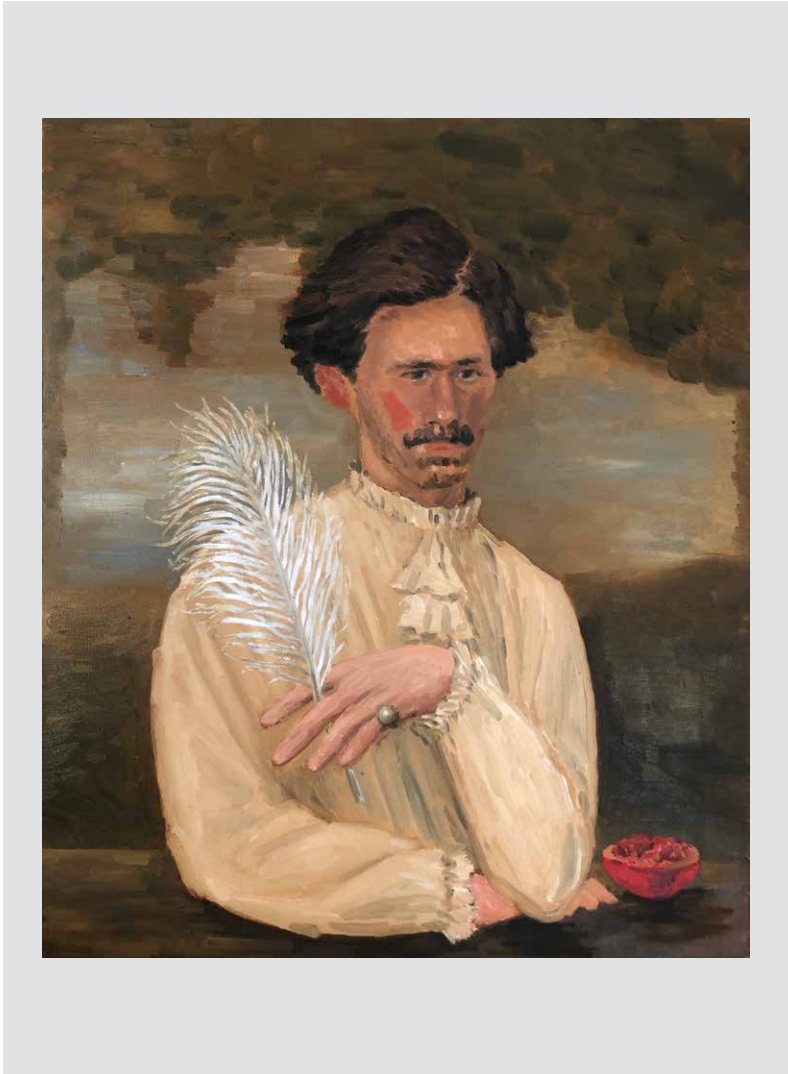
REFLECTING ON THE NATURE OF THINGS, 2023
Oil on Canvas
50.8 × 61 cm / 20 × 24 in

MATT MOMCHILOV



CONSULTING THE FLOWERS, 2023
Oil on canvas
20 x 24 in / 50.8 x 61 cm

MATT MOMCHILOV



MAKING LIGHT OF EARTHLY TROUBLES, 2023
Oil on canvas
20 x 24 in / 50.8 x 61 cm

SIMON RENGGLI



FACIAL SERIES (1-8), 2021-2022
Glazed Ceramic
Dimensions Variable



SIMON RENGGLI



FACIAL SERIES (1-8), 2021-2022
Glazed Ceramic
Dimensions Variable



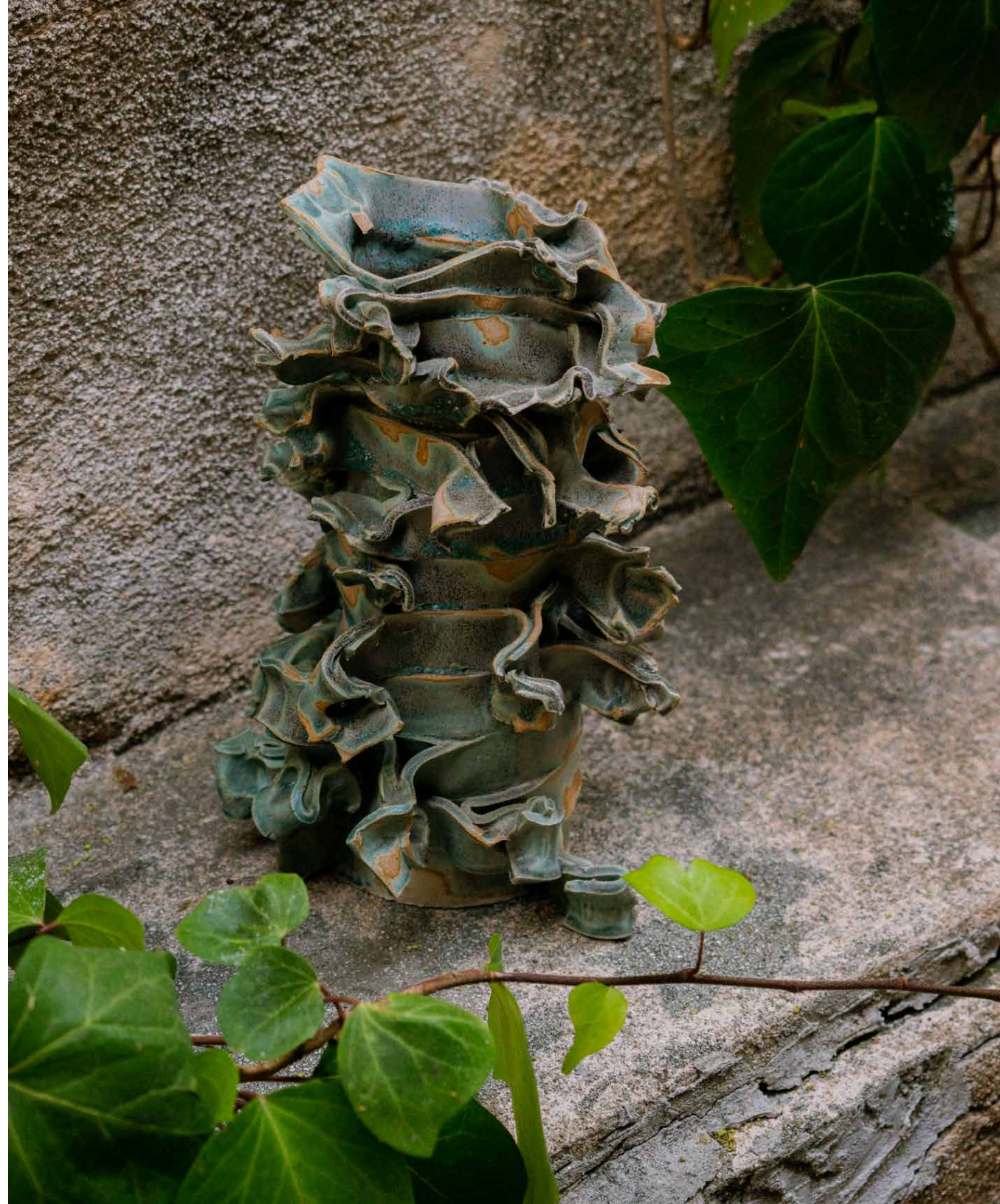
LAURA RULE

THE DAY I MET MARIA, 2019
Clay body with glaze (Vessel / Non Functional)
12.9 × 8.2 × 8.2 in / 33 × 21 × 21 cm

LAURA RULE



25INCH WAIST, 2017
Clay body with glaze (Vessel / Non Functional)
27 × 17 × 17 cm / 10.6 × 6.6 × 6.6 in



Ben Borden

(b. 1985 Corpus Christi, Texas) uses industrial processes and organic materials to create closed systems of control and preservation reflective of impermanence and faith. Ben teaches in the Media Design Practices MFA program at ArtCenter College of Design in Los Angeles.

James Cherry

(b. 1996, Chicago, Illinois) received his BFA from Bard College in 2018 and currently resides in Los Angeles. Cherry’s work examines the relationship between personal and public information through material manipulation, while primarily practicing within sculpture and drawing. Meditative and repetitive processes are used to both present and disguise intimate symbols of the human experience

Max Cleary

(b. 1991, Honolulu) is a Los Angeles based artist working with photography, sculpture. He received his MFA from the University of California Los Angeles in 2019. His work has recently been exhibited at Winston’s (Los Angeles), Kaiao Space (Honolulu), NOON Projects (Los Angele), Piazza Palazzo (Los Angeles), Helen J Gallery (Los Angeles), Riviera Parking (Santa Barbara), and The Fulcrum Press (Los Angeles).

Vava Dudu

(b. 1970s in France). Works and lives between Paris and BerlinVava Dudu is a parisian figure with one hand over Berlin Her work deals with poetry and a very personal post-cubist approach to drawing, she writes and draws on any support available and as a decadent glam-rock star, after the wall she will continue painting on her face. The language of Dudu’s work presents a completely developed chart of recurrent signs: the Eiffel Tower surrounded by long breasts, hearts and crying faces with widely open mouths. Her work is a candid song for the desperation of the contemporary urban life. Dudu is the leader singer in the neo-punk band La Chatte, she has exhibited her clothes in showrooms around Europe and her catwalks are an an- them to the underground. Her work has been presented in mayor group exhibitions and performances in Palais de Tokyo (FR), Le Confort Moderne (FR) and Komplot (BE).

Audrey Leshay

(b. 1997, LA) is a Los Angeles based painter and tattooer. Leshay received her BA in Fine Art from the University of California Los Angeles in 2019. Her work has been exhibited at the Los Angeles Municipal Art Gallery, Punto Lairs (Los Angeles), Piazza Palazzo (Los Angeles), and Heaven Gallery (Chicago).

Hertta Kiiski

(b. 1973) The practice of Finnish artist Hertta Kiiski moves seamlessly between photography, video, textiles, and installation. Known for her immersive and mixed-media installations – Kiiski’s work addresses complex relationships with the planet and ways to coexist with other species and with the environment. The works exist in a framework of love – the representation of interrelations between humans and other-than-humans. In addition to working with animals, she has also collaborated for over a decade with her daughters and niece. Kiiski creates spaces for seeing, breathing, and listening with all senses working through hospitality and sensitivity to space, even dramaturgically.

Maddy Inez Leeser

(b. 1993) is a multidisciplinary artist working in sculpture, ceramics and printmaking. Maddy attended the Pacific Northwest College of Art in Portland, Oregon and currently resides in Los Angeles.

Maddy uses the elements of earth, water and fire to investigate themes of the body and healing. Drawing inspiration from mythology, generational magic, and herbal practices she processes trauma through clay. Her creative practice also includes the recurring themes of water, its history, lore and its relationship to power. Her vessels are votives of ancestral alchemy, memory and process.

Johanna Lundberg

(b. 1982, Åland, Finland) is a Stockholm-based designer for print and digital. Whilst her graphic design work is conceptual, controlled and rehearsed, her ceramics work is entirely intuitive—the forms impulsive and secondary to the act of making. Lundberg has a BA (Hons) in Graphic Design and Illustration, London College of Communication, University of the Arts London, from where she graduated in 2008. She occasionally engages in public discussions and teaches on the topic of digital design. Exhibitions include ARS17, Kiasma, Helsinki, 2017–18, The Post-Human Era Became A Girl, South London Gallery, 2014 and Mänttä Art Festival, Finland, 2014, together with longtime collaborator artists Jenna Sutela and Vincent de Belleval.

Matt Momchilov

(b. 1986) is an artist living and working in Los Angeles. He received his BFA from the California College of The Arts in 2008, but considers himself self-taught as he has spent the last 10 years actively un-learning his formal conditioning, inherited priorities, and returning to the freedom of a beginners mind. He has exhibited his work nationally and internationally, won awards, been featured in magazines, but is most proud of being a conscious participant in the production of joy. He loves you.

Simon Renggli

(b. 1990, Lucerne, Switzerland) is a Los Angeles based artist and graphic designer specializing in visual communication. His studio practice focuses on faces and sculptural masks exploring expressions at the fringe of human experience from fear to love to power to sexuality. Renggli grew up in Lucerne, Switzerland where mask making is part of an ancient tradition for the annual carnival, Luzerner Fasnacht. Renggli’s design practice focuses on print and digital design for cultural and commercial clients in the art, interior design, and hospitality sector including The Sea Ranch Lodge, Billy Cotton, NOON Projects, and Tiwa Select.

Laura Rule

(b. 1975) is a British-born, California-based artist whose shape-shifting, hand- built ceramic sculptures evoke another time and universe. Self-taught and using clay as an experimental material - while exploring its properties and the process of ever-changing objects - she came to the realization that the pieces connected to a reality beyond the observable physical universe. Through her dedicated art practice, she continues to explore creativity through boundless alchemy.

NOON Projects

NOON Projects is a gallery in Chinatown, Los Angeles. Our program showcases artists who work from the heart, with a focus on queerness, the divine, the natural world, craft, and social practices. We host an ongoing program of dinners, concerts, meditation groups, and community happenings.

NOON Projects was founded in 2022 by Ryan Noon. He has a background in cultural production in the fashion, art, and music industries having designed for Alexander McQueen, Henrik Vibskov, NIKE, Beyoncé, and Adidas, and his own eponymous London Fashion Week label. He has created programs with Samin Nosrat, Ryan Holliday, Mary Lattimore, and Tom Sachs among many others.

Noon believes in compassion over competition, that the future is driven by female, queer, and intuitive energies, and that there is enough space for all of humanity to live together in peace and prosperity at their highest potential and vibration.

Creative Direction + Curation: Ryan Noon
Photos: Max Cleary
Stylist: Claire Beaumont
Gallery Manager: Darren Cortez

Special thanks to Alex Brookhart

NOON Studio
info@noon–projects.com
+ 1 971 341 6648

951 Chung King Road
Los Angeles, CA 90012
noon–projects.com