

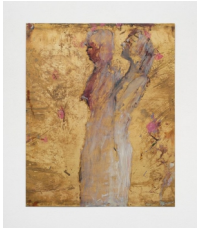
François Ghebaly



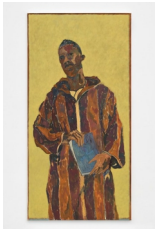
Heidi Bucher, *Das Wundband*, 1979, Textile, latex, and mother of pearl pigments. 61 × 38.5 inches (155 × 98 cm.) Photo: OnArt Studio



Cato Ouyang, *Untitled (impact, dimension)*, 2024, Cedar, hedge wood, maple, soapstone, sheetrock, aluminum, acrylic gel transfer, found desk, wire mesh, rice paper, PVA, textile, studio detritus, hardware, oil, acrylic, and graphite on linen. 68 × 20 × 46 inches (172.5 × 51 × 117 cm.) Courtesy of the Artist and Night Gallery, Los Angeles. Photo: Sebastiano Pellion de Piers



Willa Wasserman, *Figure with roses pinned to curtain*, 2025, Oil on bronze. 36 × 29 inches (91 × 74 cm.) Courtesy of the Artist and François Ghebaly, Los Angeles, New York. Photo: Paul Salveson



Ludovic Nkoth, *Yellow Gospel*, 2025, Oil on canvas. 72 × 36 inches (183 × 91.5 cm.) Courtesy of the Artist and François Ghebaly, Los Angeles, New York. Photo: Paul Salveson



Joanne Burke, *The Hour of the Star*, 2025, Water casting rubbed and etched on aluminum. 8.5 × 16 inches (framed) [22 × 41 cm. (framed)] Courtesy of the Artist and François Ghebaly, Los Angeles, New York. Photo: Paul Salveson



Gwen John, *Two Women in Hats*, c. 1925, Pencil on paper. 6 × 4.5 inches (15 × 11.5 cm.) Courtesy François Ghebaly, Los Angeles, New York. Photo: Brad Farwell

François Ghebaly



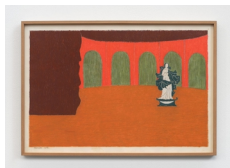
Womens History Museum, *Animam Agere*, 2024, Taxidermy White Ringneck Dove and Saddleback Homing Pigeon, leather, 1950s Exquisite Form advertising bust. 23 × 22 × 16 inches (58.5 × 56 × 40.5 cm.) Courtesy of the Artist and François Ghebaly, Los Angeles, New York. Photo: Paul Salveson



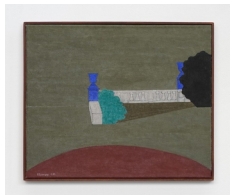
Joanne Burke, *Margaret*, 2023, Platinum glazed ceramic, washed woven silk and metal thread, bronze, .925 silver. 16 × 9.5 × 7 inches (41 × 24 × 17.5 cm.) Courtesy of the Artist and ADZ, Lisbon, Portugal.



Alix Vernet, *60/40*, 2025, Neon. Dimensions variable. Courtesy of the Artist and François Ghebaly, Los Angeles, New York. Photo: Paul Salveson



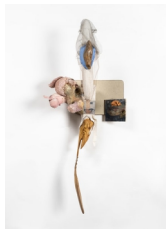
Eleonore Koch, *Untitled*, 1972, Pastel and graphite on paper. 17.5 × 25 inches (44 × 64 cm.) Courtesy François Ghebaly, Los Angeles, New York. Photo: Paul Salveson



Eleonore Koch, *Memorial Gardens I*, 1988, Tempera on canvas. 24 × 29 inches (60.5 × 73 cm.) Courtesy François Ghebaly, Los Angeles, New York. Photo: Paul Salveson



Craig Jun Li, *"Untitled" (transference, after Hervé Guibert)*, 2025, SX-70 films, velvet fabric swatches, artist's frame. 25.25 × 20.25 inches (64 × 51.45 cm.) Courtesy of the Artist and François Ghebaly, Los Angeles, New York. Photo: Paul Salveson

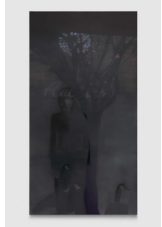


Cato Ouyang, *grief volume (Powder Mill; Anvil Ct; Mulberry and Grand)*, 2023, Textile, school desk top, steel, brass, hardware, hedge wood, pine, plaster, epoxy clay, acrylic gel transfer, oil paint on panel, drywall panels, soapstone. 55 × 22 × 12 inches (140 × 56 × 30.5 cm.) Courtesy of the Artist and Lyles & King, New York. Photo: Jason Mandella

François Ghebaly



Marie Laurencin, *Tête de jeune fille avec un noeud papillon rose*, c. 1920, Colored pencils on cream wove paper. 6.5 × 5 inches (16.5 × 12.7 cm.) Courtesy François Ghebaly, Los Angeles, New York. Photo: Paul Salveson



Ant Łakomsk, *Opening*, 2025, Oil on canvas. 67 × 35.5 inches (170 × 90 cm.) Courtesy of the Artist. Photo: Bartosz Zalewski



Quay Quinn Wolf, *It didn't matter how much I cleaned or how often I refreshed the flowers*, 2025, 30-gallon plastic drum, water, white carnations, varnish on cotton-velvet, disinfectant spray, lavender cleaning products, plant sediment, essential oils. Dimensions variable. Courtesy of the Artist and François Ghebaly, Los Angeles, New York. Photo: Paul Salveson



Heidi Bucher, *"Herrenzimmer" Die sechs Stühle*, 1979, Latex, cotton, mother of pearl pigment. 67 × 29.5 inches (170 × 75 cm.) Photo: OnArt Studio



Mara Hassan, *parliaments with tree on june 24, 2025*, 2025, Photograph on vinyl transfer, inkjet print on 11,000 sheets of vellum paper, latex condom. Dimensions variable. Courtesy of the Artist and François Ghebaly, Los Angeles, New York. Photo: Paul Salveson



Willa Wasserman, *Umbrella in a pond*, 2019, Brasspoint on linen. 80 × 71 inches (203 × 180.5 cm.) Courtesy of the Artist and François Ghebaly, Los Angeles, New York. Photo: Paul Salveson



Craig Jun Li, *Sometimes I hear every beat of your silence. I do*, 2025, Restored antique 120 hour bank vault time locks, wall-mounted aluminum cigarette and ash receptacles. Each: 13 × 3.5 × 4.5 inches (33 × 9 × 11.5 cm.) Courtesy of the Artist and François Ghebaly, Los Angeles, New York. Photo: Paul Salveson

François Ghebaly



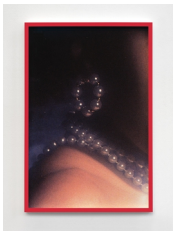
Heidi Bucher, *Balcony of Palacio Ico*, 1990, Latex and cotton. 52 × 84.25 inches (132 × 214 cm.) Photo: OnArt Studio



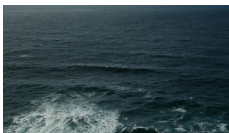
Hanna Umin, *Septimus (Pitch)*, 2025, Cast epoxy resin, safety glass, uranium glass, wire, carbon fiber, worn heel, ground bolt, light socket, cicada shell, tuning fork. 4.5 × 24 × 14 inches (10 × 61 × 35.5 cm.) Courtesy of the Artist and François Ghebaly, Los Angeles, New York. Photo: Paul Salveson



Gretta Sarfaty, *Transformações II (Tryptich)*, 1976, Oil on canvas. 33 × 72 inches (84 × 183 cm.) Courtesy of the Artist and François Ghebaly, Los Angeles, New York. Photo: Paul Salveson



Karice Mitchell, *Adorned III*, 2023, Archival Inkjet Print Mounted on Aluminum. 36 × 24 inches (91.5 × 61 cm.) Courtesy of the Artist and François Ghebaly, Los Angeles, New York. Photo: Paul Salveson



Lisa Tan, *Waves*, 2014-2015, HD video with sound, color. 19 minutes 23 seconds. Courtesy of the Artist.



Quentin James McCaffrey, *Seascape with Sunbeam*, 2025, Oil on canvas over wood panel. 16 × 13 inches (41 × 33 cm.) Courtesy of the Artist and François Ghebaly, Los Angeles, New York. Photo: Paul Salveson



Tran Truong, *Mirror*, 2025, Acrylic on canvas. 48 × 35 inches (122 × 89 cm.) Courtesy of the Artist and François Ghebaly, Los Angeles, New York. Photo: Paul Salveson



Danica Lundy, *Ate it anyway*, 2025, Oil on canvas. 60 × 60 inches (152 × 152 cm.) Courtesy of the Artist and François Ghebaly, Los Angeles, New York. Photo: Paul Salveson

François Ghebaly



Hanna Umin, *Septimus (Gate)*, 2025, Cast epoxy resin, soldered brass, found objects, cicada shell. 17.5 × 6 × 1.5 inches (44.5 × 15 × 4 cm.) Courtesy of the Artist and François Ghebaly, Los Angeles, New York. Photo: Paul Salveson



Installation view, *Correspondences*, François Ghebaly, Los Angeles, 2025. Courtesy of the Artists and François Ghebaly, Los Angeles, New York. Photo: Paul Salveson