



Tessa Lynch | Arena
13 September – 18 October 2025

Gallery 1

1. Tessa Lynch and Rachel Adams (Gabe Care),
Wipe Clean: The Scots Magazine, 2023
Bespoke mirrors panels with acid etch print
85 x 147cm each panel

Gallery 2

1. Tessa Lynch
Soft Parade (I), 2025
Spray paint and chalk on aluminium
59.4 cm x 84.1 cm

2. Tessa Lynch
Soft Parade (II), 2025
Spray paint and chalk on aluminium
59.4 cm x 84.1 cm

3. Tessa Lynch
Soft Parade (III), 2025
Spray paint and chalk on aluminium
59.4 cm x 84.1 cm

4. Tessa Lynch
Soft Parade (IV), 2025
Spray paint and chalk on aluminium
59.4 cm x 84.1 cm

5. Tessa Lynch
Soft Parade (V), 2025
Spray paint and chalk on aluminium
59.4 cm x 84.1 cm

Gallery 3

1. Tessa Lynch
Underpin, 2025
Hand woven bricks
Size variable

2. Tessa Lynch
Arena - Stalled Space - Table for a Community,
2022
Wood, paint, steel, plants
110cm x 120cm x 3cm (height can be
changed)

3. Tessa Lynch
Holding it Together, 2025
Site-specific vinyl mural
Size variable

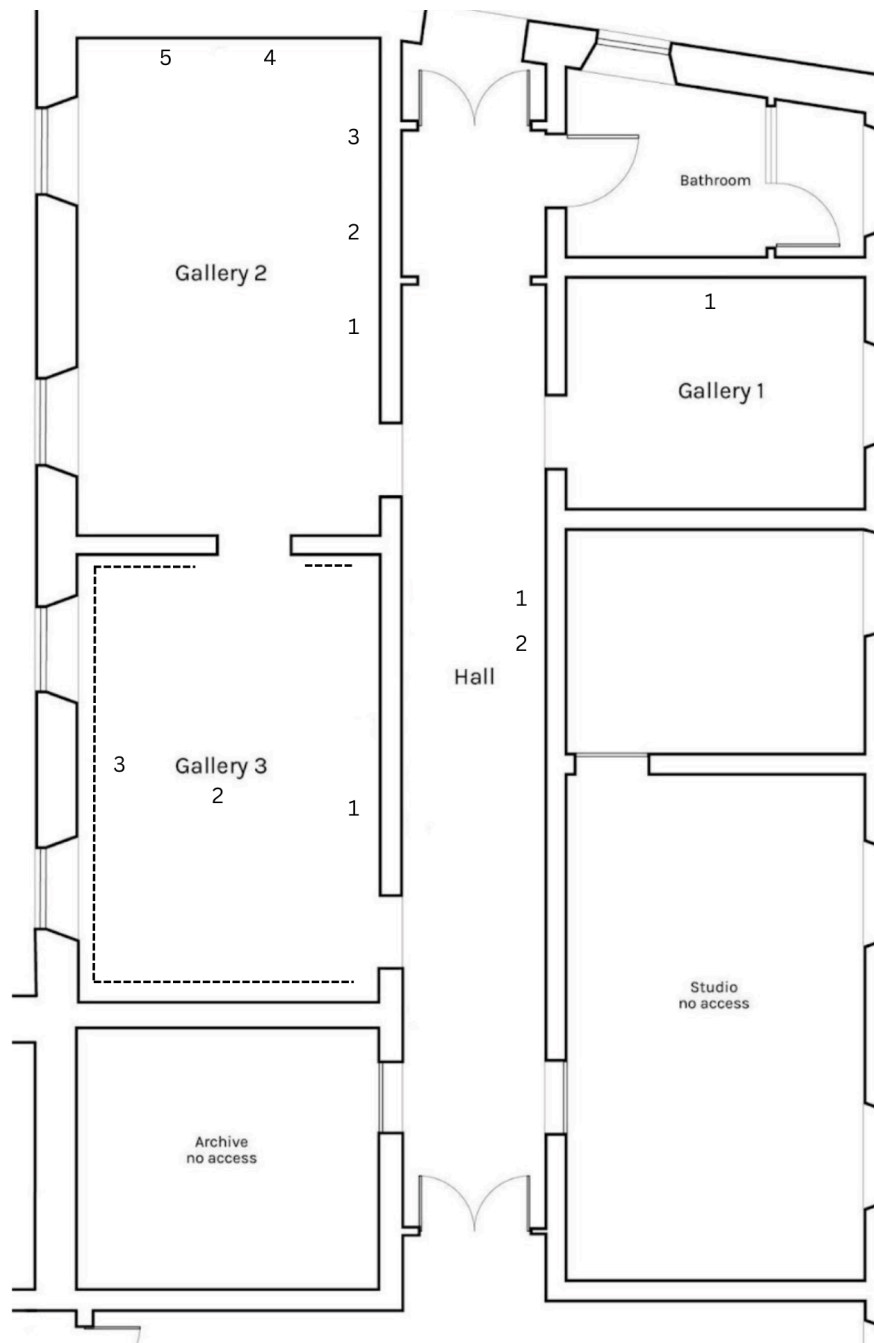
Hall

1. Tessa Lynch
Horizon (I), 2025
Graphite and ink on muslin
26 x 20 cm

2. Tessa Lynch
Horizon (II), 2025
Graphite and ink on muslin
26 x 20 cm

In making *Arena* Tessa Lynch reconnected with the core of her practice: print making and drawing. Composed from a series of etched mirrors (created with Rachel Adams for the exhibition *High on the Summit Ridge*, Travelling Gallery, 2023), newly made chalk on spray painted aluminium panels, sculptural objects and site-specific gestures, *Arena* unfolds as an example of how Lynch thinks through the vitality of print and line.

Lynch's artworks have a graphic quality, often deadpan and direct. In *Arena* this manifests as a playful scenario, where fragments of industrious redevelopment are redirected, through a feminist methodology. Together the artworks point towards an alternative view and new ways of being in the urban realm.



Tessa Lynch (b. 1984, Surrey) received a BA Hons in Tapestry from Edinburgh College of Art in 2007, which included an exchange to Kyoto Saga University of the Arts, Japan. In 2013 she received a MFA from Glasgow School of Art. Lynch's practice is grounded in print making and drawing, foundations which can evolve into sculptural and performative scenarios. Blurring the line between direct and uncanny references, Lynch's artworks are guided by a feminist approach to re-reading urban space. Lynch is specifically interested in how an artistic practice can intervene in a public setting or used to galvanise a new awareness of the urban realm and its emotional impact.