

# Unconcealedness

Matt Paweski  
Carla Weeks

# Matt Paweski

*DUNES*





*DUNES*

*Screen (Spring)*, 2025  
Euro beech hardwood, aluminum,  
copper rivets, vinyl paint, wax  
14H x 15W x 4D"





*DUNES*

*Screen (Fall)*, 2025  
Euro beech hardwood, aluminium, copper  
rivets, vinyl paint, wax  
48.3 x 35.6 x 10.2 cm / 19 x 14 x 4 in





*DUNES*

*Screen (Winter)*, 2025  
Euro beech hardwood, aluminium, copper rivets, vinyl  
paint, wax  
22.9 x 35.6 x 10.2 cm / 9 x 14 x 4 in





*DUNES*

Fall, 2025  
Aluminum, copper rivets, vinyl paint  
14H x 12W x 1.5D"



*Rain (in window)*, 2025  
Aluminum, copper rivets, vinyl  
paint  
22H x 18W x 1.5D"

# Carla Weeks

*DUNES*

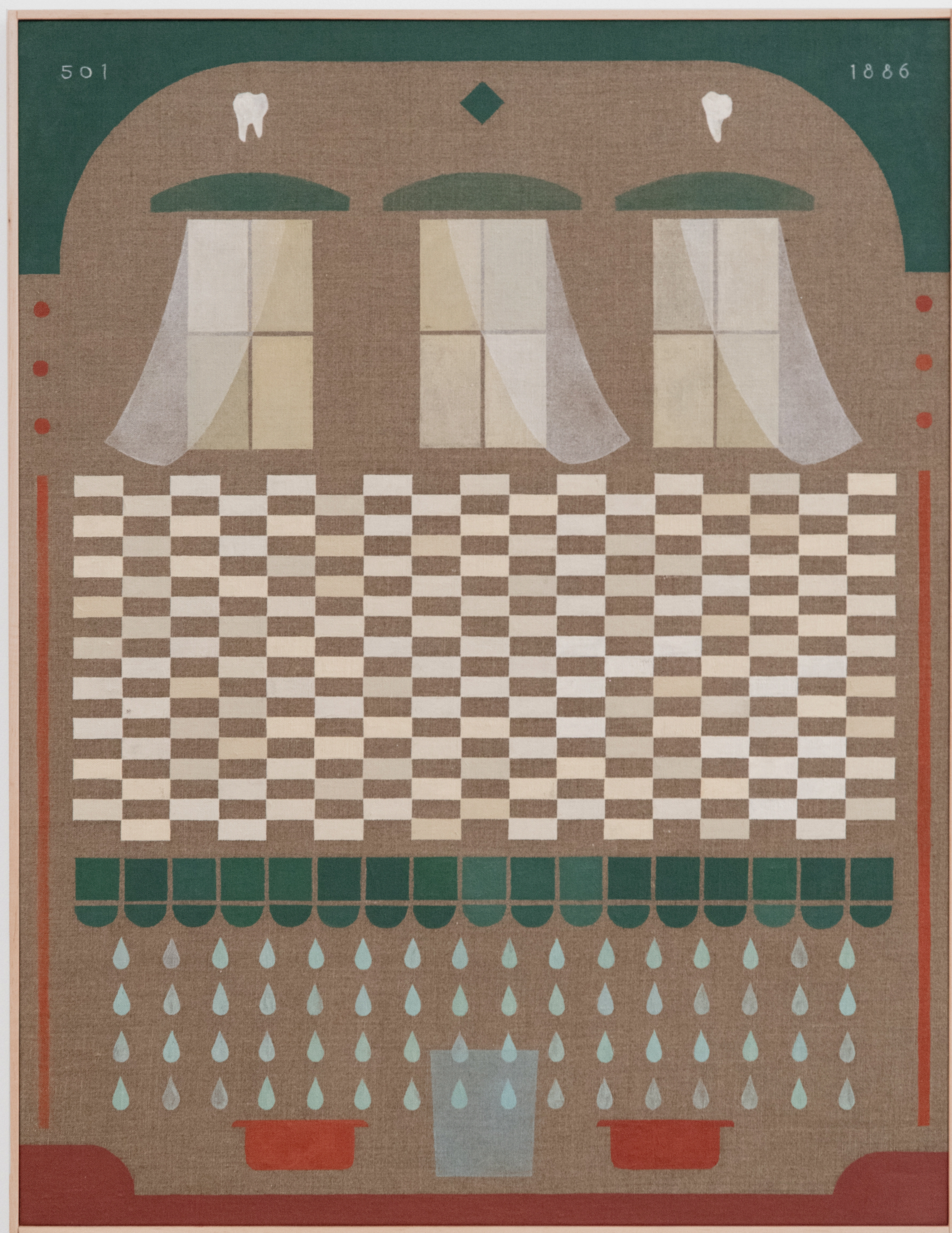


*DUNES*



*Forest Floor*, 2025  
oil on linen  
24" x 31"  
framed in maple

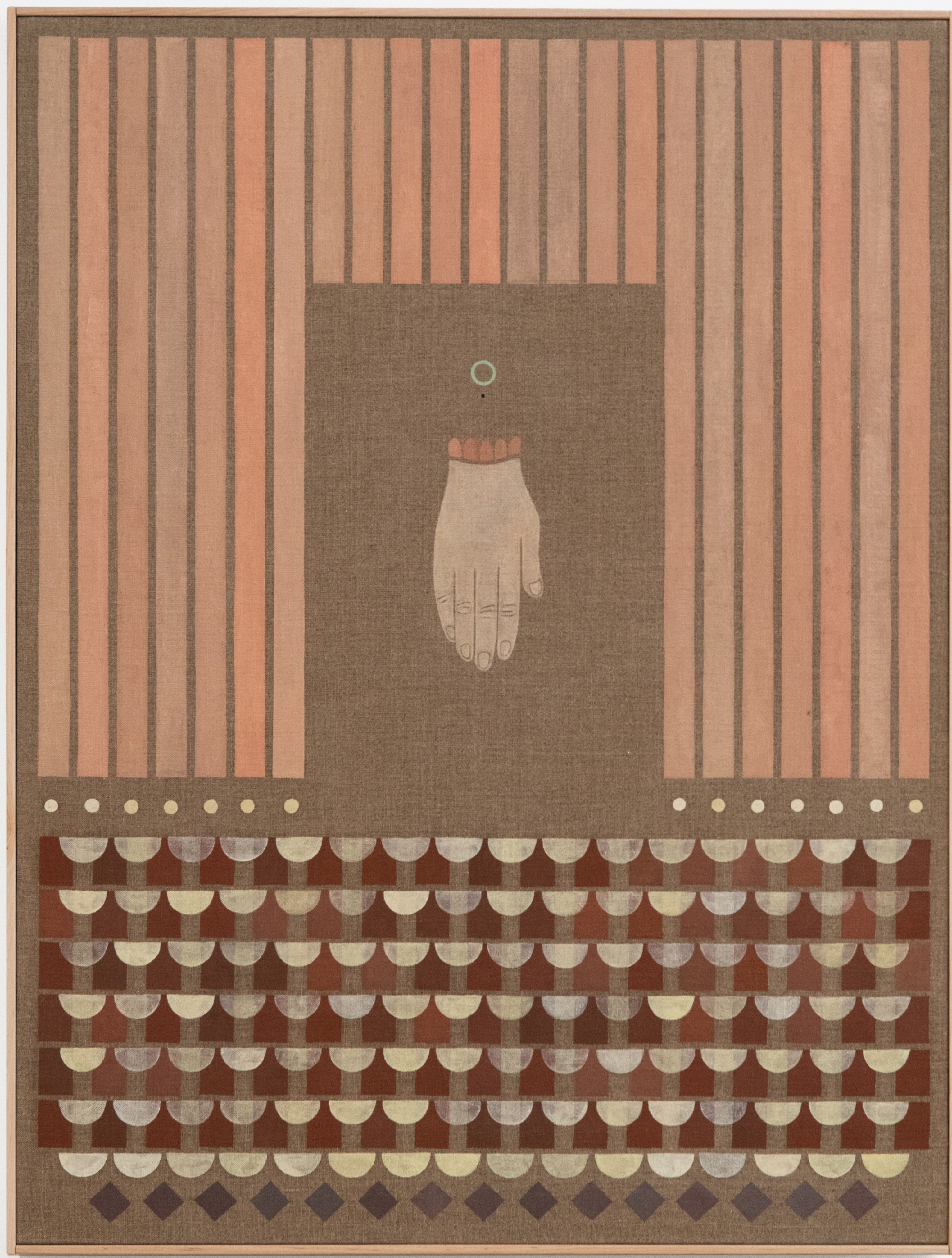




*DUNES*

*Summer Storm, 2025*  
oil and chalk on linen  
24" x 31"  
framed in maple



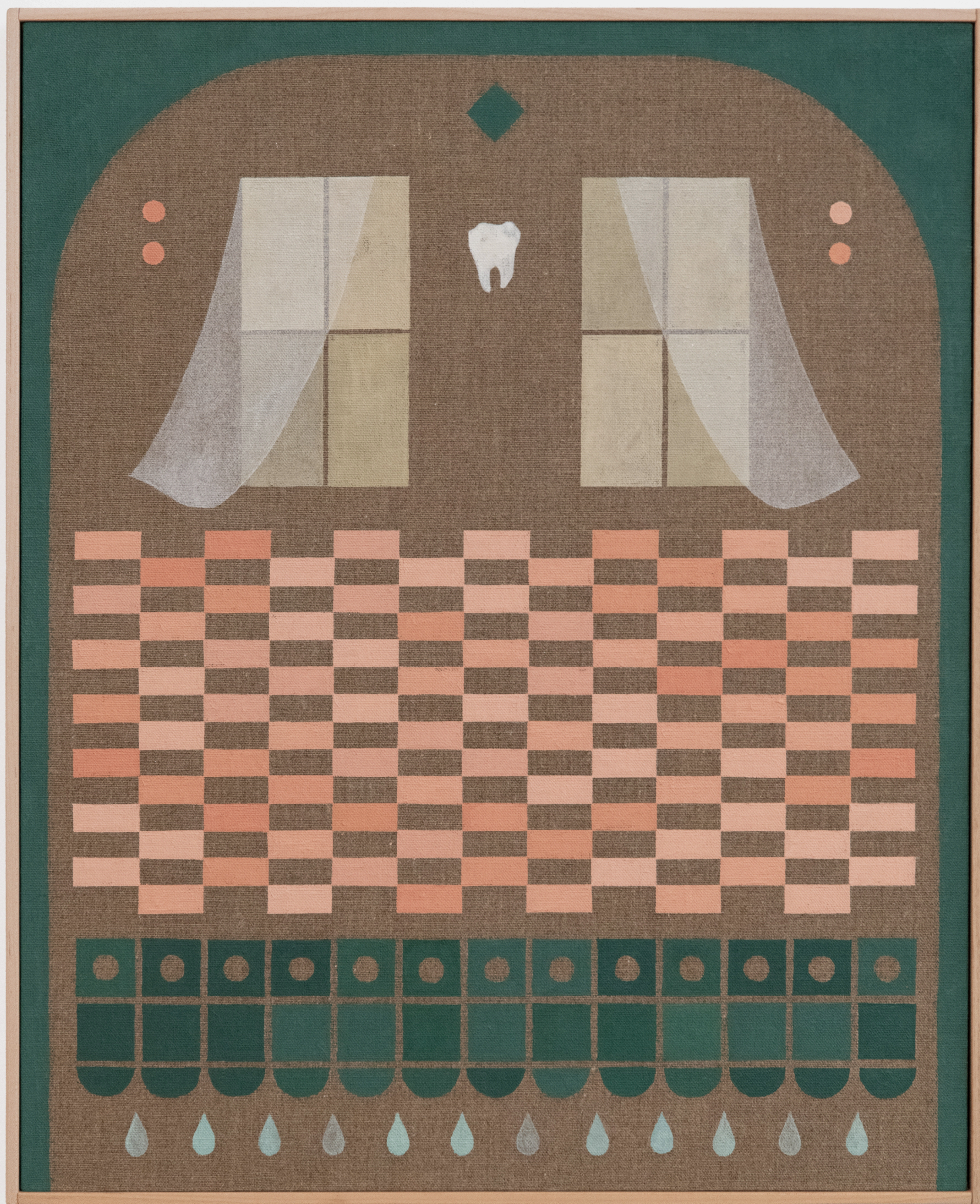


DUNES

*Hand Prayer (Right)*, 2025  
oil on linen  
26" x 34"  
framed in maple



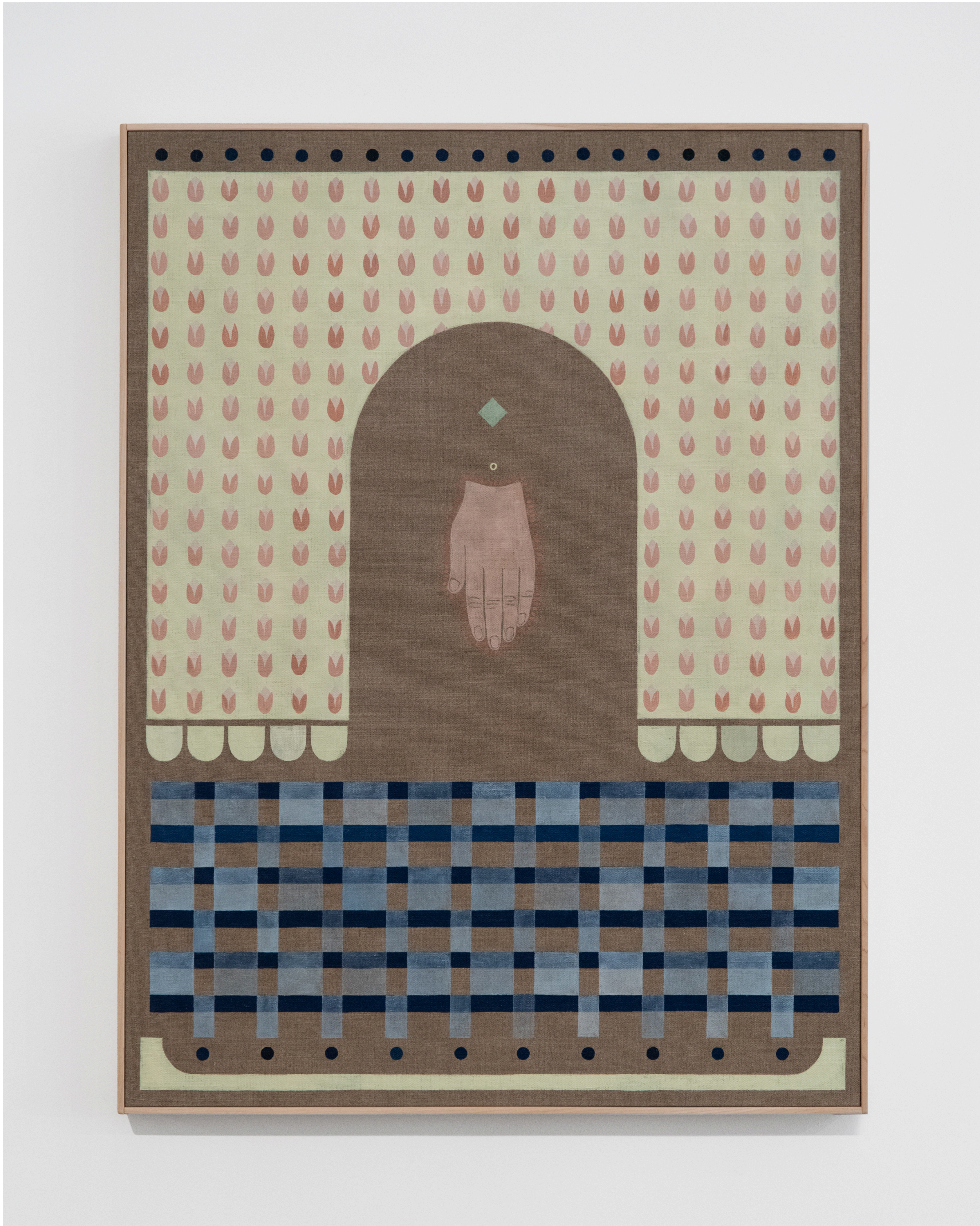
*DUNES*



*Denture Factory (Pink Bricks)*, 2025  
oil on linen  
18" x 22"  
framed in maple



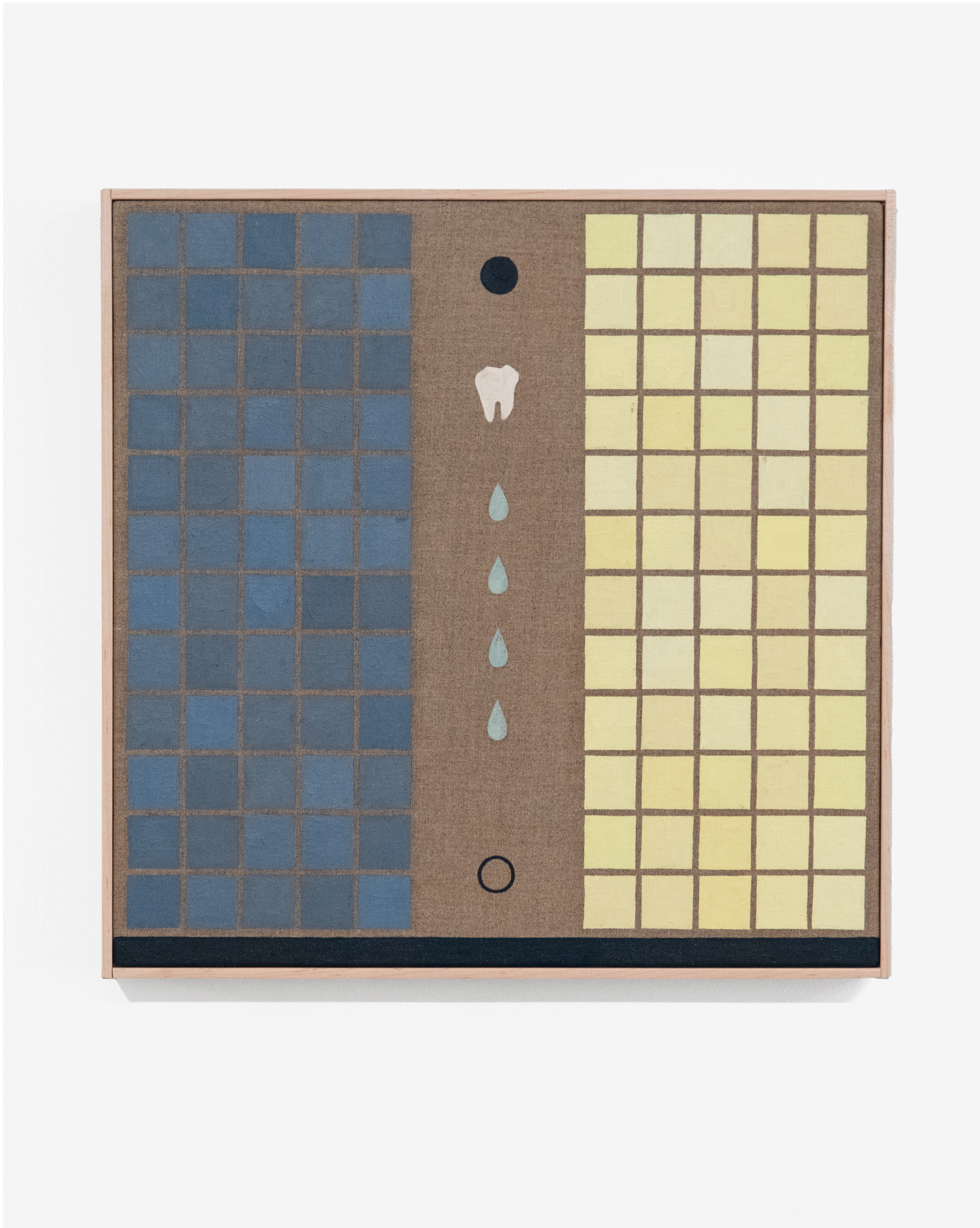
*DUNES*



*Hand Prayer (Left)*, 2025  
oil on linen  
26" x 34"  
framed in maple



*DUNES*



*Collecting Teeth II*, 2025  
oil on linen  
17.5" x 17.5"  
framed in maple





*Cherry Tree Tapestry I, 2025*  
oil on linen  
48" x 72"  
framed in maple

*DUNES*