



Adams and Ollman

Mariel Capanna: *Commonplace*

September 13–October 25, 2025

For inquiries:

Amy Adams
amy@adamsandollman.com
+1 215 426 4244

Andrea Glaser
aglaser@adamsandollman.com
+1 503 569 4050

Adams and Ollman is pleased to announce *Commonplace*, a solo exhibition by Philadelphia-based artist Mariel Capanna. Opening on Saturday, September 13, the exhibition explores limitations of memory, time and distance through a series of small-scale, speculative landscape paintings. *Commonplace* is on view through October 25, 2025, and is Capanna's third exhibition with the gallery.

For this new body of work, Capanna compiles and watches vintage 8mm home movies of family vacations and road trips anonymously uploaded to YouTube. Known for the time constraints that guide her painting process and determine her compositions, the artist watches these digitized reels and races to paint what she sees.

"I start each painting with no real sense of where it will land," said Capanna of her process. "My only expectation is that each painting will feel vaguely like a landscape. I guide the painting gently in that direction, allowing myself to stumble upon a horizon line, and then maintain it." Each painting is made with a distinct palette that she mixes ahead of time. "I glean these palettes from daily life," she explains. "One was gathered from an afternoon outside with [my son] Horace—t-shirt, shorts, helmet, scooter, sneakers, socks, grass, gravel. One was borrowed from an album cover; one is from a postcard that I received; a few are plucked from paintings that were on my mind."

Marked by dense accumulations of vibrant color, impasto paint and gestural marks, each work contains allusions to the images and notations that represent the iconography of the American road trip: streams, seas, fences, patches of grass, flowering bushes, sun hats, palm fronds, meadows, mountains, sand banks and birthday cakes. Within each canvas, shifting views glimpsed through multiple car windows and camera lenses are condensed into the picture plane, allowing the long road, seasonal changes, wide-ranging activities and encounters and myriad places to collapse into a single image.

The visual structure of each panel is dense with clunky, chunky marks extending to the edge. What we see is part of a continuum—only some of the picture. Past and present, here and there, presence and absence collapse into one cacophonous surface.

Mariel Capanna (b. 1988, Philadelphia, PA) received a BFA and Certificate of Fine Art from the Pennsylvania Academy of the Fine Arts, Philadelphia, PA, and an MFA from the Yale School of Art, New Haven, CT. She has been an artist in residence at the Guapamacátaro Art and Ecology Residency, Michoacan, MX; the Skowhegan School of Painting and Sculpture, Madison, ME; and the Tacony Library and Arts Building, Philadelphia, PA. Capanna is the recipient of the Robert Schoelkopf Memorial Traveling Fellowship and an Independence Foundation Visual Arts Fellowship. From 2021-2023, Capanna was the Mellon Post-MFA Fellow in Studio Art at Williams College, Williamstown, MA, and is currently a Visiting Assistant Professor of Art at Swarthmore College, Swarthmore, PA, and a Fresco Instructor at the Skowhegan School of Painting and Sculpture, Skowhegan, ME. Capanna's solo exhibition, *Giornata*, is currently on view at the Clark Institute, Williamstown, MA, and in 2026, Capanna will be the subject of a *MATRIX* exhibition at the Wadsworth Atheneum, Hartford, CT.

Mariel Capanna
Cat, Hat, Sailboat, Snow, 2025
oil on linen on panel
13h x 11w in
33.02h x 27.94w cm
MCapanna2025002





Detail: Mariel Capanna, *Cat, Hat, Sailboat, Snow*, 2025

Mariel Capanna
Footbridge, Palm Fronds, Tail Lights, Gate, 2025
oil on linen on panel
13h x 11w in
33.02h x 27.94w cm
MCapanna2025003





Detail: Mariel Capanna, *Footbridge, Palm Fronds, Tail Lights, Gate*, 2025

Mariel Capanna
Mountain, River, Fence, Tree, 2025
oil on linen on panel
13h x 11w in
33.02h x 27.94w cm
MCapanna2025004





Detail: Mariel Capanna, *Mountain, River, Fence, Tree*, 2025

Mariel Capanna
Awning, Railing, Truck, Palm, 2025
oil on linen on panel
13h x 11w in
33.02h x 27.94w cm
MCapanna2025005





Detail: Mariel Capanna, *Awning, Railing, Truck, Palm*, 2025

Mariel Capanna
River, One-Piece, Sandbank, Spruce, 2025
oil on linen on panel
13h x 11w in
33.02h x 27.94w cm
MCapanna2025006





Detail: Mariel Capanna, *River, One-Piece, Sandbank, Spruce*, 2025

Mariel Capanna
Brush, Fence, Duck, Knee, 2025
oil on linen on panel
13h x 11w in
33.02h x 27.94w cm
MCapanna2025007





Detail: Mariel Capanna, *Brush, Fence, Duck, Knee*, 2025

Mariel Capanna
Picnic Table, Box Truck, Tube Sock, Road, 2025
oil on linen on panel
13h x 11w in
33.02h x 27.94w cm
MCapanna2025009





Detail: Mariel Capanna, *Picnic Table, Box Truck, Tube Sock, Road*, 2025

Mariel Capanna
*Pickup Truck, Spruce Trees, Picket Fence,
Pond, 2025*
oil and marble dust on linen on panel
13h x 11w in
33.02h x 27.94w cm
MCapanna2025011





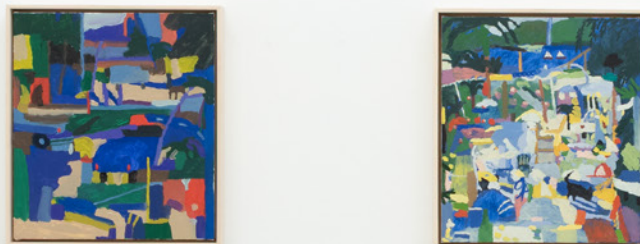
Detail: Mariel Capanna, *Pickup Truck, Spruce Trees, Picket Fence, Pond*, 2025

Mariel Capanna
Van, Horse, Shadow, Sand, 2025
oil on linen on panel
13h x 11w in
33.02h x 27.94w cm
MCapanna2025014





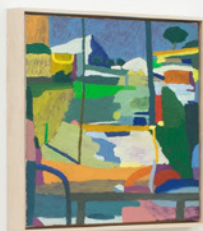
David Capanna, Van Horsa, Shadow, Sand, 2025



Installation view: Mariel Capanna, *Commonplace*, 2025



Installation view: Mariel Capanna, *Commonplace*, 2025



Installation view: Mariel Capanna, *Commonplace*, 2025



Installation view: Mariel Capanna, *Commonplace*, 2025



Installation view: Mariel Capanna, *Commonplace*, 2025



Installation view: Mariel Capanna, *Commonplace*, 2025



Installation view: Mariel Capanna, *Commonplace*, 2025



Installation view: Mariel Capanna, *Commonplace*, 2025



Installation view: Mariel Capanna, *Commonplace*, 2025



Installation view: Mariel Capanna, *Commonplace*, 2025

MARIEL CAPANNA

Born 1988, Philadelphia, PA

Lives and works in Swarthmore, PA

SELECT SOLO AND TWO PERSON EXHIBITIONS

- 2026 Wadsworth Atheneum Museum of Art, Hartford, CT (forthcoming)
- 2025 *Giornata*, The Clark Institute, Williamstown, MA
- 2022 *A Nice Gift for Friends and Relatives*, Adams and Ollman,
Portland, OR
- 2021 Good Weather, North Little Rock, AR
Overlook, Adams and Ollman, Portland, OR and Good Weather,
Salt Lake City, UT
- 2018 *Bone Dry* with Lucia Thomé, Marginal Utility, Philadelphia, PA
- 2017 *Little Stone*, Open Home, Good Weather, North Little Rock, AR
Mariel Capanna + Willie Wayne Smith, Central Park Gallery,
Los Angeles, CA
left, Gross McCleaf Gallery, Philadelphia, PA
- 2016 *Our Tacony* (Public Fresco), MuralArts, Philadelphia, PA
Mariel Capanna & HOODSisters at Rafa Esparza's Con/Safos,
Clockshop, Los Angeles, CA

SELECT GROUP EXHIBITIONS

- 2023 *I have done it again. / One year in every ten / I manage it—*,
Adams and Ollman, Portland, OR
- 2022 *We Feel Our Way Through When We Don't Know*, Battleboro
Museum and Art Center, Battleboro, VT
Elective Affinities, Chapter NY, New York, NY
Keeping Things Whole, North Loop Gallery, Williamstown, MA
Mountains at Collioure, 89 S. Main, White River Junction, VT
- 2020 *Eartha*, Adams and Ollman, Portland, OR

Shelter Is, ArtYard, Frenchtown, NJ

Counterparts and Doppelgangers, Cerulean Arts, Philadelphia, PA

ONLY WHEN YOU ARE CALLED, Yale Painting Thesis Show,

New Haven, CT

- 2019 *Hold On, Hold Me*, Charles Moffett, New York, NY
Power of 10, Steve Turner, Los Angeles, CA
- 2018 *Inside Out*, Steve Turner, Los Angeles, CA
The Unlikely Whole, ArtYard, Frenchtown, NJ
New Radicals, Cerulean Arts, Philadelphia, PA
Drift, PAFA Alumni Gallery, Philadelphia, PA
Person, Place or Thing with Center for Creative Works, UCAL,
Philadelphia, PA
- 2017 *Hello Girls!* with Material Girls organized by Alt Esc,
No Vacancy 3, Brooklyn, NY
Woodmere Annual Juried Exhibition, Woodmere Art Museum,
Philadelphia, PA
RAIR: Filthy Rich, The Galleries at Moore, Moore College of
Art & Design, Philadelphia, PA
- 2016 *noon*, Kamahira, Philadelphia, PA
A Body Has No Center, Tiger Strikes Asteroid, Philadelphia, PA
5 to Watch, Avery Galleries, Philadelphia, PA
fresh stART, Arena 1 Gallery, Santa Monica, CA
Shades, The Bedfellow's Club, Little Rock, AR
- 2015 *Gazing Inward*, COOP, Nashville, TN
Woodmere Annual Juried Exhibition, Woodmere Art Museum,
Philadelphia, PA
Richard Said, Fjord, Philadelphia, PA
Privacy Made Public, New Hope Arts Center, New Hope, PA
- 2014 *Should I Stay Or Should I Go?*, Gross McCleaf Gallery,
Philadelphia, PA

SELECT GRANTS AND AWARDS

- 2019 Robert Schoelkopf Memorial Travelling Fellowship
(Yale School of Art)
Katherine Beinecke Michel Scholarship (Yale School of Art)
- 2017 Foundation for Contemporary Arts Emergency Grant
- 2014 Independence Foundation Visual Arts Fellowship
- 2013 Kittredge Fund Artist Grant
Philadelphia Mayor's Award (PAFA)
Hobson-Pittman Award (PAFA)
- 2012 The Cresson Travel Scholarship (PAFA)
The Faculty Award (PAFA)

RESIDENCIES AND FELLOWSHIPS

- 2021–23 Mellon Post-MFA Fellow in Studio Art, Williams College,
Williamstown, MA
- 2019 Wordshapes, Curated Exhibition of Work by Artists from Center
for Creative Works, The Woodmere Art Museum,
Philadelphia, PA
- 2018 Visual Culture, Arts and Media Residency at Haverford College,
Haverford, PA
- 2017–18 Fresco Intensive, Skowhegan School of Painting and Sculpture,
Madison, ME
- 2017 “Allies in Art” Fellowship at the Center for Creative Works,
Wynwood, PA
- 2017 Little Stone, Open Home, Artist Talk and Discussion with Good
Weather Founder/Director Haynes Riley, The Clinton
School for Public Service, Little Rock, AR
- 2016 Guapamacátaro Art & Ecology Residency, Michoacán, Mexico

PUBLIC COLLECTIONS

Woodmere Art Museum

EDUCATION

- 2020 MFA, Yale School of Art, New Haven, CT, Painting
- 2017 Skowhegan School of Painting and Sculpture, Madison, ME
- 2016 The Mountain School of Arts (MSA^), Los Angeles, CA
- 2013 Certificate of Fine Arts, Pennsylvania Academy of the Fine Arts
(PAFA), Philadelphia, PA
- 2012 BFA, Pennsylvania Academy of the Fine Arts (PAFA),
Philadelphia, PA

TEACHING AND RELATED WORK

- 2023 Visiting Assistant Professor of Art, Swarthmore College,
Swarthmore, PA
- 2021 Mellon Post-MFA Fellow in Studio Art at Williams College,
Williamstown, MA
- 2020 Yale School of Art Teaching Assistant for “Basic Drawing”
- 2019 Yale School of Art Teaching Assistant for “Critical Practice”
Skowhegan School of Painting and Sculpture Fresco Shop
Associate Yale Norfolk School of Art Program
Coordinator
- 2016 RAIR (Recycled Artist in Residency) Development Associate /
Grant Writer (2016–17)
Tacony LAB (Library and Arts Building)/MuralArts Resident
Artist & Lead Muralist

CURATORIAL PROJECTS + ARTIST TALKS

- 2019 *Wordshapes* (Curated exhibition of drawings by artists from the
Center for Creative Works) The Woodmere Art Museum,
Philadelphia, PA

- 2017 *Little Stone, Open Home*, Artist Talk and Discussion with Good
Weather Director Haynes Riley The Clinton School for
Public Service, Little Rock, AR
- 2016 *Walls Talk Back*, Panel Discussion with Kaitlin Pomerantz
moderated by Paul Farber Little Berlin, Philadelphia, PA
- 2015 Artist Interview on *Articulate with Jim Cotter*, WHYY,
Philadelphia, PA
- 2014 Annual Cohen Arts Lecture, Germantown Friends School,
Philadelphia, PA