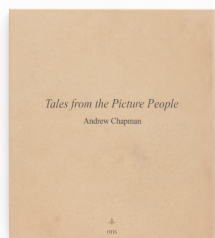


ANDREW CHAPMAN: TALES FROM THE PICTURE PEOPLE

OCTOBER 30 – DECEMBER 21, 2025

Opening Reception: October 30, 6–9pm



Self Published (Tales from the Picture People), 2025

Acrylic on artist's panel

18 × 16 × 1 inches

45.7 × 40.6 × 2.5 cm



Little Devil, 2025

Acrylic on artist's panel, cast plastic elements

70 × 60 ¾ × 1 ⅝ inches

177.8 × 154.3 × 4.1 cm



Lost Dog (for Justin), 2025

Acrylic on canvas over panel

24 × 21 ½ × 1 ⅝ inches

61 × 54.6 × 2.9 cm



The Primordial Reach, 2025

Acrylic on panel

24 × 21 ½ × 1 ⅝ inches

61 × 54.6 × 2.9 cm



End to End Top to Bottom (E2E, T2B), 2025

Acrylic on wood and Medex

12 ½ × 7 ½ × ¾ inches

31.8 × 19 × 1.9 cm



Erni, 2025

Acrylic, epoxy dough, cast plastic elements

10 ½ × 7 × 1 ¼ inches

27.9 × 24.1 × 2.5 cm



Barney (excerpts from past lives and other stories of adventures and misdeeds), 2025

Acrylic on Medex, cast plastic element

11 × 5 × 1 inches

27.9 × 12.7 × 2.5 cm



Electro Magnetic Image Recovery Systems (E.M.I.R.S.), 2025

Acrylic on panel

11 × 9 ½ × 7/8 inches

27.9 × 24.1 × 2.2 cm



Where the Wild Things Roamed (for Carol Anne), 2025

Acrylic on panel

9 × 5 × ½ inches

22.9 × 35.6 × 1.3 cm



Oil Cards and Attaché (Kodak Yellow), 2025

Acrylic on artist's panel

24 × 21 ½ × 1 ⅞ inches

61 × 54.6 × 2.9 cm



This Sacred Monster (B.U.G.), 2025

Acrylic on rag paper, mounted and matted in artist's Sapele wood frame

Sheet: 6 × 2 ¾ inches (15.2 × 7 cm)

Frame: 19 ¾ × 16 ⅞ × 1 ⅞ inches (50.2 × 41 × 2.9 cm)



The Darkest Hours of the Night (R.I.P. Stobe the Hobo), 2025

Acrylic on canvas over panel

48 × 41 × 1 ½ inches

121.9 × 104.1 × 3.8 cm



Landers (Acid Burn_V1), 2025

Acrylic on Medex with 3 brass and 1 black anodized hex screws

16 × 16 × 1 inches

40.6 × 40.6 × 2.5 cm

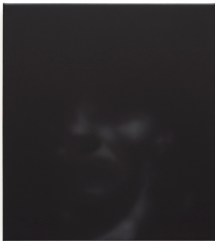


Landers (Blackout_V1), 2025

Acrylic on Medex with 3 brass and 1 black anodized hex screws

16 × 16 × 1 inches

40.6 × 40.6 × 2.5 cm



Shadow Man (Off Doyers), 2025

Acrylic on canvas over panel

18 × 16 × 1 inches

45.7 × 40.6 × 2.5 cm

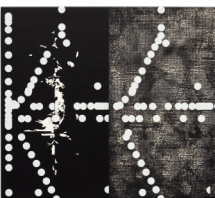


Oblong Render (Still Processing), 2025

Acrylic on panel

18 × 16 × 1 inches

45.7 × 40.6 × 2.5 cm



KK, 2025

Acrylic on artist's panel

16 × 18 × 1 inches

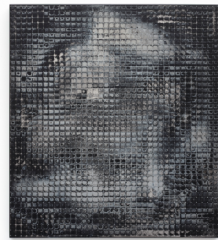
40.6 × 45.7 × 2.5 cm



Locust, 2025
Acrylic on canvas over panel
35 × 31 × 1 ¼ inches
88.9 × 78.7 × 3.2 cm



The Proverbial-Non-Verbal We, 2025
Acrylic on canvas over panel
24 × 21 ½ × 1 ⅛ inches
61 × 54.6 × 2.9 cm



Becoming as the Natural Order of Things, 2025
Acrylic on panel
24 × 21 ½ × 1 ⅛ inches
61 × 54.6 × 2.9 cm



Motion Capture for Invisible Performance, 2023
Oil, acrylic, paper, wood, hydrocal, hardware
48 × 41 × 1 ½ inches
121.9 × 104.1 × 3.8 cm



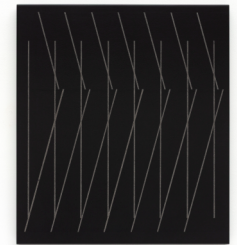
Embalmed Squid Lock, 2023
Oil, acrylic, paper, wood, hydrocal, hardware
48 × 41 × 1.50 inches
121.9 × 104.1 × 3.8 cm



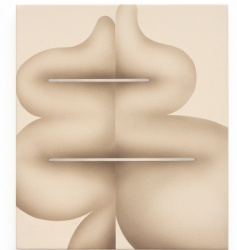
The Elephant's Foot (1986), 2025
Acrylic on panel
18 × 16 × 1 inches
45.7 × 40.6 × 2.5 cm



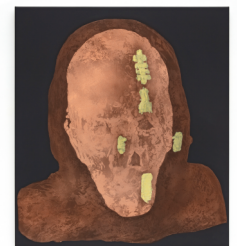
Solid State Logic, 2025
Acrylic on wood
 $\frac{5}{8} \times 9 \frac{1}{2} \times \frac{5}{8}$ inches
 $1.6 \times 24.1 \times 1.6$ cm



Stroboscopic Offering for the Single Dimension, 2025
Acrylic on panel
 $18 \times 16 \times 1$ inches
 $45.7 \times 40.6 \times 2.5$ cm



Leroy (original painting of what would become his seminal public work), 2025
Acrylic on panel
 $11 \times 9 \frac{1}{2} \times \frac{7}{8}$ inches
 $27.9 \times 24.1 \times 2.2$ cm



Mummy Scan, 2025
Acrylic on canvas over panel
 $35 \times 31 \times 1 \frac{1}{4}$ inches
 $88.9 \times 78.7 \times 3.2$ cm

Post Times

(646) 454-0552 | 29 Henry St. NY, NY 10002 | info@post-times.com