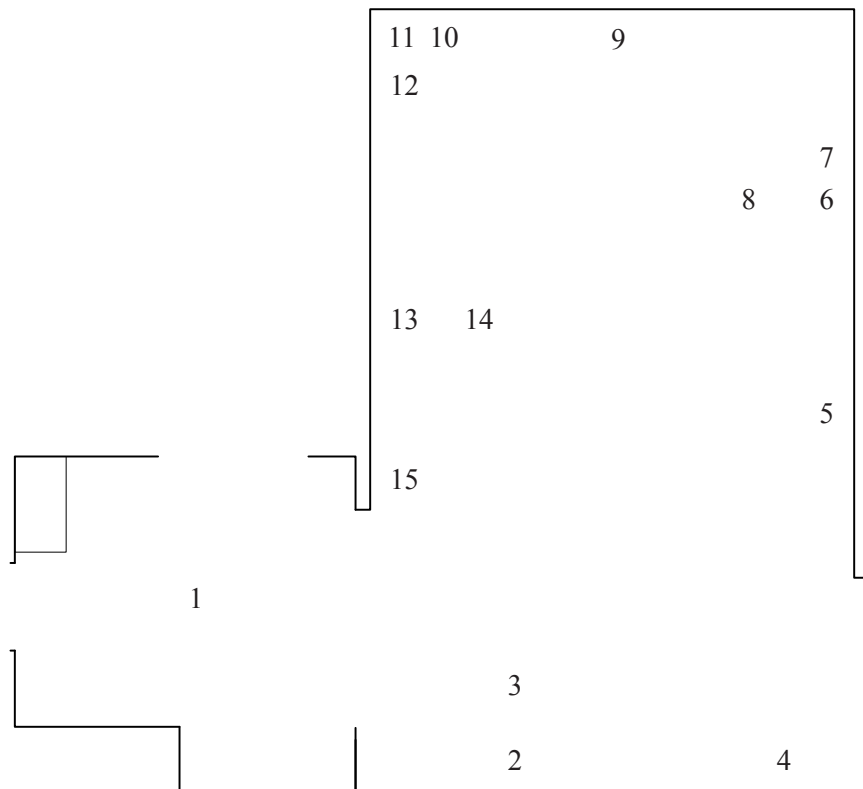


Gina Fischli
The Ballad of the Sad Cafè

December 5th 2025 - February 1st 2026

via Gasparotto 4
Milano

zaza'



1, *Can the phantom of life step in the same river twice*, 2025

Bronze, steel, iron
h140, Ø60cm

2, *Chandelier effect*, 2025

Digital C-print, oil on canvas
150x100cm

3, *Table Due*, 2025

Mdf, high pressure spray paint, varnish
h55cm, Ø51cm
Artist proof

4, *Midnight effect*, 2025

Digital C-print, acrylic on canvas
100x70cm

5, *Luminous effect*, 2025

Digital C-print, acrylic on canvas
70x100cm

6, *Gloss effect*, 2025

Digital C-print, oil on canvas
46x38cm

7, *Marble effect*, 2025

Digital C-Print, acrylic on canvas
70x50cm

8, *Table Uno*, 2025

Mdf, high pressure spray paint, varnish
h55cm, Ø51cm
Artist proof

9, *Steel effect*, 2025

Digital C-print, oil on canvas
120x120cm

10, *Light effect*, 2025

Digital C-print, oil on canvas
28x36cm

11, *Hopes & Dreams*, 2025

Oil on canvas
28x36cm

12, *Moss effect*, 2025

Digital C-print, oil on canvas
38x46cm

13, *Safety effect*, 2025

Digital C-print, acrylic on plastic wrapping, canvas
160x100cm

14, *Table Tre*, 2025

Mdf, high pressure spray paint, varnish
h55cm, Ø51cm
Artist proof

15, *Legacy effect*, 2025

Digital C-print, oil on canvas
38x46 cm