

An abstract painting with a textured, expressive style. The background is a mix of warm and cool tones, including yellows, oranges, and reds, with cooler blues and purples in the lower half. The brushstrokes are visible and varied in direction, creating a sense of movement and depth. The overall effect is a vibrant, layered composition.

Matt Lifson  
*Corner Time*

November 21, 2025–  
January 17, 2026

NOON Projects  
951 Chung King Road  
Los Angeles, CA 90012

Thursday to Saturday  
Noon–5pm  
And by Appointment

+ 1 971 341 6648  
[noon-projects.com](http://noon-projects.com)  
[info@noon-projects.com](mailto:info@noon-projects.com)

NOON



**Matt Lifson**  
***Corner Time***

**November 21, 2025–  
January 17, 2026**

Opening Reception  
November 21, 2025  
6–9 PM

NOON Projects is honored to present *Corner Time*, a solo exhibition of new paintings by Matt Lifson. Through careful engagement with the canon of narrative painting—particularly the social realists of the early 20th century—*Corner Time* presents a series of intimate portraits that reflect the social temperature and malaise of the present moment.

Lifson's third exhibition with the gallery centers on his queer community in Los Angeles. His portraits capture friends he's met over the past fifteen years, tracing the intimacy and trust that form his circle and revealing the shared tenderness at the heart of queer connection.

*Corner Time* also marks a significant development in Lifson's painting practice and approach to exhibition-making. Whereas earlier bodies of work began with a preconceived concept and drew from screen-based media—horror films, vintage pornography, and digitally manipulated imagery—this series emerged quietly and organically. Lifson chose to create one painting at a time, working on an easel on smaller canvases in closer dialogue with the body. The source material for these works originated in one-on-one sessions between the artist and his subjects.

Looking to artists such as Vermeer, Cadmus, Wyeth, and Neel—with particular emphasis on Edward Hopper, Grant Wood, and the Social Realist painters who illuminated working-class life, Lifson draws on this lineage to frame the present. His portraits depict queer people at home, surrounded by the familiar objects of contemporary life: flat-pack furniture, safety-pin earrings, houseplants, trinkets, and souvenirs. Within these domestic spaces, he positions his subjects in the corner—a charged site historically associated with discipline, marginalization, and entrapment.

The resulting paintings capture unedited, candid moments within domestic spaces: a figure hunched over a lava lamp in a dimly lit room; a hazy Sunday morning in bed; a lover caught getting dressed through an open bathroom door. Lifson's gaze peers behind the curtain of his subjects' lives in a way that feels more ethnographic than voyeuristic. In doing so, he performs what artists have always been called to do: to look both within and without, observing, focusing, and faithfully depicting what he sees.

Unlike Vermeer's portraits of the middle class, Lifson's paintings focus on a queer class, rendered in the tones and textures of the current moment. Lifson resists inflated optimism, instead offering an unembellished record of contemporary life. *Corner Time* punctuates the here and now without offering answers—instead offering an observation, dimly lit, in the corner, grounded in honesty.

## Biography

### Matt Lifson



Matt Lifson (born 1985) is a painter whose work explores queer identity through intimate and often confrontational scenes. Drawing on the history of portraiture and narrative painting, Lifson engages with both lived experience and cultural imagery, frequently drawing on references from media such as horror films and vintage pornography, to examine the complexities and darker sides of queer life. His practice combines direct observation with layered composition, creating paintings that are both immediate and reflective, rich in symbolism and metaphor, balancing intimacy with broader social commentary.

Lifson earned a BFA from the School of Visual Arts, New York, and an MFA from Otis College of Art & Design. His work has been shown for over fifteen years, including solo exhibitions at NOON Projects, ACME, and Angles Gallery (Los Angeles). Internationally, his work has been presented at the Material Art Fair in Mexico City, as well as in exhibitions in London, Paris, Berlin, the Netherlands, and Turkey. Lifson was born in New York and lives and works in Los Angeles.









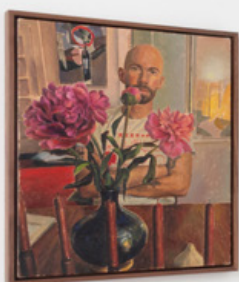




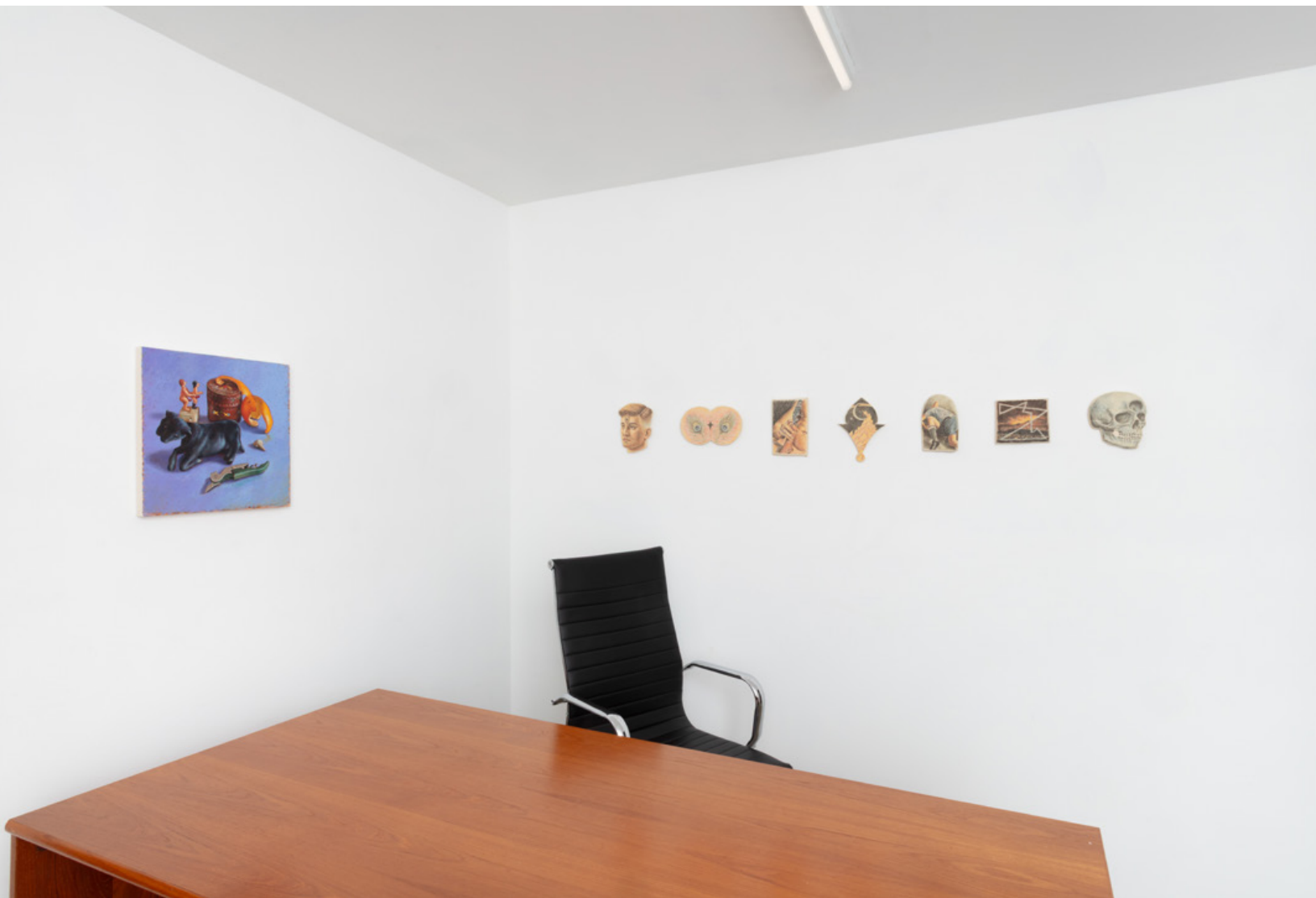














Matt Lifson

*Angel*, 2025  
Oil on canvas  
26 x 38 in. | 66 x 96.5 cm

NOON





NOON





Matt Lifson

*After hours*, 2025

Oil on canvas

21 x 28 in. | 53.3 x 71.1 cm

Framed: 22 1/2 x 29 3/8 in.

NOON





NOON





Matt Lifson

*Corner time*, 2025

Oil on canvas

24 x 18 in. | 61 x 45.7 cm

Framed: 24 1/4 x 19 3/8 in.

NOON









Matt Lifson

*Distance measured*, 2025

Oil on canvas

24 x 18 in. | 61 x 45.7 cm

Framed: 24 1/4 x 19 3/8 in.

NOON





NOON





Matt Lifson

*Arcadia and Cyrus*, 2025  
Oil on canvas  
24 x 18 in. | 61 x 45.7 cm

NOON





NOON





Matt Lifson

*Brian with peonies and garlic, 2025*

Oil on canvas

20 x 16 in. | 50.8 x 40.6 cm

Framed: 21 1/4 x 17 3/8 in.

NOON





NOON





Matt Lifson

*How much would you endure for me?*, 2025

Oil on canvas

20 x 16 in. | 50.8 x 40.6 cm

Framed: 21 1/4 x 17 3/8 in.

NOON









Matt Lifson

*Morning after, 2025*

Oil on canvas

20 x 16 in. | 50.8 x 40.6 cm

NOON





NOON





Matt Lifson

*A pace that gave the pain time to bloom, 2025*

Oil on canvas

16 x 12 in. | 40.6 x 30.5 cm

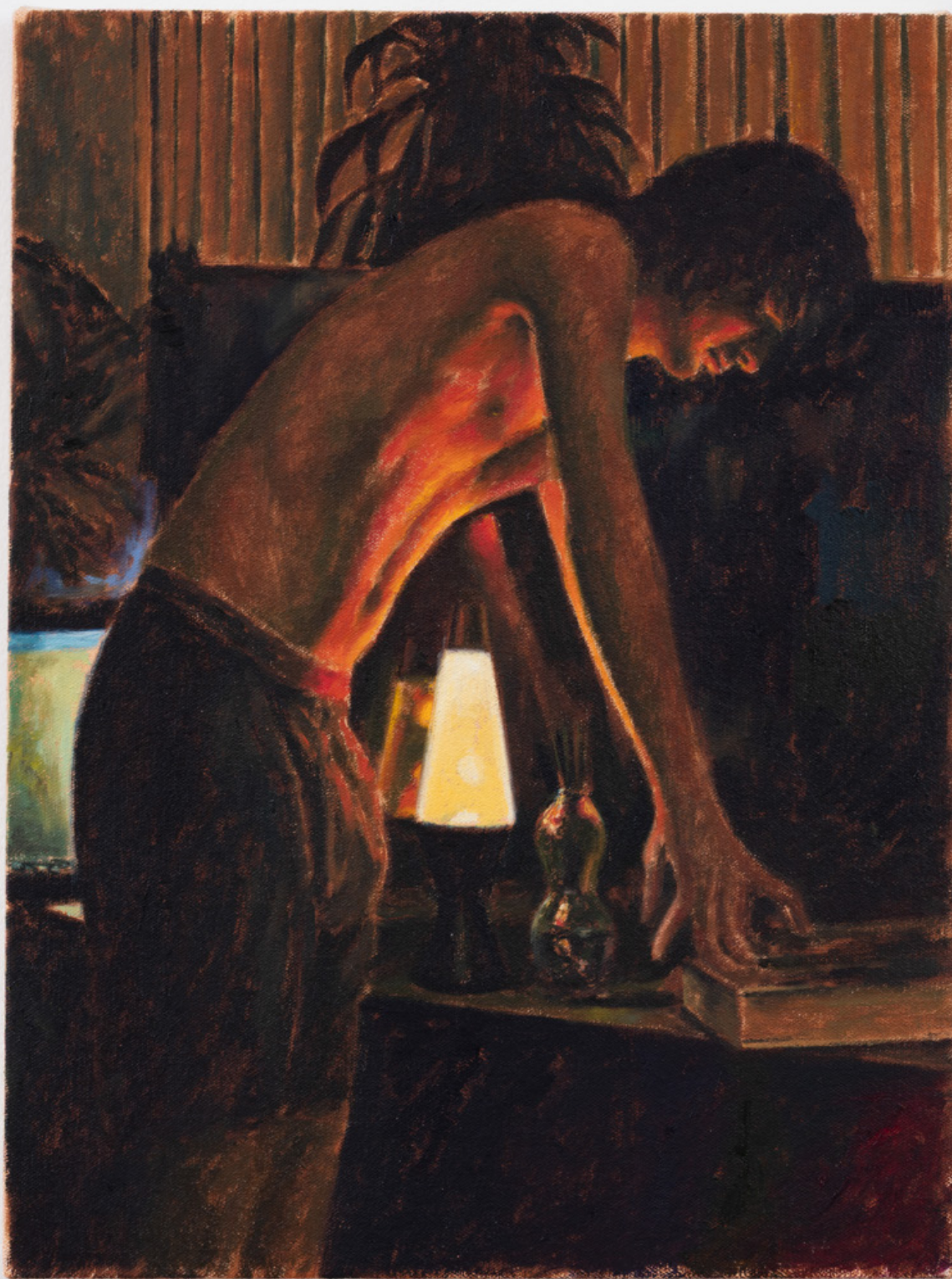
Framed: 17 1/4 x 13 1/4 in.

NOON









Matt Lifson

*Changing shapes slowly*, 2025  
Oil on canvas  
16 x 12 in. | 40.6 x 30.5 cm

NOON





Matt Lifson

*Still life with orange peel*, 2025  
Oil on canvas  
16 x 16 in. | 40.6 x 40.6 cm

NOON











**Matt Lifson**

*Boy on dock*  
2025

Underglaze colored  
pencil on ceramic

7 1/4 x 4 1/4 in.  
18.4 x 10.8 cm



**Matt Lifson**

*Bruises*  
2025

Underglaze colored  
pencil on ceramic

5 3/4 x 9 1/2 in.  
14.6 x 24.1 cm



**Matt Lifson**

*Hazel waiting*  
2025

Underglaze colored  
pencil on ceramic

8 x 4 3/4 in.  
20.3 x 12.1 cm



**Matt Lifson**

*Sound in flight*  
2025

Underglaze colored  
pencil on ceramic

8 x 5 in.  
20.3 x 12.7 cm



**Matt Lifson**

*Third eye*  
2025

Underglaze colored  
pencil on ceramic

7 1/2 x 6 in.  
19.1 x 15.2 cm



**Matt Lifson**

*North star*  
2025

Underglaze colored  
pencil on ceramic

8 3/4 x 6 1/2 in.  
22.2 x 16.5 cm





**Matt Lifson**

*Bad boys*  
2025

Underglaze colored  
pencil on ceramic

7 1/2 x 4 1/2 in.  
18.7 x 11.4 cm

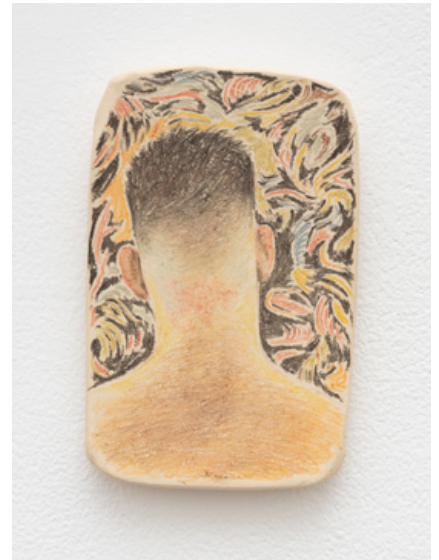


**Matt Lifson**

*David*  
2025

Underglaze colored  
pencil on ceramic

5 1/4 x 3 1/4 in.  
13.3 x 8.3 cm



**Matt Lifson**

*Eaton fires*  
2025

Underglaze colored  
pencil on ceramic

5 1/2 x 6 in.  
14 x 15.2 cm



**Matt Lifson**

*Death*  
2025

Underglaze colored  
pencil on ceramic

6 3/4 x 5 1/2 in.  
17.1 x 14 cm





**CV**  
**Matt Lifson**

Born 1985 in New York, NY  
Lives and works in Los Angeles, California

**Education**

MFA, Otis College of Art & Design, Los Angeles, CA

BFA, School of Visual Arts, New York, NY

**Solo Exhibitions**

2025 *Corner Time*, NOON Projects, Los Angeles, CA

2023 *Love Solver*, NOON Projects, Los Angeles, CA

2022 *Fade In*, NOON Projects, Los Angeles, CA

2018 *How is your fever?*, CB1 Gallery, Los Angeles, CA

2016 *Part 2*, ACME, Los Angeles, CA

2015 *The Snakes, That Remain*, ACME, Los Angeles, CA

2013 *Hidden Tracks*, Angles Gallery, Los Angeles, CA

2012 *Smoke and Mirrors*, Bolsky Gallery, Los Angeles, CA

2010 *Wanderlust*, Ursa Minor Gallery, Seattle, WA

**Group Exhibitions**

2025 *Queer Perspectives*, Michael Warren Contemporary, Denver, CO

2024 *A Line to You*, NOON Projects, Los Angeles, CA

2023 *Room With A View*, Vardan Gallery, Los Angeles, CA

*California Sober*, The Floating Gallery, Los Angeles, CA

2022 *Group Show*, Eve Leibe Gallery, London, UK

2021 *Funhouse*, RDFA, Los Angeles, CA

2020 *Heaven and Hell*, Tom of Finland Foundation, Los Angeles, CA

*2 DAY SHOW*, LSH CoLab, Los Angeles, CA

2019 *Wanderers*, Tile Blush, Miami, FL

*Flat Earth Society*, Big Pictures LA, Los Angeles, CA

2018 *The Therapist's Office*, 1969 Gallery, New York, NY

2017 *Hot Time, Summer in The City*, CB1 Gallery, Los Angeles, CA

2016 *Whatever Forever*, C.A.M Gallery, Istanbul, TR



## Group Exhibitions

- 2015 *Queertopia. It Takes A Village*, Galerie Kornfeld, Berlin, DE
- 2015 *And There Is An End*, Roberts & Tilton, Los Angeles, CA  
*Bloody Red Sun of Fantastic LA*, PIASA, Paris, FR
- And There Is An End 2*, James Harris Gallery, Seattle, WA
- 2014 *Person Place or Thing*, 68 Projects, Berlin, DE
- Art Los Angeles Contemporary*, Angles Gallery, Los Angeles
- Summer Show*, Angles Gallery, Los Angeles, CA
- 2013 *Art Platform Los Angeles*, Angles Gallery, Los Angeles, CA
- 5 New Artists On The Map*, California Heritage Museum, Los Angeles, CA
- New, Now Next...*, Angles Gallery, Los Angeles, CA
- Sublimated*, Boston Court Performing Arts Center, Pasadena
- The Dorian Project*, Ana Christea Gallery, New York, NY
- 2012 *It Ain't Over Yet*, K.O.P. Gallery, Breda, NL
- Yes, and...*, Bolsky Gallery, Los Angeles, CA
- Imagine*, C.A.M. Gallery, Istanbul TR
- 2011 *Contemporary Art Fair*, C.A.M Gallery, Istanbul TR
- Ego Busters*, C.A.M. Gallery, Istanbul TR
- GLAMFA*, CSU Long Beach, Long Beach, CA
- 2010 *The Art That Dare Not Speak Its Name*, CB1 Gallery, Los Angeles, CA
- Troll*, Envoy Enterprises, New York, NY
- Figurative Deployment, 2010*, Vera Project, Seattle, WA
- 2009 *Rose Garden Benefit*, C.A.M. Gallery, Istanbul, TR
- 2008 *FRESH*, C.A.M Gallery, Istanbul, TR
- 2007 *Summer Show*, Yale University, Norfolk, CT
- Prime Time*, School of Visual Arts, New York, NY
- Body Modification*, School of Visual Arts, New York, NY
- Portraits Reconsidered*, School of Visual Arts, New York, NY